



2012
JOBESPORTS.COM



JOBESPORTS FUSION OF FUN CATALOGUE



JOBESPORTS.COM



04 WETSUITS LADIES



10 WETSUITS MEN



20 VESTS MEN



26 IMPACT SHIELDS



33 PWC GEAR



43 BOARDSHORTS YOUTH



80 BINDINGS

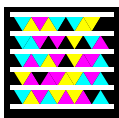


00 KNEEBOARDS



95 SLALOM SKIS

TAGS



Next to many products a tag is shown. By scanning this tag you will be able to view exclusive product images and get extra information about the item. How does this work? Download the tag app on:

WWW.GETTAG.MOBI

and scan the tag with your mobile!

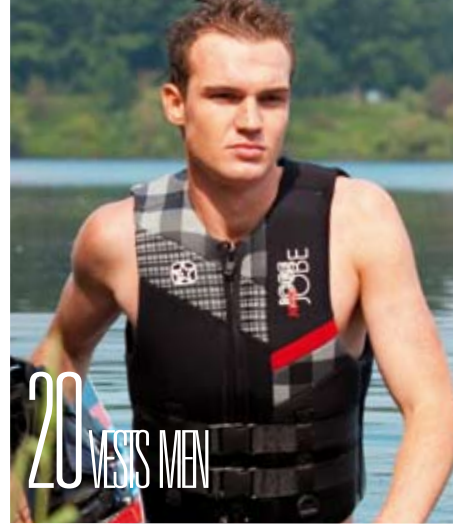
All product specifications and prices are subject to change without notice. 2012 Sport & Recreatie Den Bol B.V. all rights reserved. © The colours of the original products might vary slightly from the displayed products due the printing process.

Jobe Sports International is the trade name of the company Sport en Recreatie Den Bol B.V. All our offers, order confirmations and contracts of sale are governed by the general terms and conditions of delivery of Sport en Recreatie Den Bol B.V., as filed with the Chamber of Commerce for Rivierenland in Tiel under trade register number 11033564

Special thanks to:

Linda van den Broek photographer, Chris Garrison photographer, Sebastian Cans photographer, Dom Romney photographer, Max Models, all amateur models, Cable Waterski & Wakeboards Center Brabant, Waterskicentrum Splash, McCormicks cable park, OWC Cable Park, Pat Panakos, Matt Rualerson, Bootdrivers Aart van der Werf and Wim van den Oord, Waterskischool De Uitvliet, Boat Evasion Sarl, ToDo translation company, Jachthaven 't Leuken, Valckx Watersport, Chris Streiter, Loes de Haan and all the athletes of the Jobe Team

Jobe Team	002 - 003	
Wetsuits		
Men	010 - 016	
Ladies	004 - 009	
Youth	040 - 042	
(Semi) Drysuits	018 - 019	
Barefoot Suit	017	
Vests		
Men	020 - 025	
Ladies	028 - 029	
Youth	044 - 045	
Unisex	030 - 031	
Impact Shields	026 - 027	
PWC Gear		
PWC Team	032	
Wetsuits	033 - 035	
Vests, jackets & pants	036 - 037	
Accessories	038 - 039	
Boardshorts		
Men	050 - 053	
Ladies	054 - 055	
Youth	043	
Rash Guards		
Men	046 - 047	
Ladies	048 - 049	
Youth	042 - 043	
Casual Wear		
Men	056 - 058	
Ladies	059	
Youth	060	
Accessories	061	
Wakeboards		
Wakeboard Team	062 - 063	
Men	064 - 073	
Ladies	074 - 075	
Packages	076 - 079	
Bindings	080 - 086	
Wakeskates		087
Kneeboards		088 - 089
Combo Skis		
(Shaped) Combo Skis	090 - 091	
Combo Ski Packages	092	
Combo Skis Youth	093	
Slalom Skis		
Slalom Team	094	
Slalom Skis	095 - 098	
Slalom Bindings	100 - 101	
Wakeskis		099
Ropes & Handles		102 - 106
Gloves		107
Protective Gear		108 - 109
Bags		110 - 111
Boat Accessories		
Towers & Accessories	112 - 115	
Boom & Poles	116	
Sacks & Accessories	117	
Towables		
Towables	118 - 138	
Towables Youth	139	
Trampolines	139	
Watersleds	140 - 141	
Extras		142 - 143
Size Charts & Specifications		144 - 145



20 VESTS MEN



74 WAKEBOARDS LADIES



118 TOWABLES



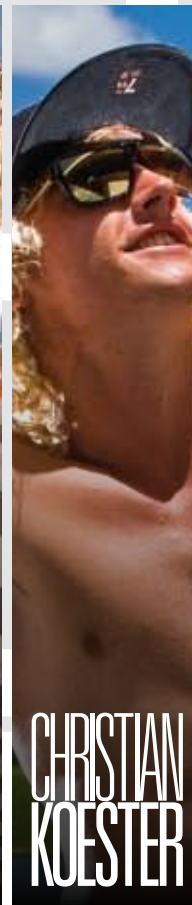
INDEX 2012

JOBE TEAM

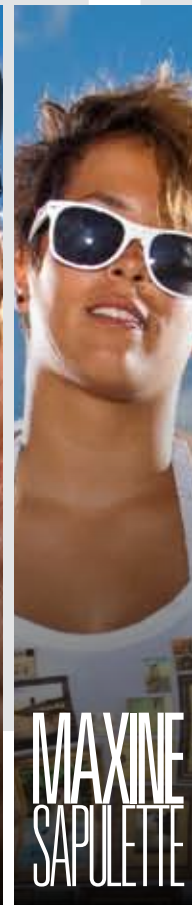
WAKEBOARDTEAM



AUSTIN
HAIR



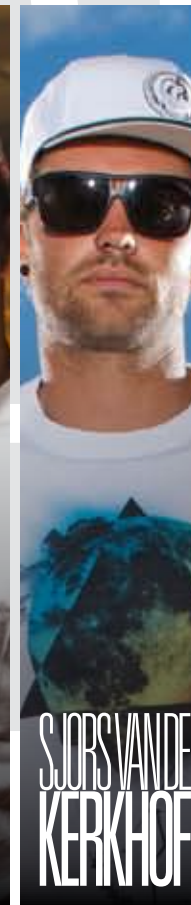
CHRISTIAN
KOESTER



MAXINE
SAPULETTE



DECLAN
CLIFFORD



SJOORS VAN DE
KERKHOF



KIRSTEEN
MITCHELL

What's your best achievement ever?	4th 2010 US Pro Tour 2011 US National Champ World Wakeskate Champ	3 times British Champion	World Champion 2008 Open WWA World Champion 2010	1st British Nationals 2011 3rd World Championships 2010 2nd European Championships 2010	1st Jagermeister Wake Riderz 2009	2010 Ladies World Cable Wakeboard Champion
What's your favourite Jobe product (2012)?	Jobe Austin Series	Jobe CliCK Series	Jobe Max Series	Jobe Austin Series	Jobe Vanity 141 & Guerilla 142	Click Bindings & Austin Board
What's your favourite water sports spot?	East Crooked Lake, Florida	JBSki	Down Under Nieuwegein	Box End Park	Down Under Nieuwegein	JBSki
What's your favourite movie?	Step Brothers	Drive	Taken	Inbetweeners	Snatch	How to Train Your Dragon
What's your favourite song?	Dean & Ravo - Walking Around	Wiz Khalifa - Black and Yellow	Pink - Who Knew	Drake - I'm On One	Lynard Skynard - Simple Man	Chris Brown - Yeah
What's your favourite book?	Rich Dad Poor Dad	Unleashed Wake Mag	Dont read books. Haha!	Wakepress	Pimp	Matthew Reilly - Hover Car Racer
What's your favourite food?	Sushi	Chinese	Corn and noodlesoup	Sweets	Thai!!!	Chocolate
Who is the most influential person in your life?	So many I can't count	DAD	My mom was, my sister Rachel Friend/coach Sjoors vd Kerkhof	My Mum	Daan Rigter. He's showing me how to get waisted every party	My Boyfriend
What's the last app that you've downloaded for your phone?	Southwest Airlines	Viber	Whatsapp	Tiny Wings	Mpora video app	Tiny Wings
What's your favourite day in the week?	Monday, its the most relaxing day after a contest	Friday	Saturday because we ride all day and then party at night!	The last day of work	Monday morning. Love it to get back to work all the time (not!)	Any day its sunny
How many times did you saw "The Titanic"?	4 times	Twice	Too many times, epic movie!	Just once, I ran out of tissues	Once	Once
Who is your favourite super hero?	Batman	Superman	Catwoman	Burn't face Man (LOL)	Superman	Dash from the Incredibles
What is your favourite "made in China" product?	American flags	Jobe CliCK Series	My wakeboard	iPhone	My boards ;)	iPhone
What was the most embarrassing nickname your parents gave you?	Goose	CK	Just Max	Granddad called me "Declan Dan the Frying Pan Man"	My dad calls me Sjaakie ouwe rukker. Learn Dutch	Shorty

SLALOMTEAM



**GUILLAUME
DUVERNOY**

7th at the World Championships 2009

Rogue Slalomski
Baurech close to Bordeaux
Dikenek
Will Smith - Welcome to Miami
None
Asian food
My parents

Air France app
Saturday

Three times
Iron Man
My running shoes
Guigui



**NANCY
CHARDIN**

Under 21 jump World Champion 2007 and 2009

Spiral Impact Shield Silver
Cory Pickos ski school in Florida
Million Dollar Baby
Cataracts - Top of the World
Algebra for dummies
Sushi
My dad

Yoga application
Saturday

I stopped counting long time ago
Once
Wolverine
Iron Man
My fake sunglasses
iPhone 4
Louloute
Boji



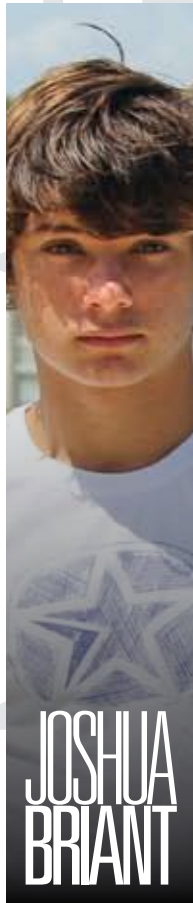
**BOJAN
SCHIPNER**

2010 Under 21 European Jump Champion 66.9m

Jobe Rogue slalomski
Franz Oberleitner Training Center
Die Hard 4
Lil' Wayne - She will
Ralph Krueger - Teamlife
Beefburger
My mum

SoundCloud
Friday

Never
Iron Man
Electric Guitar
Smoo



**JOSHUA
BRIANT**

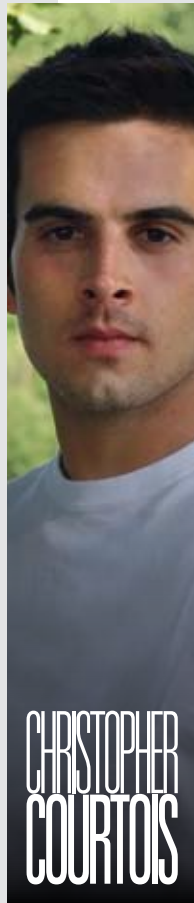
Silver Medal Overall Junior Worlds 2010

Jobe Rogue slalomski
Jack Travers Sunset Lakes Florida
300
Red Hot Chili Peppers - Can't Stop
A Wise Man's Fear by Patrick Rothfuss
Mexican
Dad

Zombie Cafe
Saturday

Never
Iron Man
Electric Guitar
Smoo

PWCTEAM



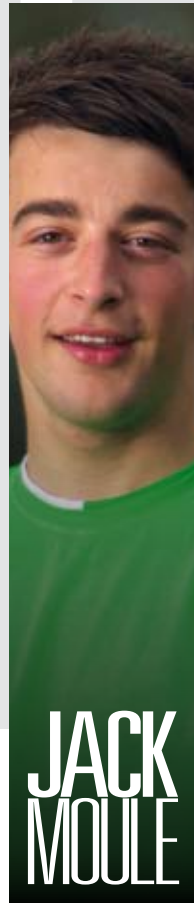
**CHRISTOPHER
COURTOIS**

European Champion 2006, 2nd European Champion '08 & '09, 3rd World Champ Aquabike UIM '10

Long John Jacket DLX
The Issoire Nautique Lake
Rocky IV
I like all kinds of DJ's
None
Japanese food
My parents and my girlfriend

Allo Ciné
Saturday

Three times
"Superman" as Clark Kent
iPhone
Douny



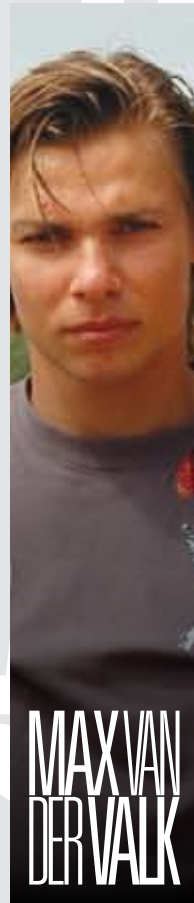
**JACK
MOULE**

3x British Jetski Freestyle Champion Ranked 2nd in The Worlds

Vision Impact Shield
Lake Havasu USA
The Hangover
Nero - Promises
None
Fish and Chips
My Parents and Travis Pastrana

None, got a Blackberry!
Friday

Never seen
Superman
My iPod
Little man!



**MAX VAN
DER VALK**

4th European Tour Ski GP 2011

Suction Gloves
Maurik, The Netherlands
Snatch
Goldfish
Haar naam was Sarah
Chateau briand (medium)
My Dad

Motorcross match up
Saturday

Once
Spiderman
Electric scooter
Poepje

BAREFOOT



**MATHIJS
ZIELMAN**

8x Jr Dutch Champ, 4x Open Dutch Champ, 2nd overall in European Champs, 5th overall in World Champs

Barefoot Suit
The Blackwater in Hasselt
The Hangover
Mann ft. 50 Cent - Buzzin'
Car Engineering & Mechanics books
A big t-bone steak
Of course my parents

Whatsapp
Every day, when I can ski

No Titanic for me
Scooby Doo
Samsung Galaxy S2 phone
They always call me Mathijs



WET SUITS LADIES



01.

01. Shorty Delight

Color: Blue, Pink - Size: XS, S, M, L, XL, XXL
 • 2.5 mm water repellent mesh chest and back • 2.0 mm neoprene arms and legs • Thermo lining in chest and back panels for additional warmth • 100% super stretch fabric • A-class neoprene for extra comfort • "Liquid tape" seals to keep water out • Comfortable ultra stretch collar • Flat stitch seam construction • Seamless armpits • This suit is a perfect match with the Delight Side Entry Vest (see page 29)
 Blue: 300512004 - Pink: 301412002

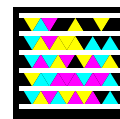
02. Full Suit Delight

Color: Blue, Pink - Size Blue: XS, S, M, L, XL - Size Pink: XS, S, M, L, XL, XXL
 • 3.0 mm water repellent mesh chest and back panels • 2.5 mm neoprene arms and legs • Thermo lining in chest and back panels for additional warmth • 100% super stretch fabric • A-class neoprene for extra comfort • "Liquid tape" seals to keep water out • Comfortable ultra stretch collar • Protective kneepads • Flat stitch seam construction • Seamless armpits • This suit is a perfect match with the Delight Side Entry Vest (see page 29)
 Blue: 300512005 - Pink: 301412003

Size chart on page 144-145



02.





01.

01. Shorty Indy

Color: Blue, Purple - Size: XS, S, M, L, XL

- 2.5 mm water repellent mesh chest and back panels
 - 2.0 mm neoprene arms and legs
 - Comfortable "Glide skin" collar
 - "Glide skin" seals to keep water out
 - Super stretch panels on flex areas
 - Flat stitch seam construction
 - Seamless armpits
 - This suit is a perfect match with the Indy vest (see page 29)
- Blue: 300511003 - Purple: 301411001



02.

02. Full Suit Indy

Color: Blue, Purple - Size: XS, S, M, L, XL

- 3.0 mm water repellent mesh chest and back panels
 - 2.5 mm neoprene arms and legs
 - Comfortable "Glide skin" collar
 - "Glide skin" seals to keep water out
 - Super stretch panels on flex areas
 - Flat stitch seam construction
 - Protective kneepads
 - Seamless armpits
 - This suit is a perfect match with the Indy vest (see page 29)
- Blue: 300511004 - Purple: 301411002

Size chart on page 144-145









01. Shorty Pure

Size: XS, S, M, L, XL

- Sleeveless ladies suit with 1/4 leg length for warmer days • 2.0 mm neoprene shorty
 - Flat stitch seam construction • This suit is a perfect match with the Pure vest Pink (see page 29)
- 300012005

02. Shorty Essence

Size: XS, S, M, L, XL

- 2.5 mm water repellent mesh chest and back panels • 2.0 mm neoprene arms and legs
 - Flat stitch seam construction • Seamless armpits • This suit is a perfect match with the Essence vest (see page 29)
- 300812003

03. Full Suit Essence

Size: XS, S, M, L, XL

- 3.0 mm water repellent mesh chest and back panels • 2.5 mm neoprene arms and legs
 - Flat stitch seam construction • Protective kneepads • Seamless armpits • This suit is a perfect match with the Essence vest (see page 29)
- 300812004

Size chart on page 144-145



WET SUITS MEN



01.

01. Shorty Viper

Color: Blue, Black - Size: S, M, L, XL, XXL

- 2.5 mm water repellent mesh body and back panels • 2.0 mm neoprene legs and arms
- Thermo lining in chest and back panels for additional warmth • 100% super stretch fabric
- A-class neoprene for extra comfort • "Liquid tape" seals to keep water out
- Double layer collar design with "Glide skin" seal for extra comfort • Flat stitch seam construction • Seamless armpits • This suit is a perfect match with the Viper vest (see page 20)

Blue: 300012001 - Black: 300811007

Size chart on page 144-145



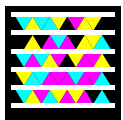
02.

02. Full Suit Viper

Color: Blue, Black - Size: S, M, L, XL, XXL

- 3.0 mm water repellent mesh body and back panels
- 2.5 mm neoprene legs and arms
- Thermo lining in chest and back panels for additional warmth
- 100% super stretch fabric
- A-class neoprene for extra comfort
- "Liquid tape" seals to keep water out
- Double layer collar design with "Glide skin" seal for extra comfort
- Flat stitch seam construction
- Protective kneepads
- Seamless armpits
- This suit is a perfect match with the Viper vest (see page 20)

Blue: 300012002 - Black: 300811008





01.



02.

01. Shorty Alpha

Size: S, M, L, XL

- Special design with long arms and short legs • 2.5 mm mesh chest and back panels • 2.0 mm neoprene legs and arms • Chest zip construction for ultimate flexibility • 100% super stretch fabric • A-class neoprene for extra comfort • Water repellent mesh panels • Glued and blind stitched seams to keep you warm • Double liquid tape seals on the sleeves and rolled seals in the legs to keep water out • Sublimated arm print • This suit is a perfect match with the Alpha Impact Shield Blue (see page 26) 300512001

02. Shorty Vision

Size: S, M, L, XL

- Special design with long arms and short legs • 2.5 mm mesh chest and back with thermo lining for additional warmth • 2.0 mm neoprene legs and arms • 100% super stretch fabric • A-class neoprene for extra comfort • Water repellent mesh panels • Glued and blind stitched seams to keep the water out and keep you warm • Liquid tape seals on the sleeves and rolled seals in the legs • This suit is a perfect match with the Vision Impact Shield (see page 26) 300810003



03.



04.

03. Shorty Quest

Color: Lime, Black - Size: S, M, L, XL, XXL

- 2.5 mm water repellent mesh body and back panels
- 2.0 mm neoprene arms and legs
- Super stretch panels on flex areas
- Comfortable "Glide skin" collar
- "Glide skin" seals to keep water out
- Flat stitch seam construction
- Seamless armpits
- This suit is a perfect match with the Treasure vest (see page 23)

Lime: 301111001 - Black: 300811002

04. Full Suit Quest

Color: Lime, Black - Size: S, M, L, XL, XXL

- 3.0 mm water repellent mesh body and back panels
- 2.5 mm neoprene arms and legs
- Super stretch panels on flex areas
- Comfortable "Glide skin" collar
- "Glide skin" seals to keep water out
- Flat stitch seam construction
- Protective kneepads
- Seamless armpits
- This suit is a perfect match with the Treasure vest (see page 23)

Lime: 301111002 - Black: 300811003

Size chart on page 144-145





01.



02.

01. Neo Short Lace

Size: XS, S, M, L, XL, XXL, XXXL

- 2.0 mm neoprene short with lace adjustment
- Super stretch panels in the crotch and at the side of the leg
- Non-slip elastic legs
- Flat stitch seam construction
- Low waist fit

300808018

02. Neo Short

Color: Red, Blue, Black - Size: XS, S, M, L, XL, XXL

- 2.0 mm neoprene short with buckle closing
- Double nylon fabric for extra strength
- Super stretch panels in the crotch
- Rolled seals to keep the water out
- Flat stitch seam construction

Red: 300410001 - Blue: 300510001 - Black: 300810004





03.

03. Shorty Extra

Color: Blue, Red, Yellow - Size: XS, S, M, L, XL, XXL, XXXL

- 2.5 mm water repellent mesh body and back panels
- 2.0 mm neoprene arms and legs
- Comfortable "Glide skin" collar
- "Glide skin" seals to keep water out
- Seamless armpits
- Embossed chest logo
- This suit is a perfect match with the Combat vest (see page 24)

Blue: 300511002 - Red: 300411002 - Yellow: 300211002

04. Full Suit Extra

Color: Blue, Red, Yellow - Size: XS, S, M, L, XL, XXL, XXXL

- 3.0 mm water repellent mesh body and back panels
- 2.5 mm neoprene arms and legs
- Comfortable "Glide skin" collar
- "Glide skin" seals to keep water out
- Flat stitch seam construction
- Protective kneepads
- Seamless armpits
- Embossed chest logo
- This suit is a perfect match with the Combat vest (see page 24)

Blue: 300511001 - Red: 300411001 - Yellow: 300211001

Size chart on page 144-145



04.



01.



02.

01. Shorty Fusion

Color: Black, Red - Size: XS, S, M, L, XL, XXL

- 2.0 mm neoprene shorty
 - 100% double nylon suit, for extra strength
 - Flat stitch seam construction
 - Seamless armpits
- Black: 300812005 - Red: 300412003

02. Shorty Chiller

Size: S, M, L, XL, XXL

- 2.0 mm neoprene sleeveless shorty
 - Water repellent mesh on body and back panels
 - Rolled leg seals to keep water out
 - Flat stitch seam construction
- 300810005

Size chart on page 144-145



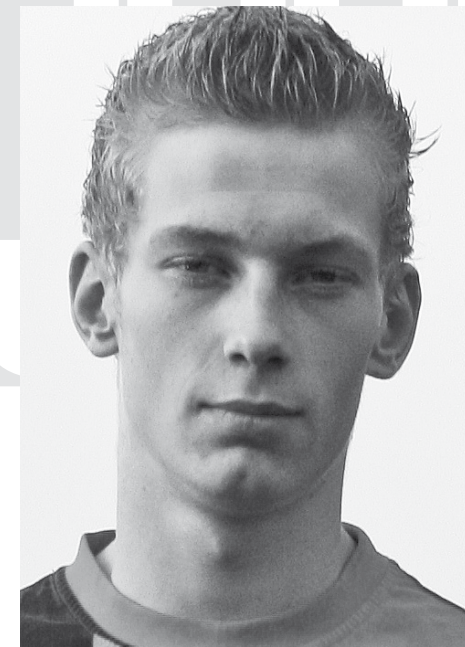
03.

03. Invert Barefoot Suit

Size: XXXS, XXS, XS, S, M, L, XL

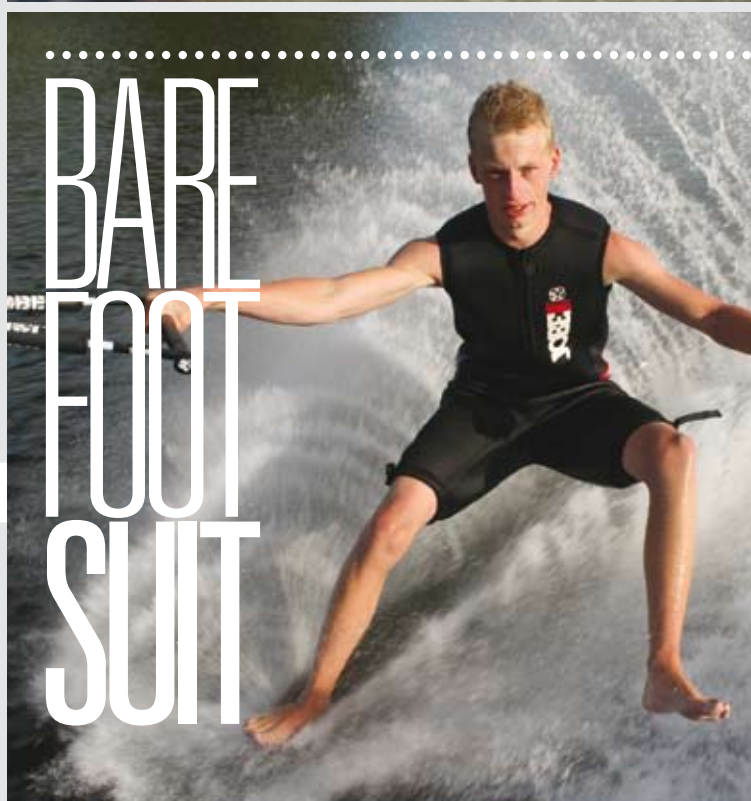
- Padded foam back and body panels for floatation and protection
- Extra thick 15 mm bottom padding
- 100% double nylon for extra strength
- Double stitched and mouser taped seams for extra strength
- Stiff 1.0" leg straps, adjustable and closing with a "Fix Lock" buckle
- Water drain patches

300811006

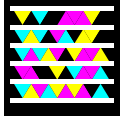


MATHIJS ZIELMAN

5th Overall World Championship 2010



**JOBE PRO
SKIER**



01.



02.

01. Neutron Back Zip

Size: S, M, L, XL, XXL

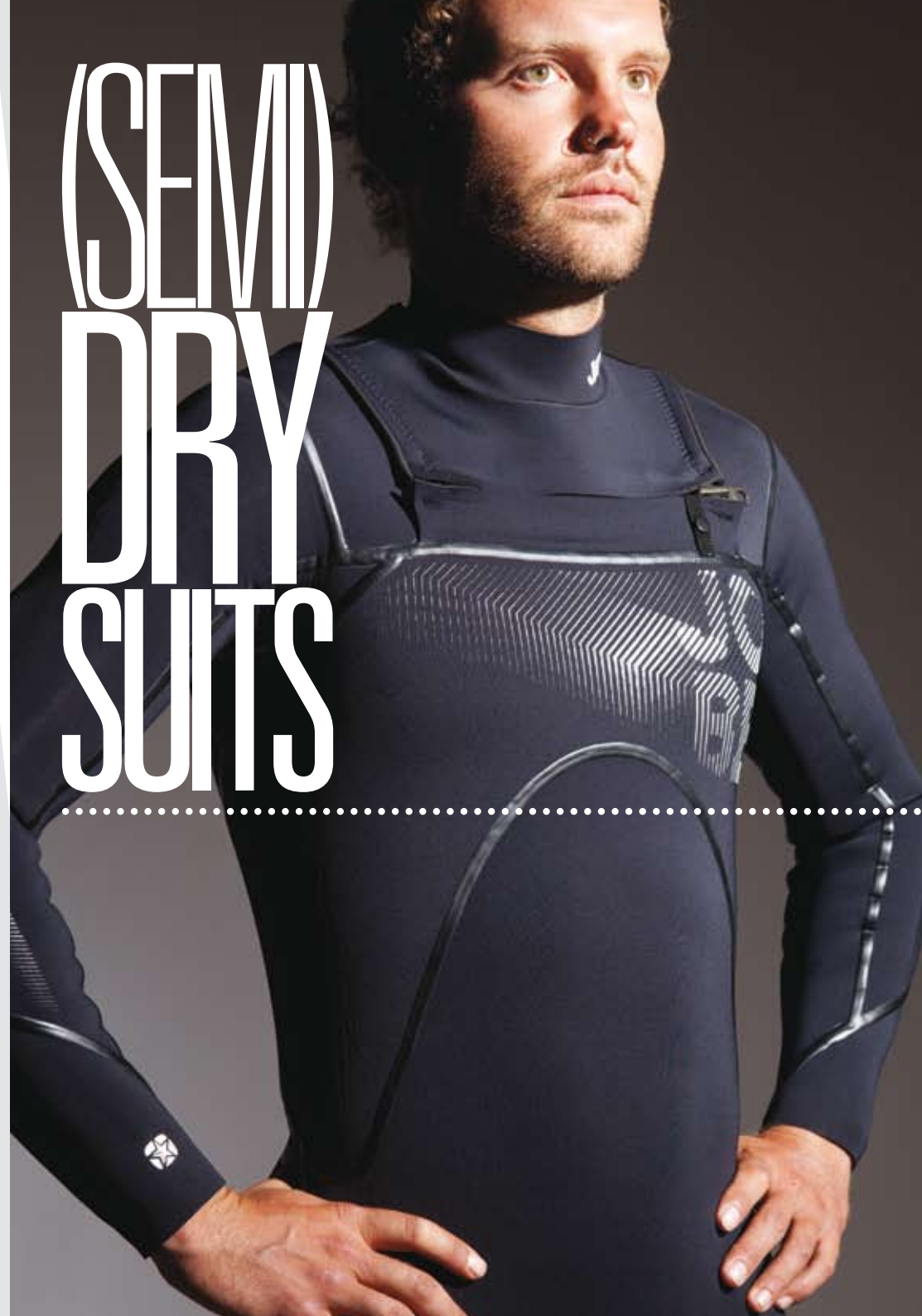
• 4.0 mm neoprene body and back • 3.0 mm neoprene legs and arms • "Liquid tape" seams to keep the water out • Overhead water shield with H2O drain • H2O draining panel on the legs • 100% super stretch • A-class neoprene for extra comfort • Thermo lining in body-, back- and side panels for extra warmth • Double layer collar design for extra comfort • Seamless armpits
300810006

02. Neutron Chest Zip

Size: S, M, L, XL, XXL

• 4.0 mm neoprene body and back panels • 3.0 mm neoprene legs and arms • "Liquid tape" and blind-stitched seams to keep the water out • Chest zip construction for ultimate flexibility • "Liquid tape" seals • H2O draining panel on the legs • 100% super stretch • A-class neoprene for extra comfort • Thermolining in body, back and side panels for additional warmth • Double layer collar design for extra comfort • Seamless armpits
300812001

(SEMI) DRY SUITS





03.
Men



03.
Ladies



04.



05.



06.

03. 5.0 mm Polar Steamer

Men size: S, M, L, XL, XXL - Ladies size: S, M, L, XL

- Preformed suit, special design for both men and women
- 5,0 mm mesh body and back panels
- 3,0 mm mesh arms and legs combined with super stretch neoprene on the flex areas for more freedom of movement
- A-class neoprene for extra comfort
- Full thermo inner lining for additional warmth
- Water repellent mesh panels
- "Glide skin" seals to keep water out
- Taped on critical areas for extra strength
- Water shield with H2O drain
- Comfortable "Glide skin" collar
- Glued and blind stitched
- Protective kneepads
- Seamless armpits

Men: 300811009 - Ladies: 300811010

04. Dry Suit Neoprene

Size: XS, S, M, L, XL, XXL

- Waterproof 210 denier breathable, coated nylon fabric
- Baggy upper fit for additional layering
- Streamlined 3.5mm Neoprene lower body panels and waterrepellent mesh lower legs
- 100% taped seams
- "Glide Skin" neck, wrist and ankle seals
- Waterproof horizontal back zipper

300812006

05. Dry Suit

Size: XS, S, M, L, XL, XXL

- 320 denier breathable nylon fabric with a nylon tricot coating on the inside
- Taped waterproof seams
- Latex neck-, wrist- and ankle seals
- High tech waterproof zipper
- Adjustable braces
- Elasticized waist for tailored fit
- Adjustable wrist and ankle straps

300809011

06. Thermo Underwear

Size: XS, S, M, L, XL, XXL

- Thermo suit to wear underneath your dry suit for additional warmth
- "Spandex" top layer with thermo inner lining
- 100% stretch fabric for more comfort

310809009

Size chart on page 144-145



01.

01. Viper Vest

Color: Black, Blue, Yellow - Size: S, M, L, XL, XXL, XXXL

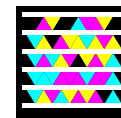
• 50N neoprene vest • CE-approved or United States Coast Guard approved • Segmented foam panels for extra freedom of movement • Foam side panels for extra protection • High side cut for more maneuverability • 2 Integrated webbing belts • D-ring for emergency cord attachment • Mesh panels for water drainage • This vest is a perfect match with the Viper suit (see page 10 - 11)

Black CE EN393 approved: 240811004 - Blue CE ISO approved: 240012001 - Yellow CE ISO approved: 240212007

Black USCG approved: 247712019 - Blue USCG approved: 247712020 - Yellow USCG approved: 247712021

Coast Guard approved version: Vest may lightly differ from shown image and specifications • No side foam

Size chart on page 144-145





02.

02. Intense Vest

Size: S, M, L, XL, XXL, XXXL

- 50N neoprene vest • CE-approved according to ISO 12402.5 or United States Coast Guard approved
- Comfortable soft PVC foam • Integrated reinforced back panel and back support for more protection
- Neoprene panels combined with shiny and soft "Glide skin" panels • Reflecting ink for extra visibility in the dark • Large armholes which allow extended reach and freedom of movement • D-ring for emergency cord attachment • 2 Integrated webbing belts • Mesh panels for water drainage

CE ISO approved: 240812002 - USCG approved: 247712024

Coast Guard approved version: Vest may lightly differ from shown image and specifications

- No back protector



VESTS MEN





01.

01. Freestyle Vest

Color: Black, White - Size: S/M, L/XL

- 50 N molded foam vest • CE-approved according to ISO 12402.5
- Pullover vest with side zipper • Fixed foam side panels for extra protection • Special molded exterior panels for lightweight durability • Fast drying, non water absorbing panels • Integrated back support

Black: 240810007 - White: 240110001



02.

02. Treasure Vest

Size: S, M, L, XL, XXL, XXXL

- 50N neoprene vest • CE-approved according to ISO 12402.5
- Pullover vest with side zipper • Comfortable soft PVC foam
- Extra padded side panels for more protection • Silicone print design • 2 Integrated webbing belts • Large armholes that allow extended reach and freedom of movement • D-ring for emergency cord attachment • Mesh panels for water drainage • This vest is a perfect match with the Quest suit (see page 13) 240812003

03. DLX Side Entry Vest

Size: S, M, L, XL, XXL, XXXL

- 50N neoprene vest with "Glide skin" panels • CE-approved according to ISO 12402.5 • Pullover vest with side zipper
- Comfortable soft PVC foam • Extra thick front panel for extra chest protection • Foam side panels for extra protection • Large armholes that allows extended reach and freedom of movement
- D-ring for emergency cord attachment • Mesh panels for water drainage • This vest is a perfect match with the Long John Jacket Deluxe (see page 33) 240812009



03.

Size chart on page 144-145



01.

01. Combat Vest

Color: Black, Yellow, Red, Blue - Size: S, M, L, XL, XXL, XXXL

• 50N neoprene vest • CE-approved according to ISO 12402.5 or United States Coast Guard approved • Thin foam panel for more maneuverability • D-ring for emergency cord attachment • Mesh panels for water drainage • This bright colored vest is a perfect match with the Extra suit (see page 15)

Black CE ISO approved: 240811005 - Yellow CE ISO approved: 240211003 - Red CE ISO approved: 240411004

Blue CE ISO approved: 240511002 - Black USCG approved: 247712006 - Yellow USCG approved: 247712008

Red USCG approved: 247712009 - Blue USCG approved: 247712007

Coast Guard approved version: Vest may lightly differ from shown image and specifications

Size chart on page 144-145



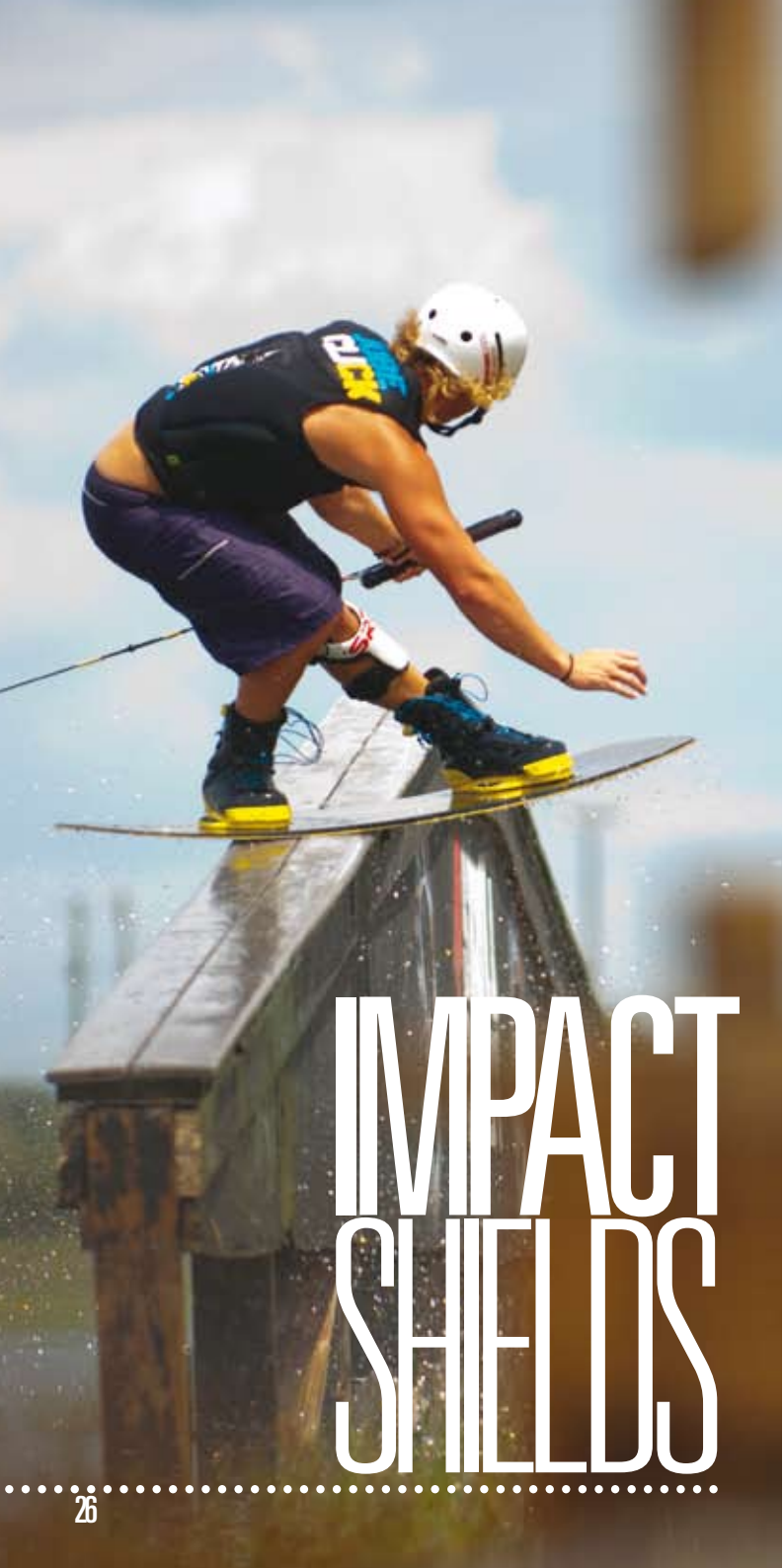
02.

02. Trigger Super Stretch Vest

Size: XS, S, M, L, XL, XXL, XXXL

- This is a unique neoprene vest made out of 100% flex fabrics • 50N neoprene vest
 - CE-approved according to ISO 12402.5 • The stretch fabric gives you much more comfort, a better fit and freedom of movement • Comfortable soft PVC foam • D-ring for emergency cord attachment • Mesh panels for water drainage
- 240810003





IMPACT SHIELDS



REVERSIBLE

01. Click Impact Shield

Size: S, M, L, XL

- A front zip jacket created by British cable champion CK Koester made out of 3D fabric, which makes the vest super lightweight, more comfortable to wear and fast drying
- This jacket gives you protection on the water
- Flex panels and segmented foam at the chest and back for more freedom of movement
- Zipper cover with easy magnet closing
- Large armholes that allow extended reach and freedom of movement
- This jacket is designed in the same style as the Click wakeboard (see page 66)

300512006 (NON coast guard or CE approved)

02. Field Impact Shield

Size: S, M, L, XL, XXL

- A front zip jacket made out of 3D fabric, which makes the vest super lightweight, more comfortable to wear and fast drying
- This jacket gives you protection on the water
- The additional foam panels on side and lower back offer extra protection to the more vulnerable parts of the body
- Segmented foam panels for more freedom of movement
- Large armholes which allows extended reach and freedom of movement

300811011 (NON coast guard or CE approved)

03. Vision Reversible Impact Shield

Size: S, M, L, XL

- A reversible pullover vest made out of 100% super stretch fabric for a great fit and extra freedom of movement
- This vest gives you extra protection and buoyancy on the water
- Zipless construction
- Extra side protection
- Lightweight
- Large armholes for extra freedom of movement
- All foam pockets have extra water drains
- This vest is a perfect match with the Vision suit (see page 12)

300810007 (NON coast guard or CE approved)

04. Alpha Impact Shield

Size Blue: XS, S, M, L, XL - Size Black: XXS, XS, S, M, L, XL

- A pullover jacket for protection on the water
- 100% super stretch fabric and segmented foam panels that give some extra freedom of movement
- New comfortable collar construction
- Back zip construction
- Side foam panels for protection
- Light weight
- Large armholes that allow extended reach and freedom of movement
- The Alpha Impact Shield blue is a perfect match with the Alpha shorty (see page 12)

Blue: 300512007 - Black: 300812008 (NON coast guard or CE approved)

05. Max Impact Shield Ladies

Size: XS, S, M, L, XL

- Specially designed jacket for ladies, created by our Jobe world champion Maxine Sapulette
- A pullover jacket made out of 100% super stretch fabric that gives you protection on the water
- Side foam panels for protection
- Non-zip construction
- Large armholes that allow extended reach and freedom of movement
- Extra water drains
- This jacket is designed in the same style as the Max wakeboard (see page 74)

300012007 (NON coast guard or CE approved)

06. Quote Impact Shield Ladies

Size: XS, S, M, L

- A pullover jacket for ladies made out of 100% super stretch fabric that gives you protection on the water
- New comfortable collar construction
- Side foam panels for protection
- Non-zip construction
- Large armholes that allow extended reach and freedom of movement
- Extra water drains
- Boardshort connector

300012009 (NON coast guard or CE approved)

07. Remix Impact Shield Ladies

Size: S, M, L, XL

- A front zip jacket for ladies made out of 3D fabric, which makes the vest super lightweight, more comfortable to wear and fast drying
- This jacket gives you protection on the water
- The additional foam panels on the side and lower back offer extra protection to the more vulnerable parts of the body
- Segmented foam panels for more freedom of movement
- Large armholes that allow extended reach and freedom of movement
- This jacket is a perfect combination with the boardshort SoHo (see page 55)

300012008 (NON coast guard or CE approved)

Size chart on page 144-145

05.



06.



07.





USCG APPROVED



01.



02.



03.



04.



VESTS LADIES



01. Indy Vest

Color: Blue, Purple - Size: S, M, L, XL, XXL (size XXL not available in USCG approved version)
 • 50N neoprene vest designed for ladies • CE-approved according to ISO 12402.5 or United States Coast Guard approved • Comfortable soft PVC foam • Half integrated webbing straps D-ring for emergency cord attachment • This vest is a perfect match with the Indy suits (see page 6)
 Blue CE ISO approved: 240512005 - Purple CE ISO approved: 241312001
 Blue USCG approved: 247712022 - Purple USCG approved: 247712023
 Coast Guard approved version: Vest may lightly differ from shown image and specifications

02. Pure Neo Vest Blue

Size: XS, S, M, L, XL
 50N ISO-approved nylon vest designed especially for ladies • The interior of the vest is made out of neoprene for extra comfort, the exterior is made out of nylon • Comfortable soft PVC foam
 • D-ring for emergency cord attachment
 240510002

03. Essence Vest

Size: XS, S, M, L, XL, XXL (size XS not available in USCG approved version)
 • 50N neoprene vest designed for ladies • CE-approved according to ISO 12402.5 or United States Coast Guard approved • Soft PVC-foam front panel • D-ring for emergency cord attachment • This vest is a perfect match with the Essence suits (see page 9)
 CE ISO approved: 240812004 - USCG approved: 247712010
 Coast Guard approved version: Vest may lightly differ from shown image and specifications

04. Pure Vest Pink

Size: XS, S, M, L, XL, XXL
 • 50N nylon vest designed for ladies • CE-approved according to ISO 12402.5 • Soft PVC-foam front panel • D-ring attachment • This vest is a perfect match with the Pure Shorty (see page 9)
 241412002

05. Code Vest

Size: XS, S, M, L, XL, XXL (size XS not available in USCG approved version)
 • Neoprene vest made out of 100% flex fabrics • 50N neoprene vest designed for ladies
 • CE-approved according to ISO 12402.5 or United States Coast Guard approved • The stretch fabric gives you much more comfort, a better fit and freedom of movement • Neoprene panels combined with shiny and soft "glideskin" panels • Comfortable soft PVC foam • Integrated webbing straps • D-ring for emergency cord attachment • Mesh panels for water drainage
 CE ISO approved: 240012002 - USCG approved: 247712005
 Coast Guard approved version: Vest may lightly differ from shown image and specifications

06. Delight Side Entry Vest

Color: Pink, Blue - Size: XS, S, M, L, XL
 • 50N neoprene vest designed for ladies • CE-approved according to ISO 12402.5 • Comfortable soft PVC foam • Extra padded side panels for more protection • Pullover vest with side zipper
 • Half integrated webbing straps • Large armholes that allow extended reach and freedom of movement • D-ring for emergency cord attachment • Mesh panels for water drainage • This vest is a perfect match with the Delight suits (see page 5)
 Pink: 241412003 - Blue: 240512002

Size chart on page 144-145



01.



02.



03.



04.

05.



01. 4 Buckle Pro Vest

Color: Black, Yellow, Red - Size: XS, S, M, L, XL, XXL, XXXL
 • 50N neoprene vest • CE-approved according to ISO 12402.5 or United States Coast Guard approved • Soft PVC foam for more comfort • Side foam panels for extra protection • D-ring for emergency cord attachment
 Black CE ISO approved: 240811002 - Yellow CE ISO approved: 240211001
 Red CE ISO approved: 240411001 - Black USCG approved: 247712001
 Yellow USCG approved: 247712003 - Red USCG approved: 247712002
 Coast Guard approved version: Vest may lightly differ from shown image and specifications

02. Outburst Vest

Color: Blue, Yellow, Red - Size: S/M, L/XL, XXL/XXXL, 4XL/5XL (size 4XL/5XL not available in USCG approved version)
 • 50N neoprene vest • CE-approved according to ISO 12402.5 or United States Coast Guard approved • Nylon side panels for adjustability • Fully adjustable straps for a better fit • D-ring for emergency cord attachment
 Blue CE ISO approved: 240511001 - Yellow CE ISO approved: 240211002
 Red CE ISO approved: 240411002 - Blue USCG approved: 247712012
 Yellow USCG approved: 247712014 - Red USCG approved: 247712013
 Coast Guard approved version: Vest may lightly differ from shown image and specifications

03. Universal Vest

Color: Yellow, Red - Size: Universal
 • 50N neoprene vest • CE-approved according or United States Coast Guard approved • One size fits all • CE EN 393 approved version are limited
 Yellow CE EN393 approved: 240209003 - Red CE EN393 approved: 240409005
 Yellow CE ISO approved: 240211005 - Red CE ISO approved: 240411006
 Yellow USCG approved: 247712018 - Red USCG approved: 247712017
 Coast Guard approved version: Vest may lightly differ from shown image and specifications

04. Pet Buoyancy Jacket

Color: Red, Pink - Size: XS, S, M
 • This is a comfortable neoprene vest for your dog but can be used for other pets as well • Reflective panel for more visibility • D-ring attached for dog leash • Zipper on back for easy entry and exit • Handle on back • Neoprene on belly to protect the skin from the webbing and buckles
 Red: 240410008 - Pink: 241412001

05. Dog Leash

Specs: 6ft / 183cm
 210001056

06. Comfort Boating Vest

Size: Junior, S, M, L, XL
 • 100 Newton boating vest • CE-approved according to ISO 12402.4
 • Reflective panels and non clog whistle for safety • All versions provided with crotch straps • Strong nylon outer cover and lightweight foam
 240312001

07. Easy Boating Package

Content: 2 x S/M, 3 x L/XL
 • 5 x 100 Newton boating vests complete with ventilating transparent bag
 • CE-approved according to ISO 12402.4 • Horseshoe style with strong nylon outer cover • Reflective panels and waterproof whistle for safety
 240312002

08. Universal Package

Content: 4 Universal vests
 • 4 CE-approved 50 Newton nylon vests complete with ventilating transparent bag • CE-approved according to ISO 12402.5 • One size fits all
 240411007

Size chart on page 144-145

VESTS UNISEX



06.



07.



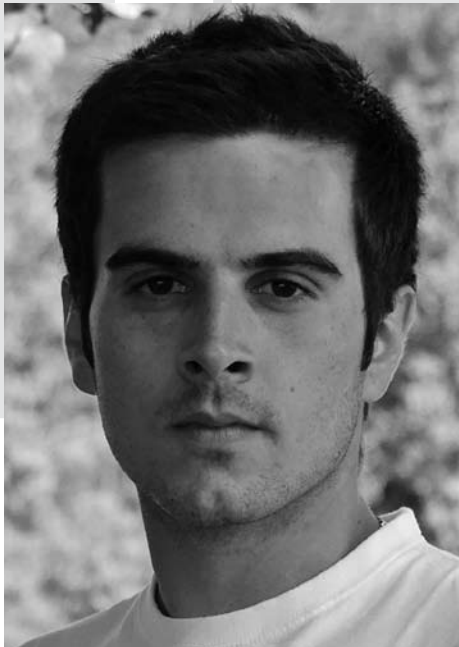
5x



08.



4x



CHRISTOPHER COURTOIS
World Champion Aquabike UIM 2010

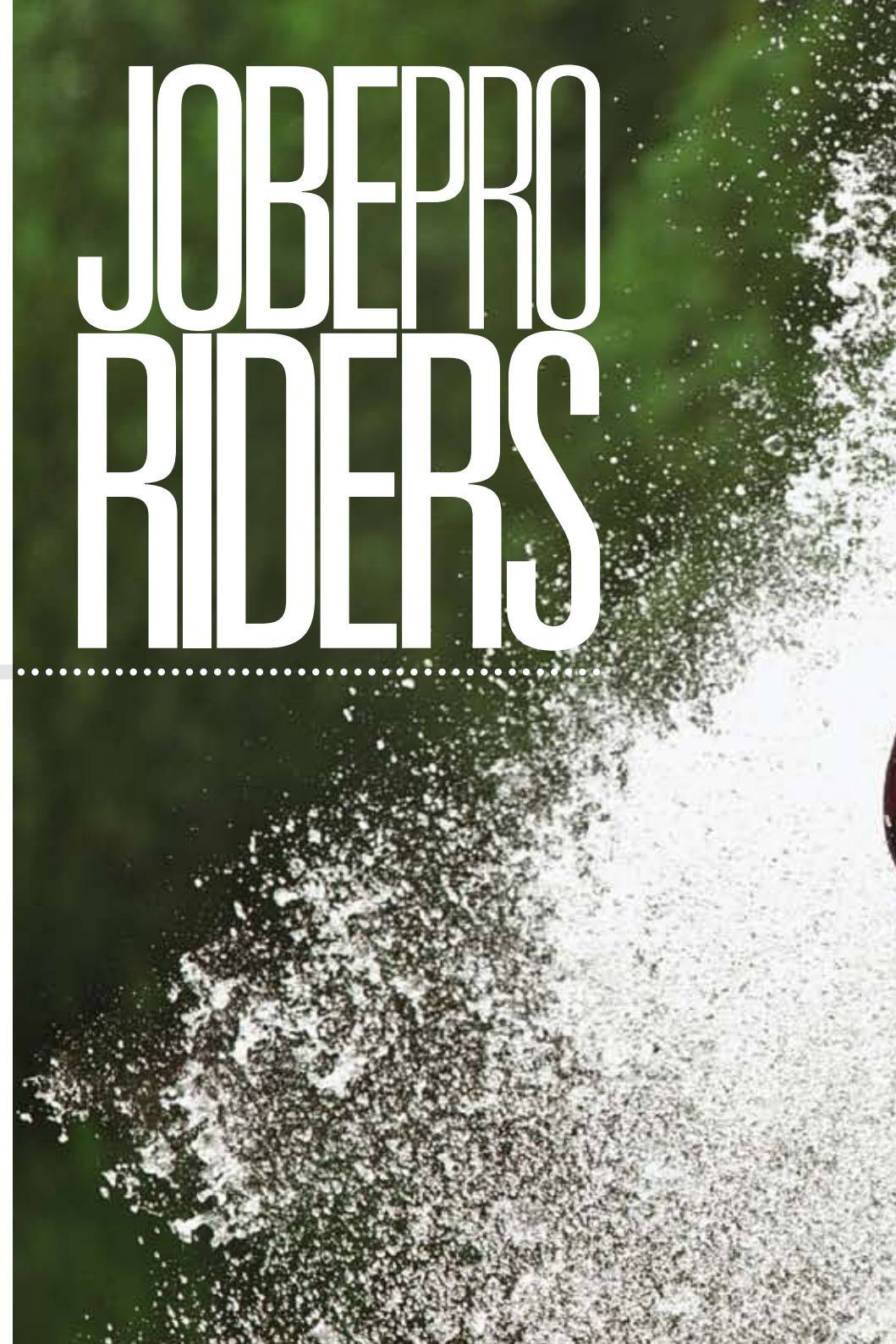


JACK MOULE
3 times British Jetski Freestyle Champion



MAX VAN DER VALK
4th at European Tour Ski GP 2011

JOBEPRO RIDERS





PWC GEAR

RIDER: JACK MOULE



01.

01. Long John Jacket DLX

Size: S, M, L, XL, XXL, XXXL

- 2.5 mm neoprene wetsuit • 2.0 mm neoprene jacket • 100% super stretch fabric
 - A-class neoprene for extra comfort • "Glide skin" seals to keep the water out
 - Comfortable ultra stretch collar • Flat stitch seam construction • Back zipper on the suit
 - Short back zipper construction on the jacket • Integrated 5.0 mm shin, knee and inner knee protectors • Seamless armpits • This suit is a perfect match with the DLX side entry vest (see page 37)
- 300811012



01.

01. Long John Jacket Secure

Color: Blue, Black - Size: S, M, L, XL, XXL, XXXL

- 2.0 mm neoprene wetsuit and jacket
- "Glide skin" seals to keep water out
- Long John equipped with "Spandex" short sleeves
- Flat stitch seam construction
- Seamless armpits
- This suit is a perfect match with the Secure Side Entry vest (see page 37)

Blue: 300509006 - Black: 300409008

Size chart on page 144-145



02.

02. Long John Jet Queen

Size: XS, S, M, L, XL

- Special designed wetsuit with jacket for women
 - Consists of a 2.0 mm neoprene sleeveless wetsuit and a 2.0 mm front zipper neoprene jacket
 - "Glide skin" seals to keep water out
 - Flat stitch seam construction
 - Protective kneepads
 - Seamless armpits at the jacket
 - This suit is a perfect match with the Delight vest (see page 28)
- 300012006



01.

01. Furious Jetski Pants

Size: S, M, L, XL

- Lace closing
- Flex panel on the back for extra freedom of movement
- Adjustable side straps
- 2.0 mm neoprene thigh panels for extra protection
- Detachable legs to transform pants into shorts

310812001



02.



03.



04.



04.



05.

02. Jet Jacket Blue

Size: M, L, XL, XXL, XXXL

- 2.0 mm neoprene body and back • 1.5 mm neoprene on arms • A-class neoprene for extra comfort • 100% super stretch fabric • "Glide skin" seals to keep the water out • Comfortable ultra stretch collar • Flat stitch seam construction • Front zipper construction • Elbow pads • Seamless armpits
- 300508003

03. Neoprene Jacket

Size: M, L, XL

- 1.5 mm neoprene jacket • Combination of mesh and neoprene panels • Flat stitch construction • Fleece body for extra warmth • Water repellent mesh • Water drains in pockets
- 300809008

04. Secure Side Entry Vest

Color: Black, Blue - Size: S/M, L/XL, XXL/XXXL

- 50N nylon side entry vest • CE-approved • Thick PVC foam for extra chest protection • D-ring for emergency cord attachment • This vest is a perfect match with the Long John Jacket Secure (see page 34)
- Black Limited Edition CE EN393 approved: 240811003 - Blue Limited Edition CE EN393 approved: 240411003
Black CE ISO approved: 240812006 - Blue CE ISO approved: 240512003

05. DLX Side Entry Vest

Size: S, M, L, XL, XXL, XXXL

- 50N neoprene vest with "Glide skin" panels • CE-approved according to ISO 12402.5 • Pullover vest with side zipper • Comfortable soft PVC foam • Extra thick front panel for extra chest protection • Foam side panels for extra protection • Extra long and wide area for arms that allows extended reach and freedom of movement • D-ring for emergency cord attachment • Mesh panels for water drainage • This vest is a perfect match with the Long John Jacket DLX (see page 33)
- 240812009

Size chart on page 144-145

01. Floatable Glasses

Color Knox: White, Blue, Silver, Black Rubber

Color Cypris: Silver

- Unique and comfortable design
- Lens protection rate of UV400
- Black Rubber version comes with polarized lenses

Knox White: 420108001 - Knox Blue: 420506001

Knox Silver: 420705001

Knox Black Rubber Polarized: 420810001

Cypris Silver: 420708001

02. Goggles

Colour: Black, Silver

- Unique and comfortable design
- PC double lens with anti-fog and protection rate UV400

Black: 420812001 - Silver: 420706001

03. Neoprene Socks

Size: S, M, L

- 2.0 mm super stretch neoprene
- Glued and stitched

300804009

04. H2O Shoes High model

Size: 3 up to 12

- 2.0 mm neoprene shoes with reinforced sole
- Ideal for all water sports activities
- Comfortable and warm
- Solid reinforced sole for extra comfort on rough surfaces
- Airprene construction for extra ventilation

300811014

05. Aqua Shoes

Size: 3 up to 12

- Ideal shoes for all water sports activities
- Comfortable and warm
- Soft comfortable sole
- "Airmesh" for water draining

300810012

06. Neoprene Boot Black Head

Size: 4 up to 12

- Inner sock for warmth
- Reinforced heel for support
- Stiff sole provides excellent grip
- Water drain panels
- Fast drying

300812002

07. Neoprene Boot Black Rave

Size: 5 up to 12

- Inner sock for warmth
- Reinforced heel for stiffness
- Stiff sole provides excellent grip
- Water drain panels
- Fast drying

300409010

Size chart on page 144-145

01.



03.



01.



04.



01.



01. Polarized



05.



01. Cypris



06.



02.



07.



RIDER: MAX VAN DER VALK





08. Suction Gloves

Size: XS, S, M, L, XL, XXL
 • Short model for more freedom of movement • Anti slip silicon-printed hand palm • Padded panels on palm of hand • PVC knuckle and finger guards • Segmented finger design • Soft and strong Amara fabric in palm of hand
 340810004

09. Swathe Gloves

Size: XS, S, M, L, XL, XXL
 • Short model for more freedom of movement • Padded panels and nonslip silicon print on palm for extra grip • Segmented finger design • Soft and strong Amara fabric in palm of hand
 340810003

10. Neoprene Gloves

Size: S, M, L, XL, XXL
 • 2.5 mm neoprene glove for extra warmth • Glued and blind stitched seams • Nonslip silicon-printed hand palm
 340810001

11. Neoprene Hood

Size: S, M, L
 • 4.0 mm super stretch neoprene hood for extra warmth
 300810015

12. Shin Protector

Size: M, L, XL
 • 5.0 mm protector that protects the shin, knee and inner knee • Adjustable width • Comes in 2-piece set
 300809012

13. Wrist Seal

Size: Universal
 • Neoprene wrist seal, safety device
 300803010

14. Emergency Cord

• Four different keys to fit all PWC brands like Yamaha, Sea-Doo (non-DESS), Kawasaki, Polaris, Tigershark and Wet Jet
 420008003

15. Barracuda Helmet

Size: M (57-58cm), L (59-60cm), XL (61-62cm)
 New in the Jobe range the Barracuda full face helmet. This professional protection gear is specially designed for Jetski and Personal Water Craft (PWC) riders. Made out of high quality polycarbonate, for maximum protection from high impact • E certification
 • Comfortable soft inner lining • Fit pads • Adjustable chin strap with safety clip • Adjustable sun visor • Full covered art work
 • Includes soft protection bag for storage
 370012001

Size chart on page 144-145



08.



09.



10.



11.



12.



13.



14.



15.



01.

01. Rebel Steamer Youth

Size: L, XL, XXL

- 5.0 mm water repellent mesh body and back for extra warmth
- 3.0 mm arms and legs • Soft "Glide skin" seals to keep water out
- Comfortable "Glide skin" collar • Glued and blind stitched construction
- Taped on critical areas for extra strength
- Protective kneepads • Seamless armpits

300809009

WET SUITS YOUTH





02.

02. Full Suit Rebel

Color: Red, Yellow, Blue - Size: XXS, XS, S, M, L, XL, XXL

- 3.0 mm water repellent mesh body and back for extra warmth • 2.5 mm neoprene arms and legs • Comfortable "Glide skin" collar • "Glide skin" seals for easy entry/exit • Flat stitch seam construction • Protective kneepads • Seamless armpits • This suit is a perfect match with the Rebel Jacket (see page 44)

Red: 300410004 - Yellow: 300210002 - Blue: 300510004



03.

03. Shorty Rebel

Color: Red, Yellow, Blue - Size: XXS, XS, S, M, L, XL, XXL

- 2.5 mm water repellent mesh body and back for extra warmth • 2.0 mm neoprene arms and legs • Comfortable "Glide skin" collar • "Glide skin" seals for easy entry/exit • Flat stitch seam construction • Seamless armpits • This suit is a perfect match with the Rebel Jacket (see page 44)

Red: 300410003 - Yellow: 300210001 - Blue: 300510003

Size chart on page 144-145



01.



02.



03.



04.



05.
€ 233,95



06.



07.



08.

09.

01. Shorty Trace

Color: Pink, Black - Size: XS, S, M, L, XL, XXL, XXXL
• 2.0 mm neoprene shorty for juniors • 100% nylon for extra strength • Flat stitch seam construction • Seamless armpits • This suit is a perfect match with the Trace youth vest (see page 44)
Pink: 301412001 - Black: 300812009

02. Rash Suit Fish

Size: 3XS, 2XS
• "Spandex" short made of comfortable, soft and "4-way stretch" fabric with the highest UV protection • Zipper for easy entry and exit • Flat stitch seam construction • Seamless armpits
300511005

03. Crazy Dino Floating Suit

Size: 3XS/2XS
• Rash suit with floatation panels • CE-approved as swimming aid according to EN1318-1:2003 • UV protective fabrics • Comfortable, soft and "4-way stretch" fabric • Flat stitch seam construction • Seamless armpits
241108001

04. Shorty Flex Youth

Size: XS, S, M, L, XL, XXL
• 2.0mm neoprene shorty for juniors • 100% nylon for extra strength • Flat stitch construction • Seamless armpits • Standard neoprene
300409009

05. Shorty Joy

Size: XXS, XS, S, M
• Child-friendly shorty for youngsters • 2.5 mm neoprene body and back • 2.0 mm neoprene arms and legs • 100% double nylon for extra strength • Comfortable "Glide skin" collar • "Glide skin" seals to keep water out • Flat stitch seam construction • Seamless armpits • This suit is a perfect match with the youth vest Joy (see page 44)
300411005

06. Rash Guard Happy Rhino

Size: 4XS/3XS, 2XS/XS
• A rash guard for younger children • Comfortable, soft and "4-way stretch" fabric with the highest UV protection • Zipper at the back for easy entry and exit • Flat stitch seam construction
310512001

07. Rash Guard Antzz

Size: 2XS/XS
• A good looking rash guard for the younger children • UV protection, UPF 50+ rating • Comfortable, soft and 4-way stretch fabric • Zipper for easy entry and exit
• Flat stitch construction
310110002

08. Aqua Shoes Youth

Size: XS, S, M, L, XL
• Ideal shoe for all watersports activities • Comfortable and warm • Soft comfortable sole • "Airmesh" for water draining
300810011

09. H2O Shoes Youth

Size XS, S, M, L, XL
• 2.0 mm neoprene shoes • Ideal for all water sports activities • Comfortable and warm • Solid reinforced sole for extra comfort on rough surfaces • Airprene construction for extra ventilation
300407012



10.



11.

10. Rash Guard Micron Youth

Color: Purple, White - Size: 2XS/XS, S/M, L/XL
• Comfortable, soft and "4-way stretch" fabric with the highest UV protection and special fast drying fabric • Seamless armpits for more comfort • Size 2XS/XS is equipped with zipper at the back for easy entry and exit • This rash guard is a perfect match with the Micron Boardshort
Purple: 310111009 - White: 310811011

11. Boardshort Micron Youth

Color: Black, Purple - Size: S, M, L, XL, XXL
• Lace closure with extra "Spandex" back panel • Lightweight and fast drying • Back pocket with zipper incl. key lace • Mesh water drain pocket • This boardshort is a perfect match with the Micron Rash Guard
Purple: 310811015 - Black: 310811012

Size chart on page 144-145



01.



02.



03.



04.



05.



06.



07.



08.



01. Rebel Jacket Youth

Color: Red, Blue, Yellow - Size: S/M, L/XL, XXL

- Non CE-approved
- Comfortable soft neoprene jacket
- Contoured side and back panels for excellent maneuverability
- This jacket is a perfect match with the Rebel suit (see page 41)

Red: 240410006 - Blue: 240510003 - Yellow: 240210001

02. Micron Youth Vest

Color: Black, Purple - Size: Youth

- 50N neoprene vest
- CE-approved or United States Coast Guard approved
- Soft and comfortable PVC foam
- D-ring for emergency cord attachment
- This vest is a perfect match with the Micron boardshort and rash guard (see page 43)

Black CE EN 393 approved: 240811006

Black CE ISO appr.: 240812010 - Purple CE ISO appr.: 241312002

Black USCG appr.: 247712025 - Purple USCG appr.: 247712026

Coast Guard approved version: Vest may lightly differ from shown image and specifications

03. Trace Youth Vest Nylon

Color: Black, Pink - Size: Youth

- 50N neoprene vest
- CE-approved according to ISO 12402.5 or United States Coast Guard approved
- Comfortable soft PVC foam
- Side panels
- D-ring for emergency cord attachment
- This vest is a perfect match with the shorty Trace (see page 42).

Black CE ISO appr.: 240812005 - Pink CE ISO appr.: 241412004

Black USCG appr.: 247712015 - Pink USCG appr.: 247712016

Coast Guard approved version: Vest may lightly differ from shown image and specifications

04. Starter Youth Vest

Size: Youth 30-40 kg

- 50N nylon youth vest
- CE-approved according to ISO 12402.5
- Side foam panels
- Half integrated webbing straps

240412003

05. Joy Youth Vest

Size: Youth 30-40 kg

- 50N nylon youth vest
- CE-approved according to ISO 12402.5
- Nylon side panels for maximum adjustability
- Crotch straps
- This jacket is a perfect match with the shorty Joy (see page 42.)

240212006

06. Scribble Vest

Size: Youth 30-40 kg

- 50N neoprene vest
- CE-approved according to ISO 12402.5
- Nylon side panels for maximum adjustability
- Crotch straps

240012003

07. Comfort Boating Vest Youth

Color: Yellow, Orange - Size: 3XS/2XS, XS/S, M/L

- 100N boating vest
- CE-approved according to ISO 12402.4
- Reflecting panels for better visibility
- Waterproof whistle included
- Crotch straps
- Strong nylon outer cover and lightweight foam

Yellow: 240212005 - Orange: 240312003

08. Nexus Safety Vest

Size: Infant, Child (*size Child not available in USCG approved version*)

- 100N safety vest with collar
- CE-approved according to EN 395 or United States Coast Guard approved
- Soft and comfortable PVC foam
- Crotch straps
- Reflecting panels
- Waterproof whistle included

CE approved: 240410002 - USCG approved: 247712011

Coast Guard approved version: Vest may lightly differ from shown image and specifications

• no reflecting panels • 1 webbing belt • 1 crotch strap

Size chart on page 144-145





01.



02.



03.



04.



05.



06.



07.
08.
09.
10.

01. Rash Guard Loose Fit

Size: S, M, L, XL, XXL

• Baggy style rash guard • Comfortable, soft and "4-way stretch" fabric with the highest UV protection • Flat stitch seam construction
310012010

02. Rash Guard Engine

Size: XS, S, M, L, XL

• Comfortable, soft and "4-way stretch" fabric with the highest UV protection • Seamless armpits for more comfort • low collar design • Flat stitch seam construction • Incl. boardshort connector
310012008

03. Rash Guard Logo Series

Size: S, M, L, XL, XXL, XXXL

• Comfortable, soft and "4-way stretch" fabric with the highest UV protection • Seamless armpits for more comfort • Flat stitch seam construction • Incl. boardshort connector • This rash guard is a perfect match with the boardshort Logo Series (see page 53)
310012012

04. Rash Guard Sleeveless

Size: S, M, L, XL

• Sleeveless rash guard for warm days • Comfortable, soft and "4-way stretch" fabric with the highest UV protection • Incl. boardshort connector
310111004

05. Rash Guard Neoprene Select Short Sleeve

Size: S, M, L, XL

• 1.0mm neoprene with fleece inner lining for additional warmth and a soft touch • Lightweight and flexible • Comfortable Spandex sleeves • Seamless armpits for more comfort • Flat stitch construction • Seamless armpits • This rash guard is a perfect match with the boardshort Cross Flex (see page 53)
310811019

06. Rash Guard Neoprene Faith Long Sleeve

Size: S, M, L, XL

• 1.0 mm neoprene with a fleece inner lining for additional warmth • 100% super stretch fabric for more comfort and flexibility • Seamless armpits for more comfort • Durable "Glide skin" panels • Incl. boardshort connector • Flat stitch seam construction
310811018

07. Rash Guard Long Sleeve White

Size: XS, S, M, L, XL

• UV protection, UPF 50+ rating • Comfortable, soft and 4-way stretch fabric • Flat stitch construction
310110004

08. Rash Guard Long Sleeve Grey

Size: XS, S, M, L, XL

• Comfortable, soft and "4-way stretch" fabric with the highest UV protection • Low collar design • Flat stitch seam construction • Incl. boardshort connector
310012011

09. Rash Guard Thermo Sense Short Sleeve

Size: S, M, L, XL

• Short sleeve design • Comfortable, soft and "4-way stretch" fabric with the highest UV protection • "Biopoly" thermolining for additional warmth • The "Biopoly" gives extra warmth, is stretchy, strong, lightweight and fast drying • Seamless armpits for more comfort • Flat stitch seam construction • This rash guard is a perfect match with the boardshort Sense (see page 50)
310012009

10. Rash Guard Thermo Sense Long Sleeve

Size: S, M, L, XL

• Long sleeve design • Comfortable, soft and "4-way stretch" fabric with the highest UV protection • "Biopoly" thermolining for additional warmth • The "Biopoly" gives extra warmth, is stretchy, strong, lightweight and fast drying • Seamless armpits for more comfort • Flat stitch seam construction • This rash guard is a perfect match with the boardshort Sense (see page 50)
310812002

01.
Grey



02.
Grey

01.
Blue



02.
Blue

01. Rash Guard Future

Colour: Grey, Blue, - Size: XS, S, M, L, XL

- Ladies rash guard with v-neck design
- Comfortable, soft and "4-way stretch" fabric with the highest UV protection
- Seamless armpits for more comfort
- Flat stitch seam construction
- Seamless armpits
- This rash guard is a perfect match with the swim short Future

Grey: 310012016 - Blue: 310111016

02. Swim Short Future

Colour: Grey, Blue - Size: XS, S, M, L, XL

- Ladies "Spandex" short with belt
- Comfortable, soft and "4-way stretch" fabric with the highest UV protection
- Flat stitch seam construction
- This short is a perfect match with the rash guard Future

Grey: 310012017 - Blue: 310111017

03. Rash Guard Mission

Size: XS, S, M, L, XL

- Comfortable, soft and "4-way stretch" fabric with the highest UV protection
- Flat stitch seam construction
- Low collar design
- Seamless armpits for more comfort
- Incl. boardshort connector
- This Rash Guard is a perfect match with the boardshort Mission (see page 54)

310012013

04. Rash Guard Flash

Size: XS, S, M, L, XL

- Ladies rash guard with cap sleeve design
- Comfortable, soft and "4-way stretch" fabric with the highest UV protection
- Low collar design
- Seamless armpits for more comfort
- Flat stitch seam construction
- Incl. boardshort connector
- This rash guard is a perfect match with the boardshort Flash (see page 54)

310012015

05. Rash Guard Stitch

Size: XS, S, M, L, XL

- Ladies rash guard with cap sleeve design
- UV protection, UPF 50+ rating
- Comfortable, soft, 4-way stretch quick drying fabric
- Seamless armpits for more comfort
- Flat stitch construction
- Seamless armpits
- This rash guard is a perfect match with the boardshort Stitch (see page 54)

310111012

06. Rash Guard Thermo Charm

Size: XS, S, M, L, XL

- Comfortable, soft and "4-way stretch" fabric with the highest UV protection
- "Biopoly" thermolining for additional warmth
- The "Biopoly" gives extra warmth, is stretchy, strong, lightweight and fast drying
- Seamless armpits for more comfort
- Flat stitch seam construction
- Seamless armpits
- Incl. boardshort connector

310111005

07. Rash Guard Neoprene Purple Long Sleeve

Size: XS, S, M, L, XL

- Special ladies design
- 0.5 mm neoprene body with metal coating inside for additional warmth
- Lycra arms for more flexibility
- Flat stitch construction
- Seamless armpits

310810002

08. Rash Guard Ladies Neoprene Long Sleeve

Size: XS, S, M, L, XL

- 1.0 mm neoprene with a fleece inner lining at chest and back for additional warmth
- 100% super stretch fabric for more comfort and flexibility
- Seamless armpits for more comfort
- Incl. boardshort connector
- Flat stitch seam construction

310012014

Size chart on page 144-145



03.



04.



05.



06.



07.



08.



01.



02.



03.



04.

01. Boardshort Burst Stretch

Size: S, M, L, XL
 Super stretch fabric for the ultimate flexibility, 90% polyester and 10% "Spandex" • Lightweight and fast drying • Lace closing with "Spandex" back panel • Back pocket drained by mesh panels
 • Key cord attached
 310012001

02. Boardshort Sense

Size: XS, S, M, L, XL, XXL
 • Lace closing with "Spandex" back panel • Lightweight and fast drying fabric, 100% polyester • Side pocket drained by mesh panels with zipper closing • Key cord attached • This boardshort is a perfect match with the rash guard Sense Neoprene Short Sleeve (see page 47)
 310012002

03. Boardshort Next

Size: S, M, L, XL
 • Lace closing with "Spandex" back panel • Lightweight and fast drying fabric, 100% polyester • Side pocket drained by mesh panels with Velcro closing • Key cord attached
 310012003

04. Boardshort Subject

Size: S, M, L, XL
 • Lace closing with "Spandex" back panel • Lightweight and fast drying fabric, 100% polyester • Back pocket drained by mesh panels with Velcro closing • Key cord attached
 310512002

Size chart on page 144-145



**BOARD
SHORTS
MEN**





01.
Black



01.
Red



02.



03.



04.

01. Boardshort Logo Series

Color: Black, Red

Size Black: S, M, L, XL, XXL, XXXL - Size Red: XS, S, M, L, XL, XXL

- Lace closure with "Spandex" back panel
- 100% polyester rip-stop fabric
- Lightweight and fast drying
- Back pocket drained by mesh panels with Velcro closing
- Key cord attached
- This boardshort is a perfect match with the rash guard Logo Series (see page 46)

Black: 310512003 - Red: 310412001

02. Boardshort Block

Size: XS, S, M, L, XL

- Lace closing with Spandex back panel
- Lightweight and fast drying fabric
- Back pocket with zipper closing, water draining mesh panel and key lace

310811001



03. Boardshort Cross Flex

Size: S, M, L, XL

- A special low waist design for a baggy style
- Lace closing with extra Spandex back panel
- Flex neoprene panel on the back for extra freedom of movement
- Lightweight and fast drying
- Back pocket with velcro closing
- The pocket includes water drains and key lace
- This boardshort is a perfect match with the Rash Guard Neoprene Select (see page 46)

310011001



04. Boardshort Star Neoprene

Size: S, M, L, XL, XXL, XXXL

- Lace closing with extra "Spandex" back panel
- This short has a 1.5 mm inner neoprene short for added warmth and protection
- Fast drying fabric
- Slit pocket with mesh lining for the better water draining

310811008

Size chart on page 144-145



01.



02.



03.



04.



05.



06.



07.

BOARD SHORTS LADIES



01. Boardshort Mission

Size: XS, S, M, L, XL

- Lace closing with "Spandex" back panel
- Lightweight and fast drying fabric, 100% polyester
- Back pocket drained by mesh panels with Velcro closing
- Key cord attached
- This boardshort is a perfect match with the rash guard Mission (see page 49) 310012004

02. Boardshort Fame Stretch

Size: XS, S, M, L, XL

- Super stretch fabric for the ultimate flexibility, 90 % polyester and 10 % "Spandex"
- Lightweight and fast drying
- Button closing
- Back pocket drained by mesh panels
- key cord attached 310012006

03. Boardshort SoHo

Size: S, M, L, XL, XXL

- Lace closure with "Spandex" back panel
- Lightweight and fast drying fabric, 100% polyester
- Back pocket drained by mesh panels with Velcro closing
- Keycord attached
- This boardshort is a perfect match with the Impact Shield Remix (see page 27) 310012005

04. Boardshort Charm

Size: S, M, L

- Lace closing with Spandex back panel
- Lightweight and fast drying fabrics
- Side pocket with key lace
- Hidden zipper pocket on the back side
- All pockets are water drained by mesh panels
- This short is a perfect match with the Rash Guard Thermo Fleece (see page 49) 310111010

05. Boardshort Flash

Size: XS, S, M, L

- Short model boardshort with double button closing
- Super stretch fabrics for the ultimate in flexibility, 90 % polyester and 10% "Spandex"
- Lightweight and fast drying
- Back pocket with mesh water drain panel
- This short is a perfect match with the Rash Guard Flash (see page 49) 310012007

06. Boardshort Stitch

Size: XS, S, M, L

- Short model boardshort with double button closing
- Lightweight and fast drying fabrics
- Back pocket with mesh water drain panel
- This short is a perfect match with the Rash Guard Stitch (see page 49) 310111003

07. Walkshort Ladies

Size: S, M, L, XL, XXL

- 100% stonewashed cotton
- With slit side pockets and back pockets 310111011

Size chart on page 144-145



CASUAL WEAR

01.



02.



03.



01. T-shirt Click

Size: S, M, L, XL, XXL

- 100% soft, pre-shrunk cotton • Also available in youth sizes, see page 60-310012020

02. T-shirt Austin

Size: S, M, L, XL, XXL

- 100% soft, pre-shrunk cotton 310012021

03. T-shirt Region

Size: S, M, L, XL, XXL

- 100% soft, pre-shrunk cotton 310012019

04. Polo Rogue

Size: S, M, L, XL, XXL

- High quality soft, pre-shrunk cotton • Embroidered logo details 310012033

05. Polo Grey

Size: S, M, L, XL, XXL

- High quality 100% soft pre-shrunk cotton • Embroidered logo details 310811004

06. Polo Long Sleeve Encore

Size: S, M, L, XL, XXL

- High quality soft, pre-shrunk cotton • Embroidered logo details 310012037

04.



05.

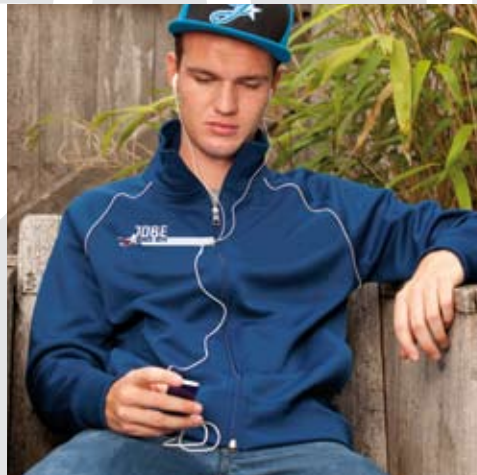


06.





01.



02.



03.





04.



05.



06.



07.

01. Hooded Sweater

Size: S, M, L, XL, XXL

- 80% cotton and 20% polyester • Embroidered logo details
 - Front pocket
- 310111002

02. Icon Jacket

Size: S, M, L, XL, XXL

- High quality sportive jacket • 2 front pockets
- 310012029

03. Technical Jacket

Size: S, M, L, XL, XXL

- High quality sportive jacket made out of wind- and waterproof fabric • fleece lining for extra warmth • 100% taped seams
 - waterproof front zip • detachable hood • velcro cuffs • elastic bottom hem • mp3 pocket inside
- 310012031

04. T-shirt Ladies X

Size: XS, S, M, L, XL

- 50% Cotton 50% polyester, soft pre-shrunk fabric
- 310012023

05. Polo Ladies

Size: S, M, L, XL, XXL

- High Quality 95% soft pre-shrunk cotton and 5% elasthan
 - embroidered logo details
- 310012024

06. Tank Top Ladies Drops

Size: XS, S, M, L, XL

- 55% Cotton 45% polyester, soft pre-shrunk fabric
- 311411001

07. T-shirt Ladies Eye

Size: XS, S, M, L, XL

- 55% Cotton 45% polyester, soft pre-shrunk fabric
- 310811003



01.



02.



03.
Y1.1



03.
Y2.1

01. Jobe Cap Youth

- Size: Universal
- Standard flexfit cap for kids
- 310111019

02. T-shirt Youth Click

- Size: S, M, L, XL, XXL
- 100% soft, pre-shrunk cotton
- 310012026

03. Floatable Sunglasses Youth

- Floatable frame so you will never lose your sunglasses in the water again
- UV 400 protection
- Polarized lens
- Unique designs for kids
- Comes with cleaning bag
- Y1.1: 421009001 - Y2.1: 420409001



04.



05.



06.



07.



08.



09.



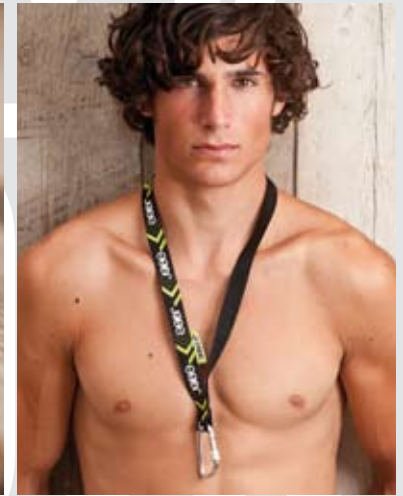
10.



11.



12.



13.

04. City Cap
Size: S/M, L/XL
• Flexfit cap with flat visor
310012027

09. Visor Hat
Size: Universal
310012035

05. Jam Cap
Size: S/M, L/XL
• Flexfit cap with flat visor
310012030

10. Beanie Men
Size: Universal
310011002

06. Sync Cap
Size: S/M, L/XL
• Standard flexfit cap
310012032

11. Beanie Ladies
Size: Universal
311311001

07. Retro Cap Ladies
Size: Universal
• Flexfit cap for ladies
310111013

12. Watch
• Chronograph watch with rubber strap • Water resistant (5 ATM) • Case Diameter: 44MM
360110002

08. Ozy Hat
Size: Universal
310012036

13. Keycard Deluxe
• With Aluminum hook
360811004



AUSTIN HAIR
4th US Pro Tour 2010



CHRISTIAN KOESTER, CK
3 times British National Cable Champion

JOBEPRO RIDERS



MAXINE SAPULETTE
WWA World Cable Champion 2010



DECLAN CLIFFORD
British National Cable Champion 2011



SJORS VAN DE KERKHOF
Jägermeister Wake Riderz Champion 2009



KIRSTEEN MITCHELL
IWWF World Cable Champion 2010



R

R

R

R

R

WAKEBOARD SPECS



Continuous Rocker

Smooth, continuous arch. A "continuous rocker" has a smooth curved shape. Wakeboards with a "continuous rocker" provide fast, smooth rides and allow you to hook up turns more easily. You can generate a lot of speed on a "continuous rocker" wakeboard. Speed and a very predictable "pop" (height) when you hit the wake will shoot you further out into the flats. "Continuous rocker" wakeboards are great for carving, especially on those glassy-smooth mornings. Difference in rocker/fin reflects variation in size



3-stage Rocker

Angled with a "flat spot" in the center. A wakeboard with a "3-stage rocker" features three distinct planes on the bottom of the board. A "3-stage rocker" causes your wakeboard to respond with more "pop" (height) when you hit the wake. Boards with a "3-stage rocker" have a flat spot which makes the impact of landings intense and gives a slight sluggish (slow) feeling after landing. One thing is for sure, you're more stable. Difference in "rocker"/fin reflects variation in size



Hybrid Rocker

The "hybrid rocker" features a blend of "continuous" and "three-stage rockers" and brings the best of both worlds: fast pop and consistency. The aggressiveness of the "3-stage rocker" on the edge and the stability of the "continuous rocker" in the center of the board is the perfect combination of "rockers" that makes these boards fast and stable. Difference in "rocker"/fin reflects variation in size



6" Insert Setup

The new standard for our wakeboards since 2010. Makes the board compatible with bindings with 6" plates



8" Insert Setup

Makes the board compatible with our basic wakeboard bindings with 8" plates like the Static and the Strike bindings



Bullet Reinforcement

Durable built in ABS/plastic reinforcements inside the fins and the "rails" of the board to help the board sustain and live better thru "rail grind" and other park use. ABS is a very strong and durable solid thermoplastic



1.0" Polycarbonate/Plastic Fins

React quickly and provide a better overall "edge hold". Cable park obstacle friendly



1.3"/1.7" Plastic Fins

A quick releasing and reacting profile, better edge hold and a smooth release



Flat Top Tech

A completely flat top for a "snappier" more lively board to binding feel



Rolled Edge

Helps to prevent the board from splitting at the edges. The rolled edge positions the seams of the edges at the top-side of the board instead of at the base. This way you can hit "kickers" and "sliders" without any worries. Furthermore, it makes the board sit higher in the water for more speed



Hybrid Edge

"Rolled edge" at the midsection which blends into sharp end rails towards the tip and tail for more "edge hold" and aggressive cuts. The "rolled edge" midsection allows for easier sliding over "edge" and prevents damage to the edges



PTEX Grind Base

Indestructible protective base laminate built to resist much more damage by "sliders" and "kickers" than any other regular wakeboard bases. In comparison to others, this base makes the difference on "sliders" and "kickers" and is amazingly fast on obstacles



Molded In Fins

Integrated fins that improve the board's grip in the water and provide stability when landing



Thinner Profile

Less swing weight equals more control and speed



Thinner and wider profile

A lighter more responsive ride with more surface area for improved control

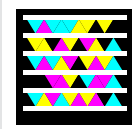
Warranty on all wakeboards will be cancelled if used on obstacles such as "kickers" and "sliders".





RIDER: AUSTIN HAIR

RIDER: AUSTIN HAIR



01.

01. Austin Series

Size: 133, 137, 141



Together with US Pro rider Austin Hair we've made this striking "graphic". Austin Hair is a world-class professional wakeboarder and wakeskater and has been competing on the Pro Wakeboard Tour since 2005. The Austin Series is one of our top pro line boards but generally any rider can "shred rails" with it • The Austin series delivers speed, "pop", and control • The unique flex lay-up helps retain "snap" and "pop" over time • It's got a squared tip and tail and four "reinforced molded" fins, which allow a steady press on any type of "rail" • The "bullet reinforcement" makes it super strong, "grind ready" and it also helps to improve the board's grip in the water and provides landing stability • 2.6"/2.7"/2.8" Explosive and fast "hybrid rocker": Our secret recipe for speed, balance and "pop" 270012009

Size chart & specifications on page 144-145



01.

01. Click Series

Size 139, 143



Christian Koester has been Jobe's showpiece for years. With his unique wakeboarding style CK has developed into one of the best cable park riders in the world. In close cooperation with Christian Koester himself, Jobe has developed a "shape" and "graphic" which matches perfectly with his wishes. He wanted a fast, stable board with the perfect hold on water • With that in mind we designed a "hybrid rail" that doesn't go all the way down the side but turns into a sharp edge towards the "tip" and "tail" • In combination with the 0.6"/0.7" high "molded in" fins at the end of the extra wide tip and tail, this board has everything you need for a perfect release, plenty of grip and an explosive "pop" off the wake • The 2.6"/2.7" "continuous rocker" makes the board very fast
270812001

Size chart & specifications on page 144-145





RIDER: CK (CHRISTIAN KOESTER)





01.

01. Brigade Series

Size: 134, 139



- This board still has the only true "flat top deck" in the industry and is now built to take more abuse around the obstacles than ever before
- Explosive "rocker" that carries a lot of speed into the wake and out to the flats, delivers smooth carving with a crisp turn in
- Super clean bottom makes landings softer than ever; less is more
- The "flexi" attitude of the Brigade allows riders of all levels to "shred rails" and press to their heart's content
- 2.45"/2.55" "Hybrid Hard Rocker": Big clean "pop" when you want it, without having to stomp out a hard landing
- Four 1.0" polycarbonate fins

270012003

Size chart & specifications on page 144-145

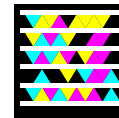


RIDER: DECLAN CLIFFORD





RIDER: CK (CHRISTIAN KOESTER)



02.

02. Guerrilla Flex Series

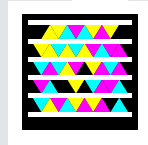
Size: 137, 142



- Jobe's modified new indestructible "slider board" series for intermediate to advanced cable park riders • This year with more flex than before due to a thinned out profile, especially at the tip and tail • The hybrid wood & foam "core" makes a perfect combination of flex and stiffness • Flex-zones for clean and stylish "nose" and "tail presses" on rails, but still stiff enough for solid landings after big "kicker" hits • The durable "PTEX Grind Base" minimizes damage by "sliders" and "kickers" which allows for some serious "rail & kicker" sessions • The 100% "flat base design" ensures that the board will not snag on "rails & kickers" • Adjustable 0.6" four nylon fin design
- Each fin contains 6 holes that allow the fin to be moved forward or back to meet your demands • 2.32" / 2.52" Subtle "3-stage rocker" with a strong ABS sidewall

270012004

Size chart & specifications on page 144-145



01.

01. Vanity Series

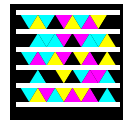
Size: 131, 136, 141



- With Jobe Rider Sjors van de Kerkhof's approval on the "graphic", it's one of the most stable, fun, and easy to ride boards we have ever had the pleasure to design
- The Vanity has a long history and still proves itself as being a top favorite for many of our team riders and fans
- The "continuous rocker" makes the board fast, but still gives you a controlled "kick" off the wake
- This year with a wider stance for more control and stability
- Responsive and friendly shape for riders of all levels, whether you're a pro or a novice you will feel like a pro on this ride
- The four "molded in" fins add a lot of stability during takeoff and landing
- 0.5"/0.6"/0.7" deep "molded in" fins
- 2.6"/2.7"/2.8" "Progressive continuous rocker"

270012007

Size chart & specifications on page 144-145



02.

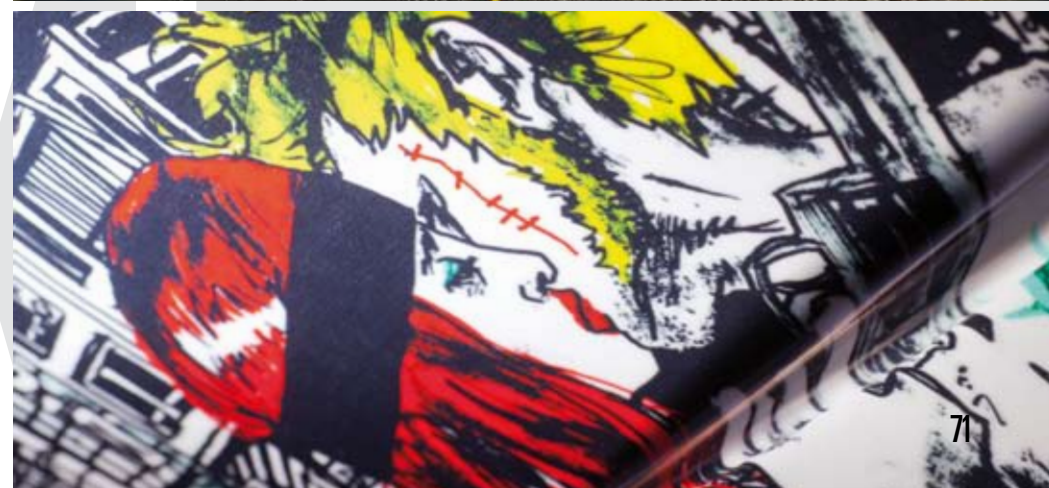
02. Artist Series

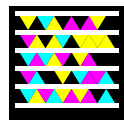
Size: 132, 137, 142



• The “graphic” for this year’s Artist Series is created by the German artist Gregor Dashuber, a Berlin-based graphic artist and 2D animator. His raw and distinctive drawing style has never been seen before in the wakeboard scene, which makes this series rather exceptional • The Job Artist Series is built to provide a clean “pop” off the wake and a well-balanced ride • With four moderate “molded in” fins providing traction and stable feeling, the Artist is sure to provide a relaxed ride on the water to riders of all levels • Solid overall feel on the water that will relax your style • 2.55”/2.65” “3-Stage Rocker”: The shape allows a big “pop” as well as soft landings • The Artist is a very playful board with big “rocker” lines
270012002

Size chart & specifications on page 144-145





01.

01. Region Series

Size: 139, 143



- With sharp rails in the "tip" and "tail", the Region edges hard and fast once on edge • The "hybrid rail" helps it sit a bit higher to carry more speed into the wake and release cleanly • More profiled "flat spot" towards the center helps soften landings and stable feeling when you "pop" off the wake • 2.7"/2.8" "3-Stage Rocker": "Pop" the old fashioned way, big, up, and still with a soft landing • Four 1.0" polycarbonate fins allow you to stay tuned while you edge into the wake

270412001

Size chart & specifications on page 144-145

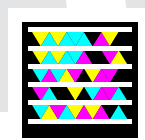


RIDER: DECLAN CLIFFORD





RIDER: DECLAN CLIFFORD



02.

02. Republik Series

Size: 127, 135, 140



• With a thinned out and wide profile the Republik has more surface area which gives you a stable feeling and a clean soft landing • Unique small "molded in" fin design allows the rider a controlled fast approach with an explosive "pop" • Clean bottom design with slight cups to the rails and no gimmicks • 2.6"/2.7" "3-Stage rocker": A clean approaching line with an explosive boot off the wake
270812002

Size chart & specifications on page 144-145

RIDER: MAXINE SAPULETTE



01.

01. Max Series
Size: 131, 136



Maxine Sapulette is by far the world's best female cable rider. She is a Jobe "team member" since a long time and has a name for being totally different than all other female riders. Maxine is absolutely not a girly girl, making her "pro series" not an average woman's board. Maxine is tremendously stylish, ambitious and distinctive. Her character perfectly matches the Jobe brand and especially the Jobe Max Series • The Max Series is not just another male shape with a girls graphic; but a Vanity with a unique designed torsional "flex lay-up" specially made for female riders • The aggressive "continuous rocker" line gives the board a strong "pop" and makes the shape very fast • Responsive and friendly shape for riders of all levels, whether you're a pro or novice you will feel like a pro on this ride • The four "molded in" fins add a lot of stability in takeoff, landing and smooth transitions into the wake • Four 0.5"/0.6" "molded in" fins • 2.6"/2.7" Fast "continuous rocker".
270012006

Size chart & specifications on page 144-145

WAKE BOARDS LADIES

02. Isis Series

Size: 132, 137



• The Isis is a uniquely shaped board built to offer a well balanced ride. A slightly "hybrid rail" across the center to break up some turbulence on the water, combined with a softer specific flex, make it the perfect board for first-time and intermediate riders as well • Provides a clean "pop" off the wake • With four moderate "molded-in" fins providing the traction and stable feel needed, the Isis is sure to provide a relaxed ride on the water to riders of all levels • 2.45"/2.55" "3-Stage rocker": "Pop" the old fashioned way, big, up, and still with a soft landing
270012005

03. Pearl Series

Size: 127, 135



• Board for female riders of all levels with a more relaxed feel and easier water starts • The "wider profile" along with its unique sharp "molded in" fin design gives the rider a controlled feeling with a stable and soft landing • The 2.6" "3-Stage Rocker" helps you get nice smooth "pop" off the wake • The Pearl features a "thinner profile" for maximum weight reduction and better flex.
270012001



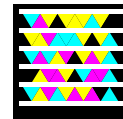
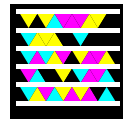
02.



RIDER: KIRSTEEN MITCHELL



03.



Size chart & specifications on page 144-145





01.



01. Republik Package

Republik + Republik Bindings + Transp. Wakeboard Bag
 Size Republik Board: 127, 135, 140 - Size Republik Binding: JR, 5/8, 8/11, 11/14



- With a thinned out and wide profile the Republik has more surface area which gives you a stable feeling and a clean soft landing
- Unique small "molded in" fin design allows the rider a controlled fast approach with an explosive "pop"
- Clean bottom design with slight cups to the rails and no gimmicks
- 2.6"/2.7" "3-Stage rocker": A clean approaching line with an explosive boot off the wake

Republik 127 + Republik Bindings: 278812007
 Republik 135 + Republik Bindings: 278812008
 Republik 140 + Republik Bindings: 278812009

Size chart on page 144-145



WAKE BOARD PACKAGES



02.
TRX



02.
Logo series



03.
WINNER DESIGN
CONTEST - Tag



03.
Cult

02. TRX & Logo Series Packages

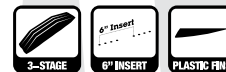
TRX 138 + Maze Bindings + Transp. Wakeboard Bag
 Logo Series 138 + Maze Binding + Transp. Wakeboard Bag + Blue Star Cap
 Size Maze Binding: Standard



- Well balanced rides with stability being provided by a long based "molded in" fin style with tremendous hold
 - The outer "molded in" fins allow for stability on the water and the optional center fins offer extra traction when you want it • Add this to a "progressive continuous rocker" and you get a board which allows smooth carving and has a predictable "pop" • These wakeboards are sure to improve riding ability with their strong tracking, consistent "pop" off the wake, and quick transitions "edge" to "edge" • 0.9" deep "molded in" fins • 2.8" Subtle 3-stage "rocker" • "V" kinked" bottom
- TRX 138 + Maze Bindings: 278812012
 Logo Series 138 + Maze Bindings: 278812005

03. Tag & Cult Packages

Tag 138 + Native Bindings + Wake 2 Wake Combo Advanced EVA + Transp. Wakeboard Bag 142 Jobe
 Size Native Binding: 5/8, 8/11, 11/14
 Cult 138 + Maze Bindings + Package Wakeboard Rope + Transp. Wakeboard Bag
 Size Maze Binding: Standard



- The "graphic" for the Tag wakeboard is designed by the "wakeboard design contest" winner Rens Prins from the Netherlands • The steady and effortless Cult and Tag rides have a unique shape exclusively designed for Jobe • You won't see the unique vented channels and super sharp edges on any other wakeboard, they allow for strong "edge hold" and great stability and "pop" • Perfect board for beginner to intermediate riders • 2.2" subtle "3-stage rocker"
- Tag 138 + Native Bindings: 278812003
 Cult 138 + Maze Bindings: 278812001



01.
Saint



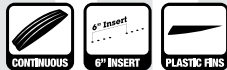
01.
2020



02.

01. Saint & 2020 Packages

Saint 141 8" spread + Strike Binding Red 8" Plate + Package Wakeboard Rope + Transp. Wakeboard Bag
 Size Strike Bindings: Standard, XL
 2020 (twenty twenty) 142 + Maze Bindings + Package Wakeboard Rope + Transp. Wakeboard Bag
 Size Maze Binding: Standard



- The easy to ride 2020 and Saint wakeboards are designed to help teach new riders the fundamentals of wakeboarding while providing a super fun time with family and friends • With a wider and rounder profile than most other boards, deep water starts and smooth carving are a snap • These features along with a smooth "continuous rocker line", help beginners with the smoothest of transitions into the wake and stable "pops" coming off of it • The "convex bottom" improves the riders' confidence due to its more forgiving feel • 2.3" "continuous rocker": a consistent, smooth reliable transition into the wake each and every time • The "wider profile" base promotes learning and adds stability when getting out of the water • The dual "venturi stabilizing tunnels" help hold the boards edge into the wake for additional tracking and stability
 Saint 141 + Strike Bindings: 278812004
 2020 141 + Maze Binding: 278812006

02. Brooklyn Package

Brooklyn 139 + Strike Binding Red + Package Wakeboard Rope + Transp. Wakeboard Bag
 Size Strike Bindings: Standard, XL



- The Brooklyn is an ideal board for chilled out carving sessions • 2.2" subtle "3-stage rocker" • The foam "core" is reinforced with fiberglass, Formica and stringers • One of the two wakeboards in our range with a lightweight injection molding construction • Two 0.9" plastic centre fins • Perfect board for beginner to recreational riders
 Brooklyn 139 + Strike Bindings: 278812002



03.
+ Native Bindings

03.
+ Maze Bindings

03. Ascend Package

Ascend 132 + Native Bindings + Package Wakeboard Rope + Transp. Wakeboard Bag
 Size Native Binding: 5/8, 8/11
 Ascend 132 + Maze Bindings + Package Wakeboard Rope + Transp. Wakeboard Bag
 Size Maze Binding: Standard



- The Ascend is a well-balanced wakeboard for youngsters which provides a clean "pop" of the wake
- The playful yet relaxed characteristics make this board perfect for young riders
- The Ascend is a reliable board on which youthful riders can build their confidence but on the other hand can step their game up as well
- The four moderate "molded in" fins provide traction and a stable feeling
- 2.45" "3-Stage Rocker" allows a big "pop" as well as soft landings

Ascend 132 + Native Bindings: 278812014
 Ascend 132 + Maze Bindings: 278812013

Size chart on page 144-145

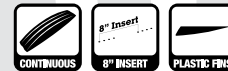


04.
+ Junior Bindings

04.
+ Access Wake Sandals

04. Jinx Junior Package

Jinx Junior 128 + Junior Wakeboard Binding + Junior Wakeboard Rope w. Handle + Transp. Wakeboard bag
 Size Junior Wakeboard Binding: PCS.
 Jinx Junior + Access Wake Sandals
 Size Access Wake Sandal: XS/S



- Our uniquely shaped and newest junior wakeboard!
- The four base channels and subtle "molded in" fins allows for more grip during carving
- The foam core is reinforced with fiberglass, formica and stringers
- One of the two wakeboards in our range with a lightweight injection molding construction
- 2.6" continuous rocker
- Two 0.9" plastic centre fins for a stable feeling
- Solid board for beginning juniors

Jinx Jr. 128 + Junior Wakeboard Binding: 278812011
 Jinx Jr. 128 + Access Wake Sandals: 278812010

WAKEBOARD BINDING SPECS



6" Plate

The standard for our high-end bindings. 6" binding (base) plates are standard on most of our wakeboard bindings since 2010. The 6" binding plates are lighter, stronger and have less torsional flex. The new 6" binding plates coupled with the "6" insert setup" on a wakeboard gives you unlimited stance options



8" Plate

Makes the binding compatible with our "8" insert setup" wakeboards like the Brooklyn and the Jinx



Comfort Liner

Custom formed to fit the contours of your foot for the maximum in comfort, fit and finish. Three levels and blends of foam covering help the "liner" conform to your foot like it is one with it



Easy Wrap Liner

Untie the binding and experience how easy this "wrap liner" opens up when you slide your feet into the binding. Once tightened the "wrap liner" conforms to your foot and gives maximum support and fit. The construction and foam layers are composed to make this "wrap liner" stiffer than the "Comfort liner"



Articulated Heel/Ankle Assembly

Makes the upper part of the bindings move along easier with your lower legs, while still giving all the necessary support you need



Dual Lacing

Tighten and loosen the laces on the upper ankle section and the lower foot section independently



Velcro Straps

Three 4.5 cm/1.8" heavy duty Velcro straps. Allow fast entry and exit. Significant alternative if you're a cable park rider and you have to get in and out of your bindings quite some times during a session



Easy Attach Lace Holder

Attach the laces to the binding fast and easy with a press stud system to prevent them from getting in the way during the ride



Achilles Kidneys

Locks your Achilles in place and helps keeping your ankle positioned properly in the back of the binding to ensure proper foot placement and support



Stretch Panel

The flexible panel on the heel allows for all the necessary extra movements you need during a ride once you're wrapped into a rigid binding



Webbing Lace Pull Loop

Allows you to clinch down the laces to be completely locked in



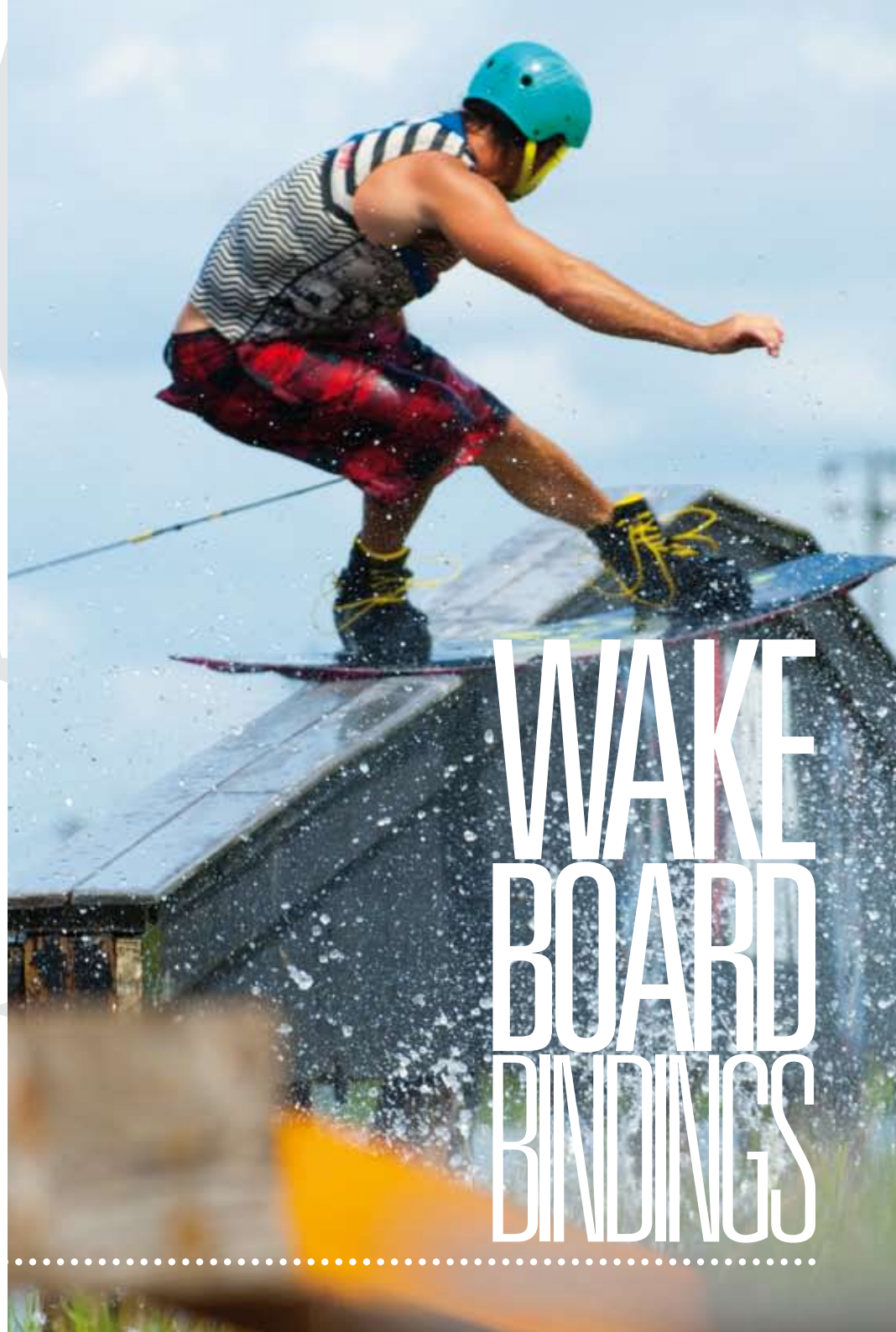
Dual Density Footbed

Soft ergonomic shaped footbed which absorbs the biggest blows on the water but at the same time gives you all the comfort you need



Adjustability

For a large range of various foot sizes





01.

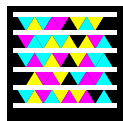
01. Austin Bindings

Size: Size: 4.5/5, 6, 7/7.5, 8/8.5, 9, 10, 11/12



• With Austin's approval on the design we have developed this newest and most aggressive looking binding in our binding range • This isn't our stiffest binding, but it combines support with flex due to a custom designed "comfort liner" and the "articulated heel/ankle assembly" which allows for "edging power" and more response from your board • The tight fitted "comfort liner" makes you feel one with the binding • Add features such as the "dual lacing system", "stretch panel" and a "dual density" footbed and you have a serious high end binding to take on the competition
390012005

Size chart on page 144-145



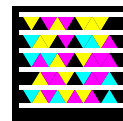
02.

02. Click Bindings

Size: 4.5/5, 6, 7/7.5, 8/8.5, 9, 10, 11/12



• Together with CK we developed this all new impressive Click binding • It's the most solid and highest binding in our range, once you've locked both laces all the way up you will feel secure and in control • To compensate the stiffness of this high binding we added unique flex zones at the ankle and at the top of the heel as well, which allows for all the movement you need during a ride • The rigid back design helps the wakeboard react as quickly as it can • The perfectly tailor made "comfort liner" puts the cherry on the pie and makes this a great and supportive binding
390812001

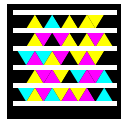




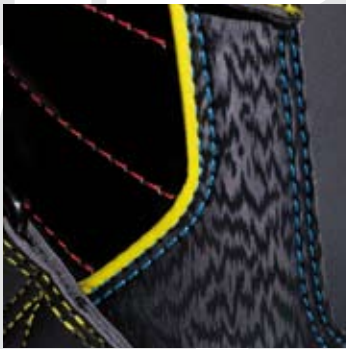
01.

01. Brigade Bindings

Size: 4.5/5, 6, 7/7.5, 8/8.5, 9, 10, 11/12



• Our most rigid binding in the range with the fastest entry and exit times due to the "easy wrap liner" and the three heavy duty Velcro straps • This new "easy wrap liner" is rather stiff and really locks your foot in the binding once the straps are tightened, this allows for faster turns and no delay for aggressive riders • The Velcro straps make sure that you have enough support and feel tuned in on the water • The flex zones on the ankle area and on the heel bring all the necessary flex you need into this strong and rigid binding • Expect all other necessary bells and whistles to be featured on this high end binding
390012003



02.

02. Vanity Bindings

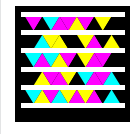
Color: Black, White - Size: 5/8, 8/11, 11/14



- The Vanity binding has gone through a "great makeover" due to its new flamboyant looks and the heavy duty Velcro straps which have replaced the laces
- Still it's designed to meet the demands of the open toe high end rider who doesn't want to switch to a closed toe binding
- The Velcro straps allow fast entry & exit and make sure that you have enough support and feel tuned in on the water
- The flex zones on the ankle area and on the heel bring all the necessary flex you need
- Add features such as the "comfort liner", "stretch panel" and a "dual density" footbed and you have a serious open toe high end binding

Black: 390012004 - White: 390112002

Size chart on page 144-145



02.



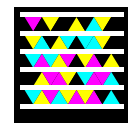
01.

01. Deluxe Bindings

Size: 4.5/5, 6, 7/7.5, 8/8.5, 9, 10, 11/12



• We took the Deluxe back to the drawing board and created a one-piece constructed closed toe binding which suits all riders from beginner to pro • The improved durable lacing system allows easy locking & loosening of the laces and a snug fit in combination with the "webbing lace pull loop" • The clean black and white overlay design makes this binding look hot on every wakeboard • Although it's still one of our lowest cut bindings, we've made the binding slightly higher for a bit more support at the heel, but it lets you poke out your grabs with ease • With the "dual density" footbed, easy attach "lace holder" and super comfy "inner liner" you have a genuine wakeboard binding which lasts
390012002



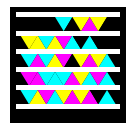
02.

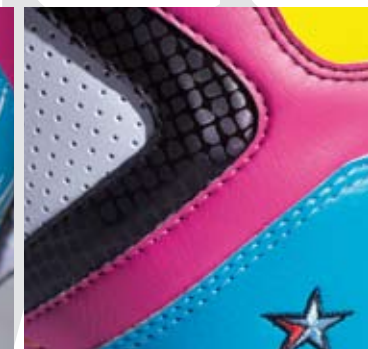
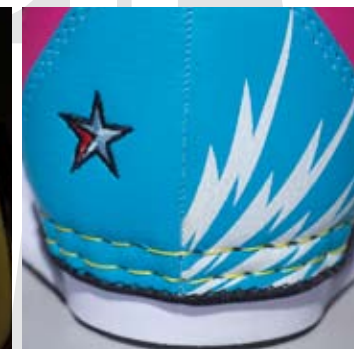
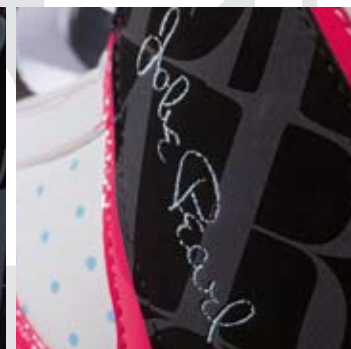
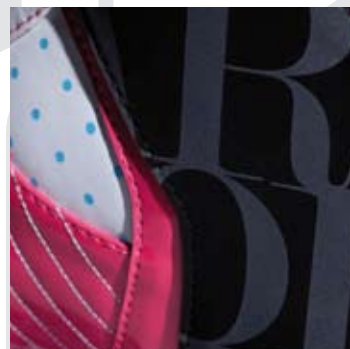
02. Republik Bindings

Size Republik: Junior (4.5/7.5), 5/8, 8/11, 11/14



• Why change something that works? With pride we present the Republik bindings based on the durable and reliable former Native and Riot bindings • Still one of the lightest, most supportive and comfortable bindings on the market today • No gimmicks but just a pure and simple binding with all the necessary features you need for a great ride on the water
Republik: 390812004
Republik Junior: 390812004





03.

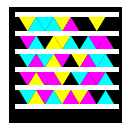
03. Pearl Bindings

Size Pearl: 5/8



- Why change something that works? With pride we present the Pearl bindings based on the durable and reliable former Native and Riot bindings
- Still one of the lightest, most supportive and comfortable bindings on the market today
- No gimmicks but just a pure and simple binding with all the necessary features you need for a great ride on the water
- The Pearl has a custom designed "comfort liner" to fit women's feet perfectly

390012001



04.

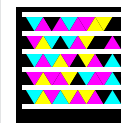
04. Max Bindings

Size: 6/7, 8, 8.5/9.5



- With Maxine's approval on the cool old school sneaker design we have developed this all new closed toe binding for ladies
- The improved durable lacing system allows easy locking & loosening of the laces and a snug fit in combination with the webbing lace pull loop
- Although the binding has a one-piece construction, it still has the flexibility to tweak out moves
- The overlay design is a true match with the wakeboard graphic design
- Also equipped with the "dual density" footbed, "easy attach lace holder" and an "inner liner" designed for women's feet

390012001



Size chart on page 144-145



01.



02.



03.

01. Conquer Bindings

Size: 6/7, 8, 9, 10, 11, 12/13



• Jobe's first flexible low-cut profile closed toe binding designed with the easiest of entry and comfort • The softest and most comfortable shell surroundings available • Solid overall feel, control, and comfort allows riders of all levels to carve out a quick session on the water and still provide the stiffness and performance you would expect in a closed toe binding
390011002

02. Static Bindings

Size: Mini, Standard, XL



• Classic and comfortable binding for riders of all levels • Designed for virtually every rider with any foot size that is looking for a comfortable and easy adjustable setup to encounter all water terrains • The comfortable fit of the Static makes the rider focus on a longer session and the progression riding a wake can bring • A confidence building boot that multiple riders can share with a wide range of foot sizes
390812003

03. Strike Bindings

Size: Standard, XL



• The adjustability and easy entry make the Strike binding unique in its price range
• Because of the one piece overlay this binding can be used by a wide variety of users
• The front lace is easy in use and perfect to tighten the bindings to your wishes
390810001

Size chart on page 144-145

04. G-Tool

• Small handy tool to setup your gear • Stubby ratchet handle • 5 different bits
380200005

05. Lava Juice

Size: 160z/0,48L - 1280z/3,84L

• World's leading brand in binding slime for all binding use • Not harmful to the environment
361101002 160z/0,48L - 1280z/3,84L



04.

05.
160z/0,48L
1280z/3,84L



01.



02.



01. Savage Wakeskate

Size: 43"/109 cm

- Subtle ribbed EVA deck • 9 layer maple wood laminate • Weight 3.6 KG/7.9 LBS • "Continuous rocker" • PU-coated base graphic • Two 0.9" plastic fins

270011009

02. Exceed Wakeskate

Size: 41"/104 cm, 43"/109 cm

- The Exceed wakeskates have a new shape with high concave EVA top decks as an extra feature • The concave deck gives you more control and a stable feeling during your skate session • Subtle ribbed EVA top layer • 14 layer maple wood laminate • Weight 41": 4.4 KG/9.6 LBS • Weight 43": 5.6 KG/12.3 LBS • "Continuous rocker" • PU-coated gloss finished base graphic • Two 0.9" fins

270011010

03. Union Wakeskate

Size: 43"/109 cm

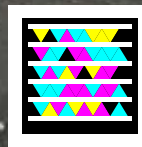
- A completely new design, the Union wakeskate has a fully wooden concave shape • The concave deck gives you more control and a stable feeling during your skate session • Grip tape deck • 25 layer maple wood laminate • Weight 5 KG/11 LBS • "Continuous rocker" • PU-coated gloss finished base graphic • Two 0.9" fins

270011011

Size chart & specifications on page 144-145



03.



WAKE SKATES



KNEE BOARDS



01.



01.



02.



03.



04.



05.



06.

HandleHook



01. Prophecy & Tempest

- The combined wider based "tip" design and "molded in" fins help make it a fun and comfortable board for all users
- The "molded in" fins provide added stability, yet still allow maneuverability
- Kneeboarders of all levels will appreciate the stability and advanced riders will like the extra width under the knees which helps soften landings and promote spins
- The Tempest has an ergonomic seat pad for added comfort and a "single locking strap"
- The Prophecy has extra high end features like a "dual density" ergonomic seat pad and a "double lock strap"

Prophecy: 250012003
Tempest: 250012001

02. Chilipepper

- Designed for today's beginner to intermediate level kneeboarders
- "Swallow-tail design" helps to initiate turns and promote spins
- Thin & wide profile with "twin-tip design" enables it to cut deeper and harder into the water while on edge
- Ergonomic seat pad for added comfort and a "single locking strap"

250211001

03. Shock

- The "parabolic twin tip" ensures maximum lift and smooth transitions during tricks
- Beveled edge for a smooth, fluid and forgiving ride
- Strong 3" neoprene padded webbing "double locking strap"
- Includes a "shock-strap" which absorbs big blows on the water
- The "handle-hook" allows beginning riders to get up easy and quickly and then automatically retracts flush with the deck when not in use
- Ergonomic seat pad with deep knee wells for added comfort

250011001

04. Justice

- "Swallow-tail design" helps to initiate turns and promote spins
- Beveled edge for a smooth, fluid and forgiving ride
- Strong 3" neoprene padded webbing "single locking strap"
- Includes "shock-strap" which absorbs big blows on the water
- The "handle-hook" allows beginning riders to get up easy and quickly and then automatically retracts flush with the deck when not in use
- Ergonomic seat pad with deep knee wells for added comfort

250012004

05. Justice Kneeboard Package

Justice Kneeboard + Vest + Kneeboard Combo Handle + Transp. Bag
258812004

06. Shock Kneeboard Package

Shock Kneeboard + Universal Vest Red + Kneeboard Combo Handle + Transp. Bag
258812002

07. Shock Strap Only

- Fits on any kneeboard strap
- Turns your standard kneeboard strap into a tight belt which absorbs hard blows on the water

250807001

08. Double Lock Strap 3"

250805001

09. Single Lock Strap 3"

250805002

Size chart & specifications on page 144-145

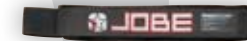
07.



08.



09.





01.



02.



03.



04.



05.



06.



07.

01. Virtue

Size: 67"/170 cm, 59"/150 cm

- Beginner - intermediate deluxe injection molded combo pair
- Can be used as either combo skis or as an entry-level slalom ski
- Foam lined adjustable horseshoe bindings with trigger adjustment
- Tunnel bottom for more stability
- Bright yellow fins for visibility
- Has inserts for a "stabilizing bar"
- UV-coated gloss finish

02. Pride

Size: 67"/170 cm

- Beginner - intermediate injection molded combo pair
- Can be used as either combo skis or as an entry-level slalom ski
- Foam lined adjustable horseshoe bindings with trigger adjustment
- Tunnel bottomed for more stability
- Bright yellow fins for visibility

03. Allegre

Size: 67"/170 cm, 59"/150 cm

- Beginner - intermediate injection molded combo pair
- Can be used as either combo skis or as an entry-level slalom ski
- Foam lined adjustable horseshoe bindings with trigger adjustment
- Tunnel bottomed for more stability
- Bright yellow fins for visibility

04. Silk Ladies

Size: 59"/150 cm

- Beginner - intermediate injection molded combo pair for ladies
- Can be used as either combo skis or as an entry-level slalom ski
- UV-coated gloss finish
- Foam lined adjustable horseshoe bindings with trigger adjustment
- Tunnel bottomed for more stability
- Has inserts for a "stabilizing bar"
- Bright yellow fins for visibility

05. Tail Weights

- Easy to mount on the tail of a ski with a 3-screw fin system
- The tail of your ski will drop deeper in the water to make water starts easier and consistent

2 PCS: 200805001

06. Stabilizing Bar

Size Standard for 62", 65" and 67" combo/slalom skis - Size Junior for 59" combo skis

- Use this bar between your skis for a stable and predictable ride
- Easy for deep water starts

Standard: 200805002 - Junior: 200805003

07. Ski Flag Flame Orange

Size: 200 x 14 cm
210305001

Size chart & specifications on page 144-145

COMBO SKIS



08.

08. Hemi Series

Size: 59"/150 cm, 62"/157 cm, 65"/165 cm
• Beginner - intermediate injection molded combo pair • Can be used as either combo skis or as an entry-level slalom ski • Wider "tip" profile and double v bottom for additional stability with deep water starts • Great ski to teach people how to ski and provides added confidence to skiers of all levels • Foam lined adjustable horseshoe bindings with trigger adjustment • Bright yellow fins for visibility • Has inserts for a "stabilizing bar" • UV-coated gloss finish
200012002



01.



02.



03.



04.



05.



06.



07.



08.

COMBOSKI PACKAGES

01. Classic Ski Package

Classic Combo + Universal Vest + Classic Handle + Display Box + Flag
Retro-styled classic combo ski package • Packed in a stylish carton display box
208812001

02. Pride Ski Package

Pride Combo + Universal Vest Yellow + Kick Off Rope + Transp Bag + Flag
208812003

03. Allegre 67" Ski Package

Allegre Combo + Universal Vest Red + Kick Off Rope + Transp Bag + Flag
208812005

04. Allegre 59" Ski Package

Allegre Junior Combo + Starter Vest Red + Kick Off Rope + Transp. Bag + Flag
208812006

05. Ladies Silk Ski Package

Silk Combo + Universal Vest Yellow + Kick Off Rope + Transp Bag + Flag
208812010

06. Hemi 65" Ski Package

Hemi 65" Combo + Universal Vest Yellow + Kick Off Rope + Transp Bag + Flag
208812009

07. Hemi 62" Ski Package

Hemi 62" Combo + Universal Vest Yellow + Kick Off Rope + Transp Bag + Flag
208812008

08. Hemi 59" Ski Package

Hemi 59" Combo + Universal Vest Yellow + Kick Off Rope + Transp Bag + Flag
208812007



09.

09. Hemi Trainers

Size: 46"/117 cm - Included: 'Learn to ski' DVD
 • The best way to teach kids how to ski • Detachable "stabilizing bar" • Wider profile bottom injection molded combo trainers for easier starts • Has inserts for a "stabilizing bar" • Foam lined adjustable horseshoe bindings with trigger adjustment • Bright yellow fins for visibility • Towrope with two handles • UV-coated gloss finish
 200012001

10. Buzz Trainers

Size: 46"/117 cm
 • Wooden combo pair for kids • Transparent coated sidewalls for best protection • Towrope with two handles • Adjustable horseshoe bindings with trigger adjustment • Bright yellow fins for visibility • Durable Formica top and base • Includes detachable "Stabilizing bar" between skis for stability
 200010003

Size chart & specifications on page 144-145



10.



11.

11. Buzz Ski Skimmer

Size: 48"/122 cm
 • Large wooden surface area for learning to ski the easy way • horseshoe bindings with soft footbeds • Durable Formica top and base • Transparent coated sidewalls for best protection • Towrope with two handles
 200010002



12.

12. Dolphi Trainer

Deflated size: 55" x 37"/140 x 94 cm
 The Jobe Dolphi Trainer is developed to learn children to waterski • Possibility to make a dry start • Easy to re-board from the water or ski platform • Inflatable seat which can easily be folded down when progressing to the next ski level • Inflatable floor • Full nylon cover/heavy duty PVC • 2 Flat webbing handles • 2 air chambers • 2 water drains • 2 speed valves • Rider capacity: 1 person • Including trainer handles, tow handle and 32ft PE line
 230511007



COMBO
 SKIS
 YOUTH





GUILLAUME DUVERNOY
7th at World Championships 2009



NANCY CHARDIN
2 times U21 Jump World Champion



BOJAN SCHIPNER
U21 Jump European Champion 2010



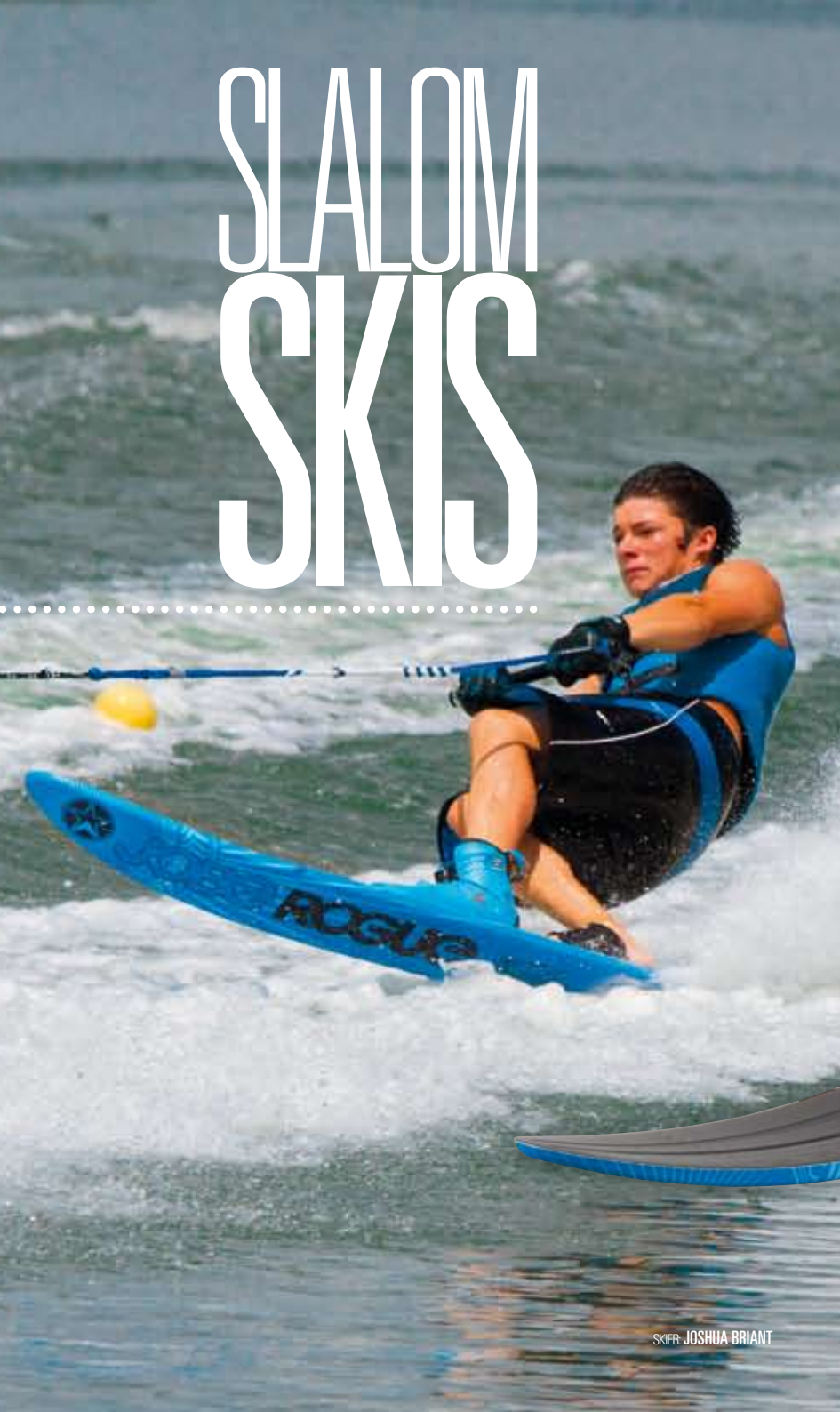
JOSHUA BRIANT
2nd Overall World Championship Junior 2010

JOBE PRO SKIERS

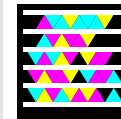


SKIER: GUILLAUME DUVERNOY

SLALOM SKIS



SKIER: JOSHUA BRIANT



01.

01. Rogue

Size: 65", 66", 67"

- "Pro Design" • Hybrid Concave • "5-Stage Rocker" • 100% Carbon Layup • PVC Machined "Core"
- "Sure lock" adjustable fin system • Level: Advanced to Professional • The Rogue features the Hybrid Concave design which transitions into a full edge to edge concave • This design helps the ski generate a smooth consistent edge change, whilst being able to maintain incredible angle through the wakes
- The lightweight PVC "core" and carbon graphite construction gives this ski incredible acceleration and speed, allowing the athlete to be wide and early for the next turn buoy • The contoured deck incorporates many high performance characteristics into the ski and allows variable flex patterns through the ski
- The incredible angle through the wakes will allow you to be wide and early for the next buoy, giving you all the time in the world to turn your "offside" into your "on-side"

260812001

Size chart & specifications on page 144-145

SKIER: NANCY CHARDIN



01.



SLALOM SKIS



02.



03.



04.



01. Encore

Size: 65", 67", 68"

- "Technique Design" • "Edge" to "Edge" Concave • "3-Stage Rocker" • 100% Carbon Layup • Polyurethane "Core" • "Sure lock" adjustable fin system • Level: Intermediate to Professional • The Encore is a lightweight full Carbon layup ski with new bevel designs for stability and directional feedback for the skier • The bevel was designed to hold the ski in position so that intense angle can be generated • The Encore is a full concave ski with two "flat spots", making it faster on the water • "Flat spots" are flat areas of the ski under the bindings • One "flat spot" is for stability in return phase and the other allows the ski to hook up faster out of the turn • The fore body design is to help the ski make a sharper, more efficient turn which requires less input from the skier • "Tail rocker" ("pivot to flat") allows the ski to complete the turn faster and more efficiently than ever before • An adjustable tournament fin comes assembled on the ski 260012006

02. Defiant

Size: 65", 67", 68"

- "Technique Design" • "Edge" to "Edge" Concave • "3-Stage Rocker" • Carbon Fiberglass Composite Layup • Polyurethane "Core" • "Sure lock" adjustable fin system • Level: Carving to Enthusiast • The Defiant is a slalom ski with a turning and stability rating second to none in its class • The full concave bottom design rolls into a specially tested and designed bevel, which gives the ski a rock solid feel both on edge and during the turn • With a stable "flat spot" to allow the least amount of body movement, the ski will edge as much or as little as desired • The Defiant uses a hybrid carbon/fiberglass lay-up with a polyurethane "core" that enables this to be a consistent ski to ride time and again, with a "flex pattern" within the tightest tolerances • An adjustable tournament fin comes assembled on the ski 260810002

03. Baron

Size: 65", 67", 69"

- Designed to enjoy • "Edge" to "Edge" Concave • "3-Stage Rocker" • Fiberglass Layup • Polyurethane "Core" • "True Set" fin system • Level: Carving to Slalom • The Baron will reintroduce performance and enjoyment to skiers of all levels • Based on a more traditional ski shape, the Baron has performance and support built in • With the fiberglass layup, and a slightly narrower tail, the back of the ski is able to sit deeper in the water, allowing the ski to initiate easier turns • Latest design bevels and rocker line have been added, giving this ski great "edge holding" ability through the wakes • These features all add up to help suit a broad range of styles and varying levels of skier • The combination of design and performance gives the ski a large "sweet spot" creating a very stable ride 260012002

04. Flora Ladies

Size: 65", 67"

- "Edge" to "Edge" Concave Design • Radius Side Cut • "Hybrid Rocker" • Fiberglass Layup • Polyurethane "Core" • "True Set" fin system • Level: Carving to Slalom • The Flora all the newest design characteristics with added surface area; it is loaded with performance and stability • Softer "flex pattern" for the female skier, the ski designed to provide enjoyment and performance to the water ski enthusiast • This ski takes you from a novice to the slalom course, the slightly wider profile allows the ski to carry more speed in the turns whilst still having the edge design of the higher end skis • This ski is highly popular with those in the entry level of the slalom course or those simply wanting to carve up the water 260011005

Size chart & specifications on page 144-145



01.

02.

03.

04.

05.

01. Hammer

Size: 68,5"

• V Bottom Concave Design • "Continuous Rocker" • Fiberglass Layup • Polyurethane "Core" • "True Set" fin system • Level: Carving to Free ride • The Hammer was developed to be used as an all-round cruiser and is great to enjoy a day on the lake or to start on counting the buoys in the slalom course • This ski will bring back the fun to your ride, it makes getting out of the water easy due to its larger surface area, blended v-bottom concave, and comfortable "sweet spot" • The increased surface area makes effortless wake crossings and allow you to ski at various boat speeds whilst greatly increasing the skis stability • Whether you are out doing some serious carving or just having some fun, the Hammer is sure to deliver a smooth, fun ride in all water conditions
260011002

02. Traditional Slalom Ski

Size: 67"

This ski is designed to delivering greater acceleration along with a more controlled ability to get wider earlier due to its larger sweet spot • Allows the skier to exert less strength and makes it one of our most controlled, smooth, and patient skis in the line • Developed to make skiing fun with less effort, it is well suited to skiers of all levels • Comes with a standard fin
260011004

03. Assault Junior

Size: 63,5"

• "Pro Design" • Hybrid Concave • "5-Stage Rocker" • Fiberglass Layup • Polyurethane "Core" • "True Set" fin system • Level: Curious to Enthusiast • This new ski to our range is designed after our latest design, the Rogue • It utilizes the Hybrid Concave design and transitioning into a full "edge" to "edge" concave • We have made a special layup allowing a softer flex producing a very forgiving ski that can still generate a smooth turn and great edge control, whilst being able to generate good speed across the wakes • Introducing these latest design features into a Junior ski will add to the performance and learning curve of the budding skier • With these features and design we believe it is the best Junior ski in this category and will take the avid skier to a new level
260011003

04. Progress Slalom

Progress Slalom 67" + Focus Adjustable + RTS

Size Focus Adjustable: Standard

• Forged aluminum fin • Including the Focus Adjustable binding and RTS • Performance level: beginner to recreational/sport • Gloss UV-coated finish
Progress + Focus Adjustable + RTS: 260010001

05. Hemi Slalom

Hemi Slalom 65" + Focus Adjustable + RTS

Size Focus Adjustable: Standard

• Forged aluminum fin • Includes the Focus Adjustable binding and RTS • Large "sweet spot" • Shaped slalom ski with wider "tip" to help with deep water starts and to improve stability • Performance level: beginner to recreational/sport • Great ski to learn slalom skiing • Gloss UV-coated finish

Hemi Slalom + Focus Adjustable + RTS: 260010002

Size chart & specifications on page 144-145



06.
+ Limit Bindings

06.
+ Focus Bindings



06. The Standard

Size: 144, 153

Size Limit Bindings: XS, S, M, L, XL, XXL

Size Focus Bindings: Standard, XL

- Designed for "rail slides", jumps, switch rides and excessive tricks
- Comes with Focus or Limit bindings
- "3-stage rocker"
- Light PU foam "core" wrapped in fiberglass
- Four 0.9" nylon/fiberglass fins

The Standard 144 + Limit: 208810009

The Standard 153 + Limit: 208810010

The Standard 144 + Focus: 208810007

The Standard 153 + Focus: 208810008

Size chart & specifications on page 144-145



Slalom Binding Specs



Aluminum plate

Lightweight and flat aluminum base plate which makes your feet come even closer to the ski, giving you more control and feeling during a set. The aluminum plate applied on the Rogue binding is unique and has an extra mounting position for the binding which creates the opportunity to mount the rear binding closer to the front binding



Nylon plate

Strong and reliable base plate with indestructible side bars with which the overlay is mounted to the plate. The integrated molded ergonomic foam footbed is soft and comfortable



Inner liner

Custom formed to fit the contours of your foot for the maximum in comfort, fit and finish. Three levels and blends of foam covering help the "liner" conform to your foot like it is one with it. The Rogue, Comfort and Capri each have a uniquely composed "inner liner"



Articulated heel/ankle assembly

Makes the upper part of the bindings move along easier with your lower legs but still gives all the necessary support you need



Dual lacing

System with a bungee cord in the upper ankle section and a tough lace on the lower foot section. Tighten and loosen the laces at upper ankle section and lower foot section independently



Easy attach lace holder

Attach the laces to the binding fast and easy with a press stud system to prevent them from getting in the way during the ride



Achilles kidneys

Locks your Achilles in place and helps keep your ankle positioned properly in the back of the boot to ensure proper foot placement and support



Stretch Panel

The flexible panel on the heels allow for all the necessary extra movements you need during a ride once you're wrapped into a rigid binding



Webbing lace pull loop

Allows you to clinch down the laces to be completely locked in



Dual Density Footbed

Soft ergonomic shaped footbed which gives you all the comfort you need



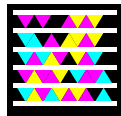
Adjustability

For a large range of various foot sizes

Size chart on page 144-145



01.





02.



03.



03.



04.

05.
Aluminum

05.
Nylon

06.

01. Rogue Front & Rear

Size Men: 8/8.5, 9, 10 Left and Right Specific



- The Rogue was designed to provide the ultimate in stability, rigid comfort, and smooth control that a high end skier desires • Unmatched fit, comfort and enhanced heel hold due to our uniquely shaped foot lasts • Our "liners" have increased support laterally where you need it most while still providing a solid foundation for the heel and ankle thru carefully located articulation. This allows for more precise cuts into the set and more comfort when backing off as well • The Rogue is sure to give you all the performance you need without sacrificing the comfort you want • Lower Heel Design allows the skier to back support off without affecting the "tip" of the ski (for context see Focus Adjustable) • Bungee cord in the upper ankle section for emergency exit • Aluminum plate with two binding mounting positions

Front Left: 330812001 - Front Right: 330812004
Rear Left: 330812005 - Rear Right: 330812006

02. Limit Front & Rear Black

Size: XS, S, M, L, XL, XXL



- The classic Limit ski bindings offer instant ski response and superior "edge control" with their solid lateral support and structured feel • Enhanced heel and insteps support to enhance "edge hold" and angle • Rear lace interlocking design which can be easily adjusted to ensure proper forward and lateral support • This support allows the skier to obtain the proper leverage required when making those critical cuts across the wake • Bindings for intermediate to advanced skiers

Front: 330810003 - Rear: 330810004

03. Comfort / Capri Comfort Ladies

Size Men: 5/8, 8/11, 11/14 - Size Ladies: 5/8, 8/11



- The Comfort is a performance built, comfort managed, ultra supportive boot to make skiing enjoyable for everyone • With our one piece chassis design for stability and support where you need it and matched to an improved formed open toe "inner liner", comfort and function blend perfectly to make skiing on the water all the fun it can be • Easy entry and a snug relaxed fit make the Comfort a binding that riders of all levels can enjoy and depend on • Bungee cord in the upper ankle section for emergency exit • The Ladies Capri binding has a modified and thicker inner liner specially designed for ladies feet

Comfort: 330812003 - Capri: Code 331411001

04. Focus Adjustable

Size: Standard, XL



- The overlay is designed to offer the flexibility needed when backing off on the water and the support needed to push through the course or just carve the lake up • Perfect for recreational to intermediate skiers looking for a supportive boot that is also comfortable and very easy to get into

330812002

05. RTP Pivot/Comfort RTP Pivot

Size: Mini, Standard, XL

- The pivoting Rear Toe Plate provides leverage and increased edge control • Beginner to pro • Customizable strap for a superior fit • Molded ergonomic and soft foam footbed

Comfort RTP Pivot with aluminum plate (Rogue/Comfort/Capri): 330011002
RTP Pivot with nylon plate (Limit/Focus): 330809002

06. Adjustable RTP Pivot

Size: Universal

- The pivoting Adjustable Rear Toe Plate provides leverage and increased edge control • Beginner to pro • Customizable strap for a superior fit • Molded ergonomic and soft foam footbed • The ARTP has a Velcro strap which makes customizing even easier.

ARTP Pivot with nylon plate (Limit/Focus version): 330801015

ROPES & HANDLES

01. Pro Wakeboard Handle Austin

Specs: 15" grip with 5 ft Spectra rope
 A soft EVA foam handle with a nice and sticky leather layer around it • Slick and lightweight nylon molded end caps • Grip diameter: ø 28 mm • 5 ft Spectra rope covered with slim PVC piping • Extremely light
 210012003

02. Frontier Diamond Wakeboard Handle

Specs: 15" grip with 5 ft PE-coated Spectra rope
 • Leather grip nicely finished with diamond stitching • Grip diameter: ø 30 mm
 • 4 mm EVA foam smooth layer underneath the leather layer • Spectra rope covered with slim PVC piping • Extremely light
 210111001

03. Frontier Pearl Wakeboard Handle

Specs: 15" grip with 5 ft PE-coated Spectra rope
 • Leather grip with "TPU pearl drops" • Grip diameter: ø 28.5 mm • 4 mm EVA foam smooth layer underneath the leather layer • Spectra rope covered with slim PVC piping • Extremely light
 210111002

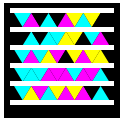
04. The Lockdown Wakeboard Handle

Specs: 15" tractor grip with 5 ft Spectra rope
 • Pro handle with 5 mm die-cut EVA foam Smooth grip • Grip diameter: ø 28.5 mm • 9" pencil floats • 5 ft strong Spectra rope with slim PVC piping
 210811001

05. The Stick Wakeboard Handle

Specs: 15" grip with 5 ft Spectra rope
 • Pro handle with 3 mm die-cut EVA foam Smooth grip • Grip diameter: ø 27.5 mm • 9" pencil floats • 5 ft strong Spectra rope with slim PVC piping
 211011001

01.



02.



03.



04.



05.





06.



07.



08.



09.



10.



11.



12.



13.

06. Jersey Wake Combo

Specs: 15" grip + 4 section 65 ft Mainline
 • 4 mm EVA foam with horizontal grooves • rope with minimum to no stretch • Ideal for all levels of wakeboarding • 9" pencil floats
 • Grip diameter: ø 27 mm • Striped EVA foam V-grip handle which helps performing wrapped tricks • 1 x 50 ft (1524 cm) section • 3 x 5 ft (152 cm) sections
 210011001

07. Wake Combo Ultegra

Specs: 15" diamond grip with 4 section 70 ft mainline
 • Lightweight pro handle with super soft 5 mm EVA foam grip
 • Grip diameter: ø 27 mm • 9" floats • Spectra core with PE-coated mainline, absolutely No stretch • 1 x 55 ft (1676 cm) section • 3 x 5 ft (152 cm) sections
 210008004

08. Wake Combo Max

Specs: 15" diamond grip + 6" V-grip with 4 section 65 ft mainline
 • 5 mm EVA foam diamond grip • Rope with minimum to no stretch • Grip diameter: ø 27 mm • Ideal for all levels of wakeboarding • 9" floats • EVA foam diamond V-grip handle which helps performing wrapped tricks • 1 x 50 ft (1524 cm) section • 3 x 5 ft (152 cm) sections
 210008003

09. Wake 2 Wake Combo Advanced

• 15" grip with 3 section 60 ft mainline • EVA foam twisting die cut • Rope with little to no stretch • Grip ø 27 mm • 9" pencil floats • 60 ft Mainline 1x45 ft (1372 cm) 3x5 ft (152 cm) section
 210011002

10. Wake Starter

Specs: 15" handle incl. 5 ft line, 70 ft mainline
 • 16 strand wakeboard rope with smooth rubber handle • Grip diameter: ø 26.5 mm • Thick 9" floats
 210005002

11. Flat Spectra Rope

Specs: 5 section, 80 ft mainline
 This strong and flat spectra line (2mm) will set the new high quality standard for wakeboard lines! The innovated woven technic that is used is super strong (break strength 22KN = 2.243 KG / 4.945 LBS), flexible and has absolutely no stretch. It's soft to handle, and it looks great! A must for every rider!
 • Flat line; strong, slender woven spectra • 40 strands • no stretch • 4 x 5ft section • 1 x 60ft section
 210111003

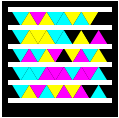
12. PE-Coated Spectra

Specs: 4 section, 75 ft mainline
 • Floating and non-stretch Spectra rope • Stiff and tangle free
 • 3 x 5 ft (152 cm) sections • Spectra core with PE coating
 210505001

13. Spectra Rope

Specs: 4 section, 70 ft mainline
 • 100% 4 mm Spectra, absolutely no stretch • 3 x 5 ft (152 cm) sections • Poly-coated to resist knotting and abrasion
 210111004

01.



01. Rogue Pro Handle Blue ø 27,4mm

Specs: 13" with tacky rubber grip
 • New this year a lightweight handle for professional skiers • This year we have adjusted the thickness to ø 27.4 mm - 1.078 inch for a better grip • Extra strong double-D 13" aluminum bar with durable and extra tacky rubber grip for better performance
 210512001

02.



02. Rogue Pro Handle Green ø 26mm

Specs: 13" smooth rubber grip
 • Lightweight handle • Grip ø 26 mm, perfect for ladies and juniors • Extra strong double D aluminum bar
 210811002

03. Sport Series

Specs: 12" smooth grip with 2/5/8 section 75 ft mainline
 • Tacky team handle with strong aluminum core • Grip diameter: ø 27 mm • Sectioned for perfect shortening
 • Competition shortenings; rope shortening according to the official competition standard
 2 sec.: 210001054
 5 sec.: 210808003
 8 sec.: 210001052

04. B2 Spectra Series

Specs: 12" Smooth grip ø 24 mm, Straight
 13" smooth grip ø 26 mm, Straight
 13" smooth grip, Elliptical Straight
 13" smooth grip ø 26 mm, Radius
 • Unique handles with superior grip • Rope protection grommet inside handle for less rope wear • For all levels of skiing • Radius handle provides enduring runs
 12" smooth grip 24 mm: 210008013
 13" smooth grip 26 mm: 210008014
 13" smooth grip Elliptical: 210008012
 13" smooth grip Radius: 210008015

04.



05. Easy Up Deep V Deluxe + Mainline

Specs: 15" diamond grip with 2 section 70 ft mainline
 Specs: 12" diamond grip with 2 section 70 ft mainline
 • Soft molded 4 mm EVA foam with aluminum core
 • Grip diameter: ø 27 mm
 • 16 strand deep V line for easier slalom starts • Finger protection on handle for safety • 15": 2 floats, 12": 1 float • 1 x 55 ft (1676 cm) section • 1 x 15 ft (457 cm) section
 15": 210008007 - 12": 210009005



04.

05.



05.

06. Kick Off Rope

Specs: 11" handle incl. 5 ft line, 60 ft mainline
• Recreational rope • 8 strand ski rope with EVA foam grip • Grip diameter: ø 29 mm
210006001



06.



07.

07. Transfer Rope

Specs: 11" handle incl. 5 ft line, 60 ft mainline • 12 strand ski rope with EVA foam grip • Grip diameter: ø 29 mm
210006002

08. Kneeboard Combo

Specs: 13" smooth grip + extra 6" grip, 3 section 65 ft mainline
• Small grip locks behind handle hook for a easy start
• Grip diameter: ø 27.5 mm • Ideal for all levels of kneeboarding • 2 x 5 ft (152 cm) sections • 1 x 55 ft (1676 cm) section • PE rope
210008011



08.



09.

09. Wake/Slalom Handle

Specs: 15" handle with smooth grip
• For all levels of bare footing, wakeboarding and skiing • Grip diameter: ø 27 mm
210000035

10. Front Toe Handle

Specs: 14" handle with smooth grip
• High quality front toe handle • Grip diameter: ø 27 mm • Aluminum core • Strong and lightweight
210000036



10.



11.

11. Back Toe Handle

Specs: 16" handle with smooth grip
• High quality back toe handle • Grip diameter: ø 27 mm • Aluminum core • Strong and lightweight
• 16 strand TEK line
210107001

12. 360 Trick Bridle

Size: S, M, L
• The classic trick handle • Grip diameter: ø 27 mm
• Contoured leather strap for added comfort • Gives the skier a comfortable hold on toe tricks
210000037



12.



13.

13. International Mainline

International 70 ft 8 section/10 section - Official rope of International Pro Tours
Construction: 16 strand, 64 filament, 3/8 heavy-duty polypropylene • The best tournament ropes available
• Lowest elongation, highest break strength
• Detachable sections
8 sec.: 210000019
10 sec.: 210000020



01.

01. Cable Bridle

Specs: 8 ft/244 cm
• Rope break strength: 1170 lbs/530 kg • Floating pulley to keep rope away from the propeller and a smoother ride.
Stainless steel hooks: 210101070



02.

02. Rope Bridle

Specs: 8 ft/244 cm
• Length of the rope can easily be adjusted • Break strength: 1300 lbs/590 kg • Floating pulley to keep rope away from the propeller and offer a smoother ride.
Stainless steel hooks: 210101069



03.

03. Magnum Bridle

Specs: 4 ft/122 cm
• Ideal for water sleds and multi-person towables • Ultra strong karabiner style clips • Rope break strength: 3725 lbs/1690 kg
• Float to keep rope away from the propeller.
410102005



04.

04. Water Sports Bridle with Pulley

Specs: 4 ft/122 cm
• Ultra strong karabiner style clips • The pulley reduces stress of the boat's (D-) rings • Rope break strength: 2200 lbs/1000 kg
• Float to keep rope away from the propeller.
210209002



05.

05. Water Sports Bridle without Pulley

• Rope break strength: 2200 lbs/1000 kg • Float to keep rope away from the propeller.
Water Sports Bridle Stainless Steel Hooks:
210207001



06.

06. Line Winder

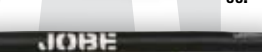
Easily wind up your rope for storage and prevent your rope from tangling up
210205001



07.

07. Spooled Rope

Specs: 1000 ft/305m
• Perfect rope for ski/stunt teams, cable ski centers, etc. • Rope break strength: 1155 lbs/525 kg
210000010



08.

08. Shock Tube

Specs: 4 ft/122 cm
• Absorbs rope shock • Offers more boat safety
210000022



09.

09. Webbing Bungee Dock Tie

Specs: 6 ft/183 cm
• Nylon webbing with internal bungee cord for shock absorption
• Stainless steel clasp for easy hook-up • Loop on both ends
210808002

GLOVES GLOVES





01.



02.



03.



04.



05.



06.



07.



08.



07.



08.



07.



08.



09.



09.

01. Grippa Gloves

Size: XS, S, M, L, XL, XXL

- Pre-curved fingers with padded fingertips for better grip and comfort
- Constructed of nonslip Amara material
- Padded panels and nonslip silicon-printed palm for extra grip
- Soft and strong Amara fabric

340110002

02. Suction Gloves

Size: XS, S, M, L, XL, XXL

- Short model for more freedom of movement
- Anti slip silicon-printed hand palm
- Padded panels on the palm of the hand
- PVC knuckle and finger guards
- Segmented finger design
- Soft and strong Amara fabric in the palm of the hand

340810004

03. Swathe Gloves

Size: XS, S, M, L, XL, XXL

- Short model for more freedom of movement
- Padded panels and nonslip silicon print on palm for extra grip
- Segmented finger design
- Soft and strong Amara fabric in palm of hand

340810003

04. Pro Gloves Silicone

Size: XS, S, M, L, XL, XXL

- Nonslip silicon-printed palm for extra grip
- Soft and strong Amara fabric in palm of hand

340410001

05. Kevlar Adventure Gloves

Size: XS, S, M, L, XL, XXL

- Kevlar grip palms for ultimate control
- 3/4 finger style

340510001

06. Flair Gloves

Size: XS, S, M, L, XL

- Slim fit for ladies
- 3/4 finger style
- Nonslip silicon-printed palm for extra grip
- Soft and strong Amara fabric in palm of hand

340110001

07. Stream Gloves

Size: S, M, L, XL, XXL

- Soft and strong suede fabric in the palm of the hand
- Foam knuckle protection on top of the glove
- 1 1/4 inch webbing strap with Velcro closing

340811001

08. Neoprene Gloves

Size: S, M, L, XL, XXL

- 2.5 mm neoprene glove for extra warmth
- Glued and blind stitched seams
- Nonslip silicon-printed hand palm

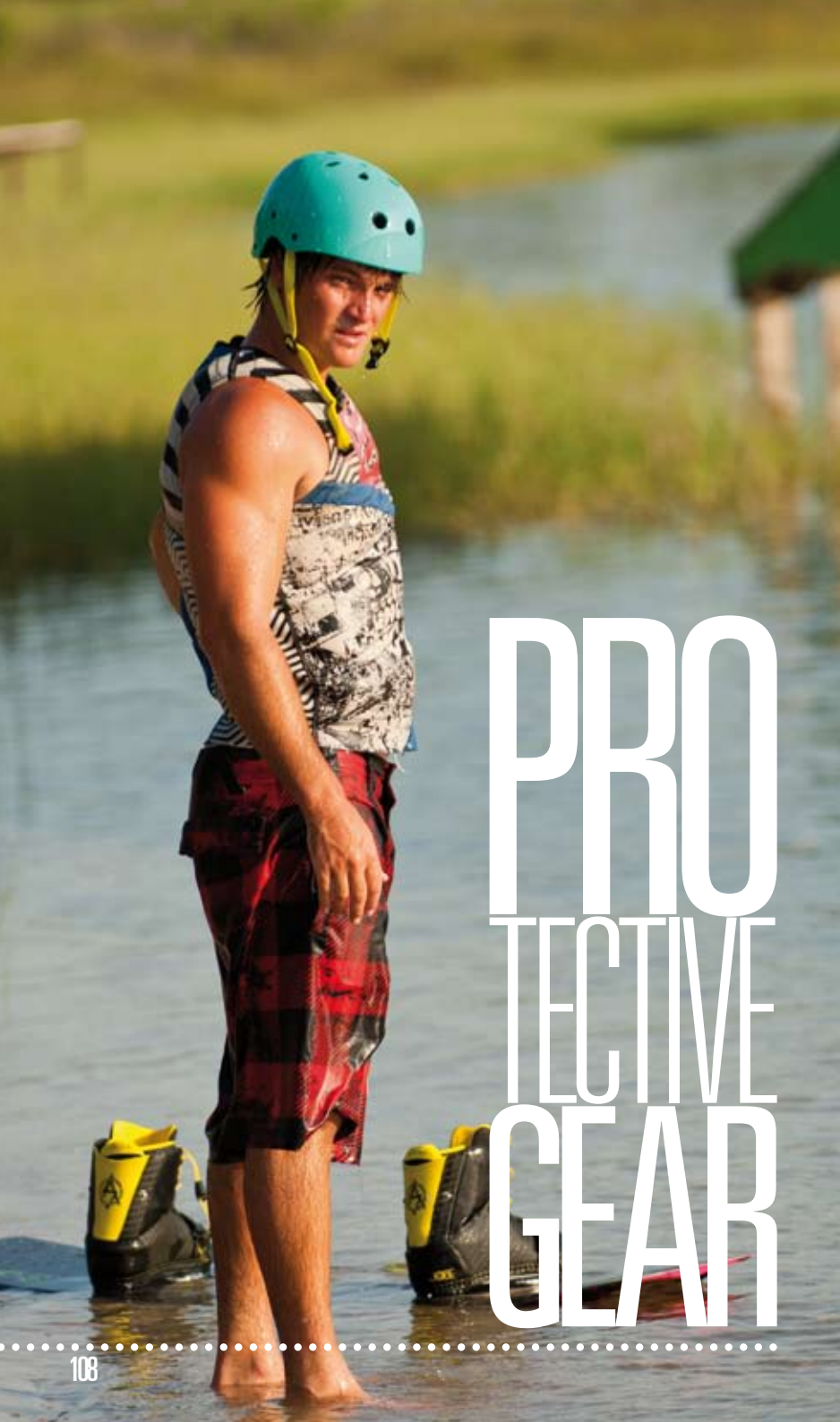
340810001

09. Palm Protectors

Size: Universal

- Extra neoprene layer to wear underneath your gloves to protect your hands from callosity

340807002



PROTECTIVE GEAR



REAR ADJUSTER
01.



REAR ADJUSTER
02.



REAR ADJUSTER
03.



REAR ADJUSTER
04.

01. Pro Helmet Austin

Size: XS, S, M, L, XL

• "classic skate" style shape" CE approved helmet • Small size shell for size XS, S & M, larger size shell for L • Rear Adjuster • Adjustable chin strap • Duraflex© side divider • EVA foam lining with soft lycra edge cover • Includes fit pads to create a perfect fit • Glossy finish with Austin's pro art work • Including decal sheet for customizing your helmet.
370012005

02. Pro Helmet Click

Size: XS, S, M, L, XL

• "classic skate" style shape" CE approved helmet • Small size shell for size XS, S & M, larger size shell for L & XL • Rear Adjuster • Adjustable chin strap • Duraflex© side divider • EVA foam lining with soft lycra edge cover • Includes fit pads to create a perfect fit • Black paint, rubber finish with CK's pro art work • Including decal sheet for customizing your helmet.
370012004

03. Achelos Helmet

Color: Gloss White, Matt Black - Size Black: XS, S, M, L, XL Size White: S, M, L, XL

• CE approved helmet with detachable earpads • Small size shell for size XS, S & M, larger size shell for L & XL • Rear Adjuster • Adjustable chin strap • Duraflex© side divider • Artwork (waterdecal, full color) • EVA foam lining • Includes fit pads to create a perfect fit
White Gloss: 370012003 - Matt Black: 370012002

04. Patrol Helmet

Size: XS, S, M, L, XL

• CE approved helmet with detachable earpads • Small size shell for size XS, S & M, larger size shell for L • Rear Adjuster • Adjustable chin strap • Duraflex© side divider • Artwork (waterdecal, full color) • EVA foam lining • Includes fit pads to create a perfect fit • With subtle art work
371412001



05.



06.



07.



08.

05. Logo Series Helmet

Size: S, M, L, XL

- CE approved helmet • Soft inner lining for comfort • Removable ear protection • Especially made for watersports • Comfortable fit
- Fast drying • Easy adjustable chin straps

370111001

06. Hustler Helmet

Size: S, M, L, XL

- CE approved helmet • Soft inner lining for comfort • Removable ear protection with plastic press studs • Especially made for watersports • Comfortable fit • Fast drying • Easy adjustable chin straps • Metallic or rubber looks

370809001

07. Stripes Helmet

Color: Black Rubber - Size: S/M, L/XL

- CE approved helmet • A must have for the dedicated rider • Includes 4 fit pads and 2 shark shaped EVA foam pads. These detachable fit-pads give you a super comfortable custom fit without absorbing moisture • Popular baseball cap shape • 3 point adjustable strap system attached to the shell with metal press studs • Fast drying • Removable ear protection • Easily adjustable chin straps

370811002

08. X Helmet

Colour: Green Gloss - Size: S/M, L/XL

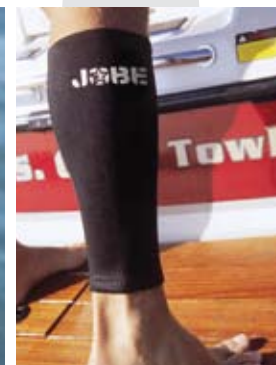
- A must have for the dedicated rider • CE approved helmet • Includes 4 fit pads and 2 shark shaped EVA foam pads. These detachable fit-pads give you a super comfortable custom fit without absorbing moisture • Popular baseball cap shape • 3 point adjustable strap system attached to the shell with metal press studs • Fast drying • Removable ear protection • Easy adjustable chin straps

371111001

09.



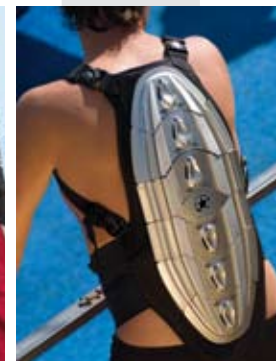
10.



11.



12.



09. Kneebrace with Flexible Reinforcement

Size: M, L, XL

- Unique wrap around knee brace with extra support by hinge straps on the side • With strong Velcro support • Prevents injuries and supports limbs

300810014

10. Spray Leg

Size: S, M, L, XL

- Neoprene calf and lower leg protection • Protects your shin from forceful spray of the ski

300802052

11. Back Support

Size: Universal

- Fully adjustable torso back support • Helps to prevent back injuries and supports back

300801013

12. Shield Back Protector

Size: S/M, L/XL

- CE-approved • Protect your spine with this great new item • Must have for all fanatic PWC riders • It can also be used by wakeboarders, snowboarders, BMX riders and motor crossers

370807001

Size chart on page 144-145



01.

01. Wake Trailer Bag

Size: 61" x 16" x 8" / 154 x 41 x 20 cm
• Fully padded heavy duty polyester bag • Reinforced webbing handles • Has wheels and bag-pull power straps • All terrain wheels for stability and sandy surfaces • Hidden backpack straps • Inner pockets for towels, wetsuit or vest • Board security straps to enable safe transportation • Water drains • Fits wakeboards and wakeskates
220810004

02. Padded Wakeboard Bag

Size: Fits all Jobe wakeboards
• Fully padded heavy duty polyester bag • Added space on the top side to store your wakeboard incl. bindings • Extra long zipper for easy access • Hidden padded backpack straps • Extra compartments for additional gear • Water drains
220810003



02.



03. Padded Wakeskate Bag

Size: 43" / 109 cm
• Fully padded heavy duty polyester bag • Extra long zipper for easy access • Hidden padded backpack straps • Extra large shoe compartment
220810001

04. Padded Kneeboard Bag

Size: Fits all Jobe kneeboards
• Fully padded heavy duty polyester bag • Extra Long zipper for easy access • Hidden padded backpack straps • Additional compartment for extra gear • Water drains
220810002



03.



04.



05. Basic Wakeboard Bag

Size: 56" / 142 cm
• Heavy duty polyester bag • Extra long zipper for easy access
• Water drains
220810012

06. Neoprene Wakeboard Bag

Size Junior: 120-131 cm
• Neoprene protection with tie down straps • Removable shoulder strap
220806001



05.

07. Padded Slalom Bag

Size: 67" / 170, 69" / 175 cm
• Heavy duty polyester bag, padded throughout the entire bottom
• Enlarged binding compartment for front and rear binding and extra storage • Slightly enlarged dimensions to get the skis in and out of the bag a lot easier • Single backpack strap for more carry comfort • Water drains • Tail to mid zipper
220810007

08. Padded Shaped Slalom Bag

Size: up to 69" / 175 cm
• Heavy duty polyester bag, padded throughout the entire bottom
• Enlarged binding compartment for front and rear binding and extra storage • Slightly enlarged dimensions to get the slalom in and out of the bag easier • Single backpack strap for more carry comfort • water drains • Tail to mid zipper
220810008



06.



07.



BACKPACK STRAP



08.



BACKPACK STRAP



09.

09. Shaped Combo Bag

Size: 65"/165 cm

- Heavy duty polyester bag • Slightly enlarged dimensions to get the skis in and out of the bag a lot easier • Water drains
- Removable shoulder strap

220810009

10. Combo Bag

Size: 67"/170 cm

- Heavy duty polyester bag • Slightly enlarged dimensions to get the skis in and out of the bag a lot easier • Water drains
- Removable shoulder strap

220810010



10.



11.

11. Backpack

- Heavy duty polyester backpack • 3 main storage compartments
- 3 extra pockets • Laptop compartment • Sunglass pocket
- MP3 or phone pocket • Padded shoulder straps • Soft back panel with air ventilation • Skateboard straps • Mesh side pockets

220810006



12.

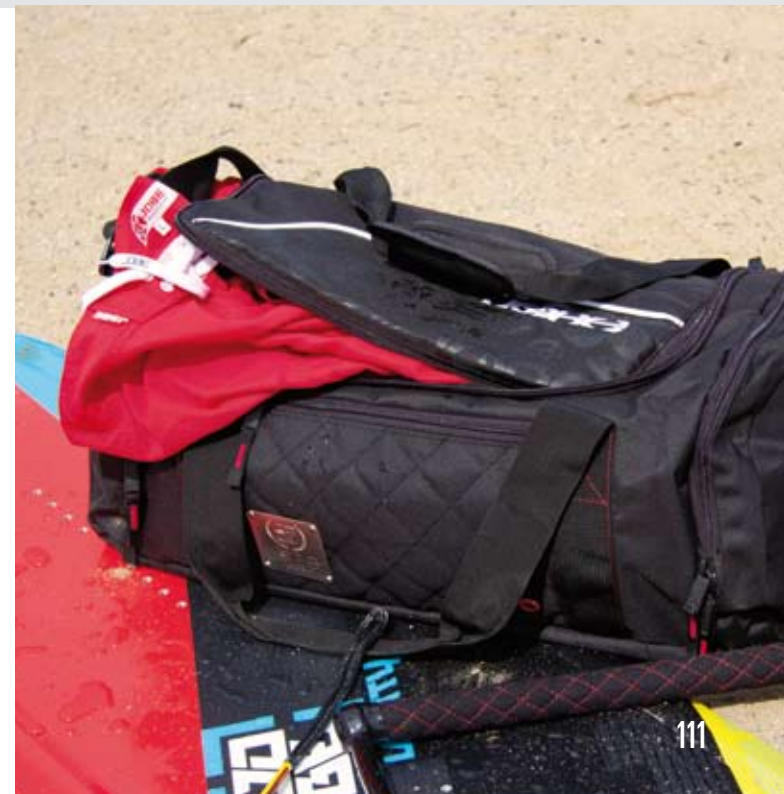
12. Sports Bag

Size: 26"x14"x10" 65x35x25 cm

- Large and comfortable polyester sports/travel bag • 9 handy compartments on the in and outside of the bag to store extra gear
- 4 handles and a removable shoulder strap

220810005

BAGS BAGS BAGS



BOAT ACCESSORIES

01. Addict Tower 1.5

The Addict 1.5 tower with 2 inch diameter aviation grade aluminum tubes and aggressive tribal shaped side-arms! If you like to show off, this is the perfect tower for you! Both tribal arms have a unique square shaped wakeboard rack integrated • This model has improved mounting blocks (connection with the boat), for a stronger and more durable connection • This tower fits on any boat from 76 - 108 inches in width, and can also be folded down above the horizontal side bars • Telescopic top section • 2" diameter tubing • Fits boat decks from (at least) 76"/193 cm to 108"/274 cm in width • Anodized version: aluminum tubes are anodized to increase corrosion resistance and surface hardness
Polished: 400709006 - Anodized: 400709019

02. Addict Quick-Release Mirror Clamp

• Makes the Jobe Quick-Release Mirror Arm compatible with different diameter tubes • Anodized version: aluminum parts are anodized to increase corrosion resistance and surface hardness
Anodized: 2.25"-2.5": 400709023
Anodized: 1.875"-2.0": 400709012

03. Addict Quick-Release Mirror Arm w. Mirror

• Easy to mount on your Jobe tower • Super easy connect/disconnect system • Fits all towers with 1.875"-2" tubes • Comes with a 185 mm x 370 mm safety mirror • Anodized version: aluminum parts are anodized to increase corrosion resistance and surface hardness
Anodized: 400710003

04. Addict Pivoting Swivel Board Rack

• Super easy access to your boards • Boards swing towards you in a 90 degree angle from the tower • Fits Ø 1.875"-2" tubing • Can be mounted at any desired angle • Bungee securely holds 2 boards • Rubber layer in between the forks protects your board or wakeskate
Anodized: 400010001



01.
Polished - Anodized

02.



03.
Anodized



04.
Anodized



05.
Polished - Anodized



06.
Polished - Anodized



07.
Polished



08.

09.

05. Addict Tower 1.3

The Addict 1.3 is the best looking tower on the market; manufactured out of the best aviation grade aluminum available. The 2 inch tubes look great and will definitely make heads turn!! The horizontal bars run parallel to most window-lines, making the tower more rigid and stable. This tower fits on boats from 76-108 inch wide. This tower is higher than other towers which will give you that extra airtime and more space to walk around on the boat

- 2" diameter tubing
- This model has improved mounting blocks (connection with the boat), for a stronger and more durable connection
- Fits boat decks from (at least) 76"/193 cm to 108"/274 cm in width
- Anodized version: aluminum tubes are anodized to increase corrosion resistance and surface hardness
- Can be folded down for winter storage

Polished: 400708004 - Anodized: 400709009

06. Addict Quick-Release Swivel Board Rack

Addict Quick-Release Swivel Board Rack Anodized

- Fits Ø 1.875"-2" tubing
- Super easy connect / disconnect system
- Can be mounted in any desired angle
- Bungee securely holds 2 boards
- Rubber layer in between the forks protects your board or wakeskate
- High polished aluminum finish
- Anodized version: aluminum parts are anodized to increase corrosion resistance and surface hardness

Polished: 400709008 - Anodized: 400709014

07. Addict Light Bar

- Bullet shaped & great quality
- Comes with 5 chrome lights, includes wiring
- 2 lights face one direction, 3 lights face the other
- Wiring comes with protection sleeves and connection plugs
- High-polished aluminum finish
- Fits all Jobe Towers

Polished: 400711001

08. Addict Light Bar Clamp

- Makes the Jobe Light Bar compatible with different diameter tubes
- Comes in a set of 2

Polished 2.5": 409909002 - Polished 2.0": 409909001

09. Addict Rack Clamp

- Makes the Jobe Board and Ski Racks compatible with different diameter tubes
- Fits Fixed and Quick-release Jobe Board and Waterski Racks!
- Anodized versions: Aluminum clamps are anodized to increase corrosion resistance and surface hardness

Polished: 2.25"-2.5": 400709016 - Polished: 1.875"-2.0": 400709015
Anodized: 2.25"-2.5": 400709018 - Anodized: 1.875"-2.0": 400709017

01. Addict Tower 1.1

The Addict 1.1 is manufactured with 2 inch diameter aviation grade aluminum tubes and is easy to fold down completely. This model has improved mounting blocks (connection with the boat) for a stronger and more durable connection • This tower is very simple and easy to install, looks super stylish on any boat and is hard to match in price and performance • Telescopic top section • 2" diameter tubing • Fits boat decks from (a-t least) 76"/193 cm to 108"/274 cm in width.
Polished: 400708002

02. Addict Swivel Board Rack

• Fits \varnothing 1.875"-2" tubing • Can be mounted in any desired angle
• Bungee securely holds 2 boards • Rubber layer in between the forks protects your board or wakeskate • High polished aluminum finish
Polished: 400708008

03. Addict Curved Mirror Arm with Mirror

• Easy to mount on your Jobe tower • Fits all towers with 1.875"-2" tubes • Comes with a 185 mm x 370 mm safety mirror • Curved for increased view area
Polished: 400710004

04. Addict Bullet Speakers

• Easy to mount on your Jobe tower • Rubber layer behind the speaker grills which prevents water from coming in to the shells
• Internal wiring system • 6.5" Coaxial waterproof speakers
• Mounting diameter: \varnothing 155 mm • Technical specs: Nominal Impedance: 4 Ω +/- 15%, Dc Resistance: 3.6 Ω , Nominal Power Handling: 60, Max. Power Handling: 120W
Polished: 400709001

05. Addict Bullet Speaker Clamp

• Makes the Jobe Bullet Speakers compatible with different diameter tubes • Comes in a set of 2
Polished: 2.25"-2.5": 409909004
Polished: 1.875-2.0": 409909003



01.
Polished



02.
Polished



03.
Polished



04.
Polished

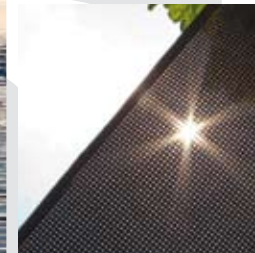
05.



06.
Stainless Steel



07.
Stainless Steel - Aluminum



08.
Stainless Steel Perforated fabric



10.
Polished



11.
Polished

06. Addict Tower Bimini

Size: M, L

The Jobe Addict Bimini top with Sunbrella® fabric is a first-rate fabric that protects you and your family against ultra violet radiation, it is fungus and mildew repellent and is easy to clean. The Bimini is easy to install (you don't need to drill holes in your boat or tower), easy to use and quickly folds backwards for travelling and while not in use. The high quality frame is made out of polished stainless steel. The Bimini comes with a cover to protect the fabric while not in use. • It will fit all Jobe towers and most other brands.

M: 137 cm wide top for boat decks from 80" to 94"/203 cm to 238 cm. L: 155 cm wide top for boat decks from 94" to 108"/238 cm to 275 cm

Stainless Steel: 400709011

07. Addict Tower Bimini Clamp

- Makes the Jobe Bimini compatible with different diameter tubes
- Comes in a set of 4

Polished: 2.5" 400710002 - Polished: 1.875 - 2.0" 400710001

08. Boat Bimini

Size: S, M, L

This comfortable Bimini is easy to install on your boat and provides maximum protection against sun rays ultra violet radiation. You don't need a wakeboard tower for installation; this Bimini will mount directly on the surface of the boat deck.

This Bimini is available in two versions: 1. Lightweight aluminum frame with protective UV coated nylon top. 2. High quality stainless steel frame with Sunbrella® top. (Sunbrella® is a first-rate fabric that protects against UV radiation, it is fungus and mildew repellent and easy to clean). Both versions are complete with support tubes and a boot to protect the fabric while not in use.

S: Width 67" to 72" (170.5 to 183 cm)

M: Width 73" to 78" (185 to 198 cm)

L: Width 79" to 84" (200 to 213.5 cm)

Stainless: 400811001 - Aluminum: 400811002

09. Boat Bimini With Perforated Fabric

Size: S, M, L

This Sunbrella® fabric gives protection against the sun but is perforated which allows to let some light and warmth through in a comfortable way. The Bimini comes with a cover to protect the fabric while not in use. This perforated Bimini is only available in the stainless steel version.

Stainless Steel Perforated fabric: 400812001

10. Addict Quick-Release Swivel Waterski Rack

- Fits Ø 1.875"-2" tubes
- Super easy connect/disconnect system
- Can be mounted at any desired angle
- Bungee securely holds a combo pair
- Rubber layer in between the forks protects your waterskis
- High-polished aluminum finish

Polished: 400707001

11. Addict Wakeboard/Kneeboard Rack

- This combo rack is made to store your kneeboard and wakeboard
- It is easy to mount on your tower
- Can be mounted in any desired angle
- Bungee ropes securely hold the boards
- Rubber layer in between the forks protects your wakeboard and kneeboard
- High polished aluminum finish.

Polished: 400712001



01.



02.



03.



04.



05.

01. Adjustable Pro Ski Pylon

- Short ski tube • Easy to mount in all boats • Telescopic brace arms from 33" (83.5 cm) up to 57" (144 cm) • Main pylon adjusts from 34" (86 cm) up to 58" (147 cm) high • Stainless steel with Delron Swivel top • Quick and easy to disconnect 400705003

02. The Pod

(2 pieces)

- The Pod is specifically designed to fit boats that are great for waterskiing and wakeboarding but just can't give riders the height they need • Quick and easy to install • Fits all inboard and outboard boats • Ski eye for low line activities • Self-supporting with two stainless steel arms and a 6.0" flush mount base plate • Secured by a 5,000 lb cable/ratchet strap assembly • Constructed with 84" (213.4) x 2.5" (6.4 cm) x 0.25" (0.64 cm) aircraft aluminum • This model breaks down into two pieces for easy storage 400804002

03. Fat Pole

(2 pieces)

- Diameter 3.0" (7.6 cm) • Inside diameter 2 6/8" (6.56 cm) • Quick and easy to install • Available in a 2 piece model • The 2 piece model breaks down for easy storage • Adjustable from 72" (183 cm) to 85" (215 cm) • Sleeves for a tight fit while protecting your pylon • Ski eye for low line activities • Secured by a 5,000 lb cable/ratchet strap assembly • Constructed with aircraft aluminum 400004002

04. Gunnel Mount Boom

- An easy way to learn how to barefoot/ski • Can be attached to virtually any boat: inboard, outboard or I/O • Any family boat turns into the ultimate barefoot/ski boat with this universal boom • Strong, safe and easy to mount 400703001

05. Aggressor Boom

- Solid core for extra strength • Fits most tournament style ski boats • Uniquely designed clamp quickly adjusts and removes the boom without tools • Vinyl coated stainless steel cables • Specially grooved end section for easy rope handle attachment 400804005

06. Baby Block

Volume: 86 lbs/39kg
Size: 11" (28 cm) x 14.5" (37 cm) x 14.5" (37 cm)
• Small and easy to position in the boat • Inner bladder and protection cover • Easy to use counterweight
401006001



06.

07. Launch Pad Twins

12V water pump included
Volume: 2 x 350 lbs/159kg
Size: 2 x Ø 15"/38 cm, L 50"/127 cm
• UV resistant heavy-duty vinyl construction • Inner bladder and protection cover • Lock tight straps, easy fill application
400800003



07.

08. Launch Pad

12V water pump included
Volume: 500 lbs/227kg
Size: Ø 20"/51 cm, L 50"/127 cm
• UV resistant heavy-duty vinyl construction • Inner bladder and protection cover • Lock tight straps, easy fill application
400800002



08.

10. Boat Mirror

Size: 2.1/2" (6.4 cm) x 8.0" (20.3 cm)
• Fully adjustable • Convex mirror with quick-mount system • Universal to mount above or below the windshield, or on the dashboard
420805004



10.

11. Safety Mirror

Size: 4.1/4" (10.8 cm) x 8.0" (20.3 cm)
• Universal interior mirror • Mounts above or below the windshield • Fits frames from 5/8" (1.1 cm) to 1.0" (2.5 cm) thick • Fully adjustable with anti-scratch quick mount bracket
420805003



11.

12. Suction Cup Mirror

Size: 4" (10.2 cm) x 8" (20.3 cm)
• Fully adjustable mirror, stays in position • No holes to drill! No tools required! No scratching! • Attaches to any clean, non-porous surface - dashboard, console, or windshield mount.
420709001



12.

13. Extreme Mirror

Size: 7.0" (17.8 cm) x 20" (50.8 cm)
• Fits windshield frames from 3/8" (10 mm) to 1-1/4" (32 mm) • Multi-lens mirror with one stationary and two adjustable lenses • Ball & socket tension adjustment knob to keep the mirror where you position it • Bracket will mount to both rectangular and rounded windshield frames from 3/8" (10 mm) to 1-1/4" (32 mm) • Mounts above or below the windshield
420806001



13.

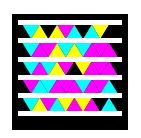


09.





TOWABLES



01. Binar

Deflated size: 81" x 78"/206 x 198 cm
• Full nylon cover • Heavy-duty PVC • Comfortable neoprene seat pads • 10 EVA foam filled webbing handles with neoprene knuckle guards • 4 air chambers • 2 extra strong towing points/can be towed in two directions • 4 water drains • Covered "Boston" valve • 3 speed valves • Rider capacity: 2 people
230212005

02. Lunar

Deflated size: 100" x 78"/254 x 198 cm
• Full nylon cover • Heavy-duty PVC • Comfortable neoprene seat pads • 14 EVA foam filled webbing handles with neoprene knuckle guards • 4 air chambers • 2 extra strong towing points/can be towed in two directions • 4 water drains • Covered "Boston" valve • 3 speed valves • Rider capacity: 3 people
230212006

03. Sonar

Deflated size: 120" x 78"/305 x 198 cm
• Full nylon cover • Heavy-duty PVC • Comfortable neoprene seat pads • 18 EVA foam filled webbing handles with neoprene knuckle guards • 4 air chambers • 2 extra strong towing points/can be towed in two directions • 4 water drains • Covered "Boston" valve • 3 speed valves • Rider capacity: 4 people
230212007



01.



02.



03.





01. Apache

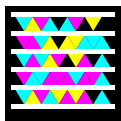
Deflated size: 123" x 42"/312 x 107 cm

Have a wild and fun ride, or transform the Apache into a nice and relaxed canoe and go explore the area • Full nylon covered • Heavy-duty PVC • 6 EVA foam filled webbing handles with neoprene knuckle guards • 4 air chambers • 1 water drain • 3 back rests • Covered "Boston" valve • 3 covered speed valves • "Quick connector" • 2 detachable PVC molded fins • Including 2 detachable oars with comfortable T-Grip • Rider capacity: 3 people 230212004

WATER



02.



02. KickFlip

Deflated size: 62" x 50"/158 x 129 cm

Just sit back and relax, while you have an easy ride. Or, when you turn the towable around and use the 2nd tow point, make sure that you have some tube experience to keep up with the Kick Flip! • Full nylon covered • Heavy-duty PVC • Comfortable neoprene pads • 8 EVA foam filled webbing handles with neoprene knuckle guards • 2 Air chambers • 4 water drains • Covered "Boston" valve • Stem valve • 2 "quick connectors"/can be towed in two directions • Rider capacity: 2 people
230212011







01.



01. Sergeant

Deflated size: 67" x 51"/170 x 129 cm
 • Full nylon cover • Heavy-duty PVC • 2 EVA foam filled webbing handles with neoprene knuckle guards • 3 air chambers including airfloor and backrest • Water drains • Neoprene covered "Boston" valve • 2 Stem valves • "Quick connector"
 • Rider capacity: 1 person
 230411004



02.



02. Captain

Deflated size: 69" x 78"/175 x 198 cm
 • Full nylon cover • Heavy-duty PVC • 4 EVA foam filled webbing handles with neoprene knuckle guards • 5 air chambers including 2 airfloors and 2 backrests • Water drains • Neoprene covered "Boston" valve • 4 Stem valves • "Quick connector"
 • Rider capacity: 2 people
 230211009

03.



03. General

Deflated size: 69" x 104"/175 x 264 cm
 • Full nylon cover • Heavy-duty PVC • 6 EVA foam filled webbing handles with neoprene knuckle guards • 7 air chambers including 3 airfloors and 3 backrests • Water drains • Covered "Boston" valve • 6 stem valves • Extra strong double tow point • Rider capacity: 3 people
 230411005



01.

01. Rumble

Deflated size: 54"/137 cm
 • Nylon cover • Heavy-duty PVC • 2 EVA foam filled webbing handles • 1 air chamber and 1 safety chamber • Water drain • Boston valve • Rider capacity: 1 person
 230212013



02.

02. Galaxy

Deflated size: 54"/137 cm
 • Nylon cover • Heavy-duty PVC • 4 EVA foam filled webbing handles with neoprene knuckle guards • 1 air chamber and 1 safety chamber • Water drain • Covered "Boston" valve • Rider capacity: 1 person
 230509005

03. Galaxy Package

Included: Galaxy, Wrist Seal, Quick Release, Orange Flag, foot pump and rope for towables
 238812001

04. Crusher

Deflated size: 56"/142 cm
 • Nylon cover • Heavy-duty PVC • 4 EVA foam filled webbing handles with neoprene knuckle guards • Including Comfort cushion • 1 air chamber and 1 safety chamber • Water drain • Covered "Boston" valve • "Quick connector" • Rider capacity: 1 person
 230210003



03.

05. Hot Seat

Deflated size: 58"/147 cm
 • Full nylon cover • Heavy-duty PVC • 4 EVA foam filled webbing soft-grip handles with neoprene knuckle guards • 1 air chamber and 1 safety chamber • Water drain • covered "Boston" valve • "Quick connector" • Rider capacity: 1 person
 230511005

06. Giant

Deflated size: 71"/181 cm
 • Nylon cover/Heavy-duty PVC • 8 EVA foam filled webbing handles • 1 air chamber and 1 safety chamber • Water drain • Covered "Boston" valve • "Quick connector" • Rider capacity: 3 people
 230409005





04.



05.



06.





WAVE TUBES

01. Airstream II

Deflated size: 66" x 44"/168 x 112 cm

- Full nylon cover • Heavy-duty PVC • Comfortable neoprene pad
 - 4 EVA foam filled webbing handles with neoprene knuckle guards
 - 1 flat webbing handle • 2 air chambers • 2 water drains
 - covered "Boston" valve • Speed valve • Rider capacity: 2 people
- 230212001

02. Airstream III

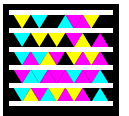
Deflated size: 76" x 60"/193 x 153 cm

- Full nylon cover • Heavy-duty PVC • Comfortable neoprene pad
 - 6 EVA foam filled webbing handles with neoprene knuckle guards
 - 2 flat webbing handle strips • 2 air chambers • 2 water drains
 - covered "Boston" valve • Speed valve • Rider capacity: 3 people
- 230212002

03. Airstream IV

Deflated size: 85" x 75"/216 x 191 cm

- Full nylon cover/Heavy-duty PVC • Comfortable neoprene pad
 - 8 EVA foam filled webbing handles with neoprene knuckle guards
 - 2 flat webbing handle strips • 2 air chambers • 2 water drains
 - covered "Boston" valve • Speed valve • Rider capacity: 4 people
- 230212003





01.



02.



03.





01.



02.

01. Tribal I

Deflated size: 50" x 53"/127 x 135 cm

- Full nylon cover • Heavy-duty PVC • 4 EVA foam filled webbing handles with neoprene knuckle guards • 2 air chambers • Easy re-entry • Full neoprene covered airfloor • Water drain • Covered "Boston" valve • "Quick connector" • Rider capacity: 1 person 230411002

02. Tribal II

Deflated size: 66" x 55"/168 x 140 cm

- Full nylon cover • Heavy-duty PVC • 4 EVA foam filled webbing handles with neoprene knuckle guards • 2 air chambers • Easy re-entry • Full neoprene covered airfloor • Water drains • Covered "Boston" valve • "Quick connector" • Rider capacity: 2 people 230211004



03.



04.



05.



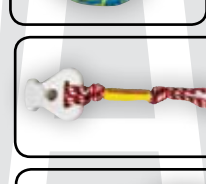
06.



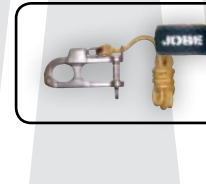
07.



08.



09.



10.

03. 2 Person Towrope

Specs: 50 ft/15 m
• Break strength: 2375 lbs/1077KG • For 1 or 2 person towables
Stainless steel hook: 210001048
Without hook: 210012002

04. 4 Person Towrope

Specs: 55 ft/17 m
• Ideal for multi-person towables up to 4 person • 16 strands, 84 filament rope, break strength: 4100 lbs/1860 kg • Float attachment 210001049

05. 6 Person Towrope

Specs: 55 ft/17 m
• Ideal for watersleds and multi-person towables, up to 6 person • 16 strands, 152 filament rope, break strength: 6100 lbs/2767 kg • Float attachment • Up to 6 person towables 210008002

06. 10 Person Towrope

Specs: 63 ft/19 m
• Ideal for watersleds and multi-person towables up to 10 person • 16 strands, 152 filament rope, break strength: 8000 lbs/3628 kg • Float attachment 210012001

07. Bungee Rope

Specs: 49 ft/15 m
• Most extreme towrope on the market • Less stress on towable and boat • Break strength: 3235 lbs/1465 kg 210303001

08. Bungee Extension

Specs: 3 ft/90 cm
• Handy extension of your towrope • Less stress on towable and boat • Break strength: 4100 lbs/1860 kg 210210001

09. Buckle Connector

Specs: 3 ft
• Easy universal connector for all towables without a buckle • Rope break strength: 6100 lbs/2800 kg 230812001

10. Quick Release w. Wrist Seal

• Large size Quick Release with rope and wrist seal • Fits all Jobe "Quick connector" buckles that are attached to the tow points of towables 210006005

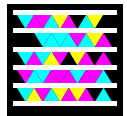


11.

11. Bumble Bee

Deflated size: 56" x 54"/143 cm x 136 cm

Because of the innovated design, the Bumble Bee is the first controllable towable in the Jobe range: you are in control! • Fully nylon covered • Heavy-duty PVC • 2 EVA foam filled webbing handles with neoprene knuckle guards, 1 Flat webbing handle • Comfortable neoprene seat pad • 4 air chambers • 1 water drain • Covered "Boston" valve • 3 speed valves • Rotating "quick connector" • 4 PVC molded fins for more control • Rider capacity: 1 person 230212008



01. Breeze

Deflated size: 54" / 138 cm

- Full nylon cover • Heavy-duty PVC • 3 comfortable neoprene pads • 4 EVA foam filled webbing handles with neoprene knuckle guards • Flat webbing handle • 1 air chamber and 1 safety chamber • Water drain • Covered "Boston" valve • "Quick connector"
 - Rider capacity: 1 person
- 230211005

02. Storm

Deflated size: 70" / 178 cm

- Improved quality full nylon cover / Heavy duty PVC
 - 3 comfortable neoprene pads • 8 EVA foam soft-grip handles with neoprene knuckle guards • 1 air chamber • 2 water drains, covered boston valve and buoyancy chamber • Quick connector
 - Rider capacity: 2 persons
- 230211006

03. Tornado

Deflated size: 80" / 203 cm

- Full nylon cover • Heavy-duty PVC • 3 comfortable neoprene pads • 6 EVA foam filled webbing handles with neoprene knuckle guards • 6 flat webbing handles • 1 air chamber and 1 safety chamber • 2 water drains • covered "Boston" valve • "Quick connector"
 - Rider capacity: 3 person
- 230211007

04. Hurricane

Deflated size: 96" / 244 cm

- Full nylon cover • Heavy-duty PVC • 3 comfortable neoprene pads • 8 EVA foam filled webbing handles with neoprene knuckle guards • 6 flat webbing handles • 1 air chamber and 1 safety chamber • 3 Water drains • Covered "Boston" valve • "Quick connector"
 - Rider capacity: 4 person
- 230211008



01.



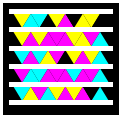
02.



03.



04.







01. Hydra

Deflated size: 54" x 35"/137 x 89 cm

- Full nylon cover • Heavy-duty PVC • 2 EVA foam filled webbing handles with neoprene knuckle guards • Supporting sidewalls • 2 air chambers • Water drain • 2 speed valves • "Quick connector"
- Rider capacity: 1 person

230212014

02. Hydra Package

Included: Hydra, Wrist Seal, Quick Release, Orange Flag, Foot Pump and Rope for Towables

238812003

03. Hover

Deflated size: 104" x 76"/264 x 193 cm

- Full nylon cover/heavy-duty PVC • "Quick connector" • 4 EVA foam filled webbing handles • Long flat webbing handle strip
- 2 air chambers • 2 water drains • 2 Covered "Boston" valves

• Rider capacity: 2 people

230410001



01.



02.



03.

04. Joker

Deflated size: 83" x 61"/210 x 155 cm
• Full nylon cover/heavy-duty PVC • "Quick connector" • 2 EVA foam filled webbing handles • 3 air chambers • 3 covered stem valves • 3 water drains • Rider capacity: 1 person
230411003

05. GT

Deflated size: 35" x 87"/89 cm x 221 cm
• Full nylon cover • Heavy-duty PVC • 4 EVA foam filled webbing handles with neoprene knuckle guards • Big Neoprene comfort seat pad • 3 Air chambers, including side floats • 2 PVC fins for tracking • "Quick connector" • Water drain • Covered "Boston" valve • 2 Stem valves • Rider capacity up to 2 person
230511002



04.



05.





01. Great Ride

Deflated size: 87" x 43"/221 x 110 cm

- Full nylon cover • Heavy-duty PVC • "Quick connector" • 2 EVA foam filled webbing handles and 12 flat webbing handles • 3 air chambers • 2 water drains • 3 stem valves • Rider capacity adjustable: 2 person 230110001

02. Double Action Hand Pump

Size: 19"/48 cm

- Capacity 4,000 cc • 5 different nozzles (Includes Halkey Roberts nozzle for inflatable boats) 410400021

03. Foot Pump

Size: 12.5" / 32 cm

- Capacity 2,000 cc • (Includes Halkey Roberts nozzle for inflatable boats) 410805001

04. Heavy-duty Pump

- 3 psi/0.21 bar • Inflates a Hotseat towable in 45 sec. • 230v Euro plug EU Mainland • Perfect pump for larger items • (Includes Halkey Roberts nozzle for inflatable boats) 410205001

NOT AVAILABLE IN THE UK

05. Air Pump

- 1 psi/0.07 bar • Inflates a Hotseat towable in 150 sec. • 3 different nozzles 230V euro plug: 410500006 NOT AVAILABLE IN THE UK 230 V UK plug: 410501031 12 V: 410502010

06. Turbo 12 V Pump

- Fastest 12 V pump on the market, Inflates a Hotseat towable in 100 sec. • Includes fittings for most inflatable brands • Includes crush resistant hose that fills to 2.5 psi/0.17 bar • 4 different nozzles • Includes Halkey Roberts Valve 410007001



02.



03.



04.



05.



06.

07. Octopus 2p

Deflated size: 62" x 69"/157 x 175 cm

- Full nylon cover • Heavy-duty PVC • 4 EVA foam filled webbing handles with neoprene knuckle guards • 2 Neoprene comfort seat pads • 4 air chambers, including 2 side floats & airfloor • "Quick connector" • Water drains • Covered "Boston" valve • 3 stem valves • Rider capacity up to 2 person 230511004

08. Octopus 3p

Deflated size: 78" x 69"/198 x 175 cm

- Full nylon cover • Heavy-duty PVC • 8 EVA foam filled webbing handles with neoprene knuckle guards • 1 Flat webbing handle • 3 Neoprene comfort seat pads • 5 Air chambers, including 2 side floats & 2 airfloors • "Quick connector" • Water drains • Covered "Boston" valve • 4 stem valves • Rider capacity up to 3 person 230511001



07.



08.





01.

01. Thunder

Deflated size: 53.5" x 55.5"/136 x 141 cm

- Nylon cover • Heavy-duty PVC • 2 EVA foam filled webbing handles • 1 air chamber and 1 safety chamber • Water drain • Boston valve • Rider capacity: 1 person
- 230512001

02. Tube Bag

1-2 person tube bag: 220810013

3-5 Person tube bag: 220811001

03. Scream Package

- Included: Scream, Wrist Seal, Quick Release, Orange Flag, Foot Pump and Rope for Towables • Nylon cover / Heavy duty PVC • 4 EVA foam soft-grip handles with neoprene knuckle guards • 1 air chamber • Water drain, covered boston valve and buoyancy chamber • Rider capacity: 1 person
- 238812002

04. Double Trouble

Deflated size: 76" x 60"/193 x 152 cm

- Nylon cover • Heavy-duty PVC • 4 EVA foam filled webbing handles with neoprene knuckle guards • 1 air chamber and 1 safety chamber • Water drain • covered "Boston" valve • "Quick connector" • Rider capacity: 2 person
- 230511003

05. Triplet

Deflated size: 96" x 54"/244 x 137 cm

- Nylon cover • Heavy-duty PVC • 6 EVA foam filled webbing handles with neoprene knuckle guards • 1 air chamber and 1 safety chamber • Water drain • Covered "Boston" valve • "Quick connector" • Rider capacity: 3 person
- 230211003



02.
1-2 Pers.



02.
3-5 Pers.







01.

01. The Island

Deflated size: 9,2 ft / 281 cm

"The Island" is for sure a great party Island for 6 friends! You can go tubing or have a great time hanging out on the water and sit back and relax in the sun on this tropical Island.

- Full nylon covered
 - Heavy-duty PVC
 - 12 EVA foam filled webbing handles with neoprene knuckle guards
 - Comfortable neoprene back rest pads
 - 8 Air chambers
 - 6 Integrated cup holders
 - Water drain
 - 1 Speed valves
 - 7 Stem valves
 - "Quick connector"
 - Easy boarding platform
 - Rider capacity: 6 person
- 230212015



02.



03.

02. Speedline Kids Tube

Deflated size: 59" x 44" x 16" / 150 x 112 x 41 cm

- Heavy duty PVC • 2 strong molded handles • 5 air chambers • Boston valve and air floor • Quick connector
 - Rider capacity: 2 kids
- 230107002

03. Dolphi Trainer

Deflated size: 55" x 37" / 140 x 94 cm

This Jobe Dolphi Trainer is developed to teach children to waterski and to experience the excitement of tubing with fun and confidence. With the possibility to make a dry start, any kid can start easily. When they build up their confidence and skills you can pull them behind a boat. The Dolphi Trainer is easy to re-board from the water or ski platform. It's guaranteed to be a lot of fun!

- Inflatable seat, which can easily be folded down when going to the next ski level
- Inflatable floor
- Full nylon covered
- Heavy-duty PVC
- 2 flat webbing handles
- 2 Soft nylon toe grips
- 2 air chambers
- 2 water drains
- 2 speed valves
- Including trainer handles, tow handle and 32 ft PE line

• Rider capacity: 1 kid

230511007

04. Trampoline

Size: 10 ft, 15 ft, 20 ft

- Heavy-duty UV treated PVC vinyl
 - Jump surface 10 ft: 4,7 ft (1.43 m)/15 ft: 7,7 ft (2.36 m)/20 ft: 11 ft (3.30 m)
 - Galvanized frames for strength and durability
 - The black coating on the springs prevent rusting
 - Climb on ladder, repair kit, Heavy-duty pump and anchor bag
- 10 ft (3.00 m): 290210001
 15 ft (4.60 m): 290210001
 20 ft (6.10 m): 290210001



TOWABLES
YOUTH

04.



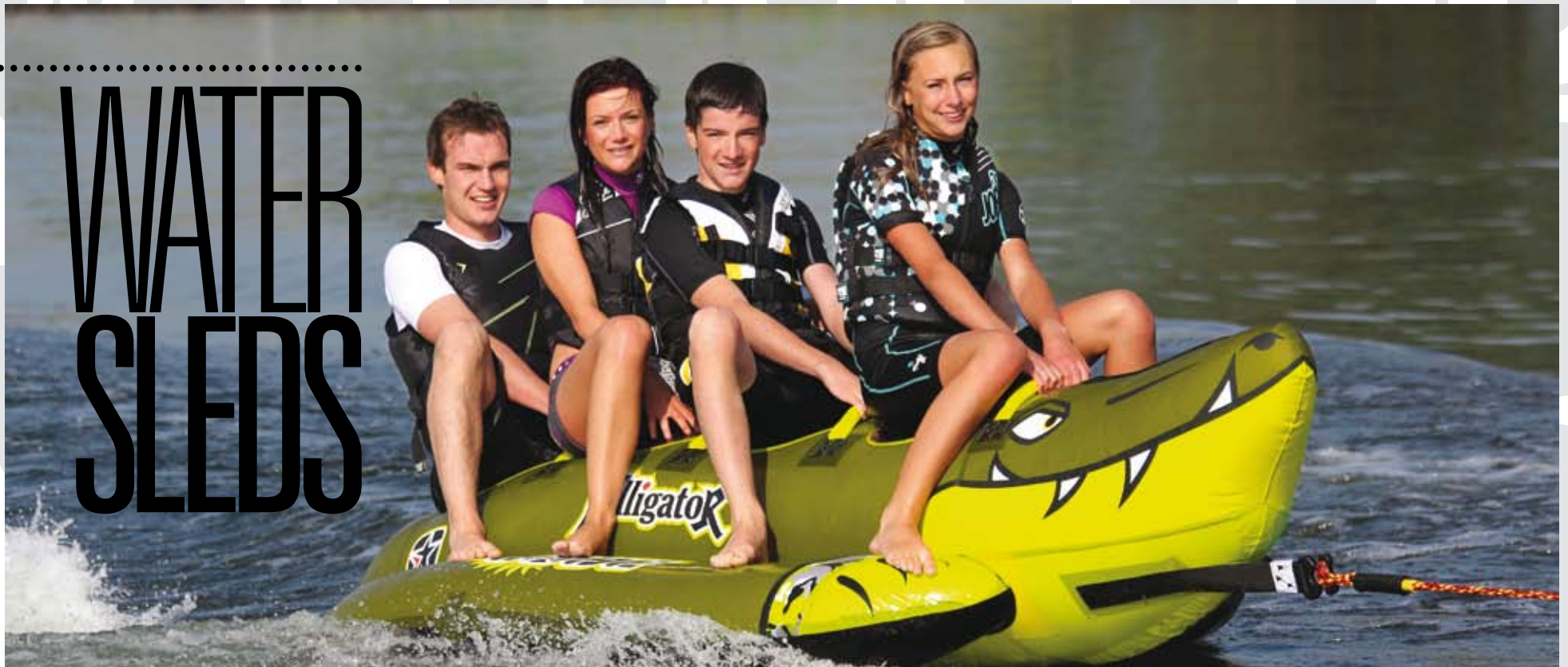
TRAMPOLINES



01.

.....

WATER SLEDS



02.



01. Alligator

Deflated size 2 Person: 100"/254 cm - Deflated size 3 Person: 119"/302 cm - Deflated size 4 Person: 135"/343 cm
 • Full nylon cover/Heavy-duty PVC • Comfortable neoprene pads • EVA foam filled webbing handles • 3 air chambers • Foam strips in nylon cover for inner bladder protection/3 water drains added for less stress on nylon seams • Covered "Boston" valves • "Quick connector"
 4 Person: 230209003
 3 Person: 230209002
 2 Person: 230209001

02. Banana Rider

• Proven quality and shape • Heavy density 0.9 mm coated PVC • Thermobonded seams for more strength • 3 air chambers • Nonskid seats • Comfortable handles with vinyl tubing • Complete with foot pump and repair kit
 8 Person (6.30 m): 320210004
 6 Person (5.60 m): 320210003
 5 Person (5.10 m): 320210002
 4 Person (3.90 m): 320210006
 3 Person (3.40 m): 320210005

03.



03. Multi Rider

• Long nose for more stability • Reinforced sidefloats • Heavy-duty PVC-coated material • "Thermobonded" seams • 3 air chambers with "Halkey Roberts" valves • Minimal resistance design • Super stable • Repair kit included • Includes foot pump
 8 Person (6.60 m): 320207005
 6 Person (5.40 m): 320207004
 5 Person (4.80 m): 320207003





01.



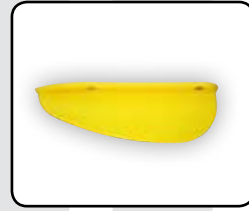
05.



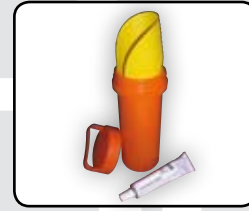
09.



13.



17.



21.



02.



06.



10.



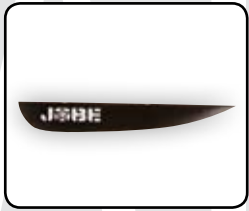
14.



18.



22.



03.



07.



11.



15.



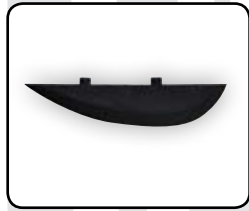
19.



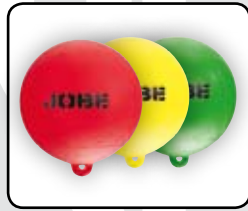
23.



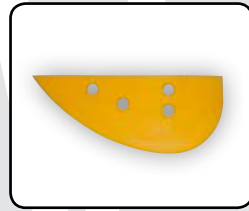
04.



08.



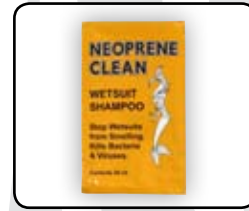
12.



16.



20.



24.

WAKEBOARDS

01. Dorsal Fin PC (PolyCarbonate)

1.0": 380810001

02. Dorsal Fin Plastic Universal

Size: 1.3"/1.7"
380803004

03. Dorsal Fin Fiber glass with screw

Size: 0.8"/1.1"
0.8": 380207001 - 1.1": 380207002

04. Dorsal Fin Aluminum

Size Silver: 0.8"/1.3" - Size Black: 0.8"/1.0"
Silver: 0.8": 380704003 - 1.3": 380703007
Black: 0.8": 380809003 - 1.0": 380809004

05. Screw Fin Jobe Boards (4pcs)

380805002

06. Wakeboard Repair Kit

• Great repair kit to keep close to your wakeboard • All you need to repair your board is the sun and some tape
420005004

07. Mini Travel Kit

Includes:
• 1/2oz tube Solarez fiberfill putty • 1/2 oz tube microlite putty •
60/240 grit sand pad • Spreader • Acetone prep-pad in a crush-
proof watertight plastic capsule
420005005

WAKESKATE

08. Wakeskate Fin (Union/Exceed)

380812001

SLALOM

09. Cheater Kit/Spoiler

The wing is designed to help slow the ski down as you approach the turns • The more angle you set on the wing, the faster your ski will decelerate into the turns • The tolerances for the wing angle should be kept between 6-10 degrees
330800009

10. Adjustable Competition Slalom Fin

Adjustable fin-block and 6-hole round blade • Hex locking bolts and set screws • Fits on all Jobe skis and on most of the other brands
330700011

11. Standard Slalom Fin

380707001

12. Slalom Buoy

Color: Red, Yellow, Green
• Competition size: 9" diameter
Red: 360403001 - Yellow: 360203001 - Green: 361103001

COMBO SKIS

13. Squeeze Heel

Adult: 350800006
Junior: 350801008
Trainer: 350801010

14. Front Toe

Adult: 350800005
Junior: 350801007
Trainer: 350801009

15. Slalom Toe

Adult: 350800001
Junior: 350804001

16. Combo Fin

350803002

17. Fin Trainer High incl. Screws

350210001

18. Fin Trainer Low incl. Screws

350804002

TOWABLES

19. "Boston" Valve

410800024

20. Compressor Adaptor

• Fits "Boston" valve
410200023

21. Multi Rider Repair Kit

320005002

22. Towable Repair Kit

410010001

DIVERSE

23. Multi Purpose Repair Kit

Permanent flexible waterproof repairs for wetsuits, air mattresses, bags, shoes and other products made out of neoprene, nylon, rubber, leather, PVC, PU and most other plastics
420005001

WETSUITS

24. Wetsuit Shampoo

420008002



EXTRAS EXTRAS

SIZECHARTS & SPECIFICATIONS

004-009 LADIES WETSUITS

	EURO SIZE	HEIGHT FT	HEIGHT CM	CHEST INCH	CHEST CM	WAIST INCH	WAIST CM
XS	34	5'-5.2"	152-157	27"-31.5"	69-80	22.5" - 26.5"	57-67
S	36	5'2"-5'3"	157-160	29"-32.5"	74-83	24" - 27.5"	61-70
M	38	5'3"-5'4"	160-165	32"-34.5"	81-88	25" - 29"	64-74
L	40	5'4"-5'5"	165-168	32.5"-35.5"	83-90	27" - 30.5"	68-77
XL	42	5'5"-5'7"	168-173	33"-36.5"	84-93	28.5" - 31"	72-79
XXL	44	5'7"-5'8"	173-178	35.5"-39.5"	90-100	29.5" - 33.5"	75-85

010-016 MEN WETSUITS

	EURO SIZE	HEIGHT FT	HEIGHT CM	CHEST INCH	CHEST CM	WAIST INCH	WAIST CM
XS	46	5'4"-5'6"	163-168	34" - 37"	86-94	26" - 30"	66-76
S	48	5'6"-5'8"	168-173	35" - 38"	88-97	27" - 31"	69-79
M	50	5'8"-5'9"	173-175	36.5" - 39.5"	93-100	29" - 33"	74-84
L	52	5'9"-6'1"	175-180	38" - 41"	97-104	30" - 34"	76-86
XL	54	6'1"-6'3"	180-183	38.5" - 41.5"	98-105	31" - 35"	79-89
XXL	56	6'3"-6'4"	183-185	41" - 43.5"	104-110	33" - 37"	84-94
XXXL	58	6'4"-6'5"	185-187	43" - 44.5"	109-115	35" - 39"	86-96

020-025 VESTS MEN USCG-APPROVED

		XS (UNI-INFANT)	S (S/M)	M	L (L/XL)	XL	XXL (2XL/3XL)	XXXL
INTENSE VEST	CHEST	35"-37.5"	37.5"-40"	40"-42.5"	42.5"-45"	45"-47.5"	47.5"-50"	
	WEIGHT	>90LBS	>90LBS	>90LBS	>90LBS	>90LBS	>90LBS	
VIPER VEST	CHEST	33"-36"	37"-40"	41"-44"	45"-48"	49"-52"	53"-56"	
	WEIGHT	>90LBS	>90LBS	>90LBS	>90LBS	>90LBS	>90LBS	
COMBAT VEST	CHEST	33"-36"	37"-40"	41"-44"	45"-48"	49"-52"	53"-56"	
	WEIGHT	>90LBS	>90LBS	>90LBS	>90LBS	>90LBS	>90LBS	
4 BUCKLE PRO	CHEST	29"-32"	33"-36"	37"-40"	41"-44"	45"-48"	49"-52"	53"-56"
	WEIGHT	>90LBS	>90LBS	>90LBS	>90LBS	>90LBS	>90LBS	>90LBS
OUTBURST	CHEST	33"-40"	33"-40"	41"-48"	41"-48"	49"-56"	49"-56"	
	WEIGHT	>90LBS	>90LBS	>90LBS	>90LBS	>90LBS	>90LBS	
UNIVERSAL	CHEST	30"-52"						
	WEIGHT	>90LBS						
CODE	CHEST	30"-33"	34"-36"	37"-39"	40"-42"	43"-45"	>90LBS	
	WEIGHT	>90LBS	>90LBS	>90LBS	>90LBS	>90LBS	>90LBS	
INDY	CHEST	33"-36"	36"-39"	39"-42"	42"-45"	45"-48"	>90LBS	
	WEIGHT	>90LBS	>90LBS	>90LBS	>90LBS	>90LBS	>90LBS	
ESSENCE	CHEST	30"-33"	34"-36"	37"-39"	40"-42"	43"-45"	>90LBS	
	WEIGHT	>90LBS	>90LBS	>90LBS	>90LBS	>90LBS	>90LBS	
MICRON	CHEST	25" - 29"						
	WEIGHT	50 - 90LBS						
TRACE	CHEST	-						
	WEIGHT	50 - 90LBS						
NEXUS	CHEST	-						
	WEIGHT	0 - 30LBS						

020-025 VESTS MEN CE-APPROVED

		XS	S (S/M)	M	L (L/XL)	XL	XXL	XXXL
INTENSE VEST	CHEST	88-95 CM	95-101 CM	101-107 CM	107-114 CM	114-120 CM	120-127 CM	
	WEIGHT	40-60 KG	50-70 KG	60-80 KG	>70 KG	>70 KG	>70 KG	
VIPER VEST	CHEST	88-95 CM	95-101 CM	101-107 CM	107-114 CM	114-120 CM	120-127 CM	
	WEIGHT	40-60 KG	50-70 KG	60-80 KG	>70 KG	>70 KG	>70 KG	
TREASURE VEST	CHEST	75-90 CM	85-100 CM	95-100 CM	105-120 CM	115-130 CM	120-135 CM	
	WEIGHT	40-50 KG	50-70 KG	>70 KG	>70 KG	>70 KG	>70 KG	
DLX VEST	CHEST	88-95 CM	95-101 CM	101-107 CM	107-114 CM	114-120 CM	120-127 CM	
	WEIGHT	40-60 KG	50-70 KG	60-80 KG	>70 KG	>70 KG	>70 KG	
FREESTYLE VEST	CHEST	80-100 CM			100-120 CM			
	WEIGHT	50-70 KG			>70 KG			
TRIGGER VEST	CHEST	70-80 CM	80-90 CM	90-100 CM	100-110 CM	110-120 CM	120-130 CM	130-140 CM
	WEIGHT	40-50 KG	50-60 KG	>60 KG	>70 KG	>70 KG	>70 KG	>70 KG
COMBAT VEST	CHEST		80-90 CM	90-100 CM	100-110 CM	110-120 CM	120-130 CM	130-140 CM
	WEIGHT		50-60 KG	>60 KG	>70 KG	>70 KG	>70 KG	>70 KG

026 - 027 JOB IMPACT SHIELDS

		XXS	XS	S	M	L	XL	XXL
MEN IMPACT SHIELD	CHEST	82-86 CM	87-91 CM	92-96 CM	97-101 CM	102-106 CM	107-111 CM	112-116 CM
LADIES IMPACT SHIELD	CHEST		80-84 CM	85-89 CM	90-94 CM	95-99 CM	100-104 CM	

028-029 VESTS LADIES CE-APPROVED

		XS	S	M	L	XL	XXL
INDY VEST	CHEST	76-83 CM	83-91 CM	91-99 CM	99-106 CM	106-114 CM	
	WEIGHT	30-50 KG	40-60 KG	50-70 KG	60-80 KG	>70 KG	
DELIGHT VEST	CHEST	65-75 CM	70-85 CM	75-90 CM	85-100 CM	95-100 CM	
	WEIGHT	30-40 KG	30-40 KG	40-50 KG	50-70 KG	>70 KG	
CODE VEST	CHEST	69-76 CM	76-83 CM	83-91 CM	91-99 CM	99-106 CM	107-114 CM
	WEIGHT	30-40 KG	40-60 KG	40-60 KG	50-70 KG	>60 KG	>70 KG
ESSENCE VEST	CHEST	69-76 CM	76-83 CM	83-91 CM	91-99 CM	99-106 CM	106-114 CM
	WEIGHT	30-40 KG	40-60 KG	40-60 KG	50-70 KG	>60 KG	>70 KG
PURE VEST	CHEST	69-76 CM	76-83 CM	83-91 CM	91-99 CM	99-106 CM	106-114 CM
	WEIGHT	30-40 KG	40-60 KG	40-60 KG	50-70 KG	>60 KG	>70 KG

030-031 JOB VESTS UNISEX CE-APPROVED

		S/M	L/XL	XXL/XXXL	4XL/5XL		
OUTBURST VEST	CHEST	80-100 CM	100-110 CM	110-130 CM	>130 CM		
	WEIGHT	50-70 KG	>70 KG	>70 KG	>70 KG		
UNIVERSAL VEST		UNIVERSAL					
	CHEST	75-130 CM					
4 BUCKLE PRO VEST	CHEST	70-80 CM	80-90 CM	90-100 CM	100-110 CM	110-120 CM	120+ CM
	WEIGHT	40-50 KG	50-60 KG	60-70 KG	>70 KG	>70 KG	>70 KG
COMFORT BOATING VEST	CHEST	65-77 cm	70-90 CM	80-95 CM	90-115 CM	>115 CM	
	WEIGHT	30-40 KG	40-60 KG	60-70 KG	70-90 KG	>90 KG	
	NEWTON	50 N	70 N	80 N	100 N	100 N	

PET BOUAYNCY JACKET	WEIGHT	<7 KG	7-14 KG	14-27 KG
---------------------	--------	-------	---------	----------

036-037 PWC VESTS CE-APPROVED

		S (S/M)	M	L (L/XL)	XL	XXL (XXL/XXXL)	XXXL
DLX VEST	CHEST	88-95 CM	95-101 CM	101-107 CM	107-114 CM	114-120 CM	120-127 CM
	WEIGHT	40-60 KG	50-70 KG	60-80 KG	>70 KG	>70 KG	>70 KG
SECURE ENTRY VEST	CHEST	50-70 CM		100-110 CM		>120 CM	
	WEIGHT	50-70 KG		>70 KG		>70 KG	

038-039 NEOPRENE SHOE/BOOT SIZES

	4	5	6	7	8	9	10	11	12
EURO	36	37	38	39-40	41-42	43	44	45	46
US	4 1/2	5	6	7-7 1/2	8-8 1/2	9	10 1/2	11 1/2	12
UK	4	4 1/2	5 1/2	6 1/2-7	7 1/2-8	8 1/2	10	11	12

038-039 NEO SOCK

	S	M	L
EURO	<40	<43	<46

040-042 YOUTH WETSUITS

	XXXS	XXS	XS	S	M	L	XL	XXL	XXXL
LENGTH (CM)	92	98-104	110-116	122-128	134-140	146	152-158	164	170
AGE	1 1/2 - 2	2-4	4-6	6-8	8-10	10-12	12-14	14	15

042 NEOPRENE SHOES YOUTH

	XS	S	M	L	XL
	25-26	27-28	29-30	31-32	33-34

043 YOUTH BOARDSHORTS

LENGTH	CM	AGE
S	122-128	6-8
M	134-140	8-10
L	146	10-12
XL	152-158	12-14
XXL	164	14

043 YOUTH RASH GUARDS

LENGTH CM	AGE
4XS-3XS	1-2
2XS-XS	3-5
S-M	6-10
L-XL	10-14

All sizes and measurements are for reference only

044-045 YOUTH VESTS

		UNL	INFANT	CHILD	3XS-2XS	XS-S	M-L	S-M	L-XL	XXL
MICRON VEST	CHEST WEIGHT	63-73 CM 30-40 KG								
REBEL SQUARE JACKET	CHEST						58-63 CM	63-68 CM	68-79 CM	
NEXUS SAFETY VEST	WEIGHT	<20	20-30 KG							
COMFORT BOATING VEST	CHEST WEIGHT NEWTON			<57 CM 10-15 KG 30 N	<65 CM 10-20 KG 40 N	60-70 CM 20-30 KG 40N				
JOY/SCRIBBLE VEST	CHEST WEIGHT	63-73 CM 30-40,5 KG								
TRACE/STARTER VEST	CHEST WEIGHT	60-70 CM 30-40 KG								

046-047 RASH GUARDS MEN

	EURO SIZE	HEIGHT INCH	HEIGHT CM	CHEST INCH	CHEST CM	WAIST INCH	WAIST CM
XS	46	5'4"-5'6"	163-168	34"-37"	86-94	26"-30"	66-76
S	48	5'6"-5'8"	168-173	35"-38"	88-97	27"-31"	69-79
M	50	5'8"-5'9"	173-175	36 1/2"-39 1/2"	93-100	29"-33"	74-84
L	52	5'9"-6'1"	175-180	38"-41"	97-104	30"-34"	76-86
XL	54	6'1"-6'3"	180-183	38 1/2"-41 1/2"	98-105	31"-35"	79-89
XXL	56	6'3"-6'4"	183-185	41"-43 1/2"	104-110	33"-37"	84-94
XXXL	58	6'4"-6'5"	185-187	43"-44 1/2"	109-115	35"-39"	86-96

048-049 RASH GUARDS LADIES

	EURO SIZE	HEIGHT INCH	HEIGHT CM	CHEST INCH	CHEST CM	WAIST INCH	WAIST CM
XS	34	5"-5'2"	152-57	27"-31 1/2"	69-80	22 1/2"-26 1/2"	57-67
S	36	5'2"-5'3"	157-160	29"-32 1/2"	74-83	24"-27 1/2"	61-70
M	38	5'3"-5'5"	160-165	32"-34 1/2"	81-88	25"-29"	64-74
L	40	5'5"-5'6"	165-168	32 1/2"-35 1/2"	83-90	27"-30 1/2"	68-77
XL	42	5'6"-5'8"	168-173	33"-36 1/2"	84-93	28 1/2"-31	72-79

062-075 WAKEBOARDS

	AUSTIN	AUSTIN	AUSTIN	CLICK	CLICK	GUERRILLA	GUERRILLA	BRIGADE	BRIGADE
LENGTH	133	137	141	139	143	137	142	134	139
INSERT SETUP	6"	6"	6"	6"	6"	6"	6"	6"	6"
TIP/TAIL WIDTH	26,5	27,25	28	30	31,7	32,5	33,5	31,12	31,75
CENTER WIDTH	41	41,8	42,5	42,2	43,4	45	45,5	42,42	42,8
ROCKER	Hybrid Rocker	Hybrid Rocker	Hybrid Rocker	Continuous	Continuous	Subtle 3-stage	Subtle 3-stage	Hybrid	Hybrid
BOARD LEVEL	I/A*	I/A*	I/A*	I/A*	I/A*	Advanced	Advanced	Advanced	Advanced
RIDER WEIGHT	45 - 76	64 - 94	75 and up	70-100	80 AND UP	63-95	75 and up	up to 82	63 and up

	REGION	REGION	VANITY	VANITY	VANITY	REPUBLIC	REPUBLIC	REPUBLIC
LENGTH	139	143	131	136	141	127	135	140
INSERT SETUP	6"	6"	6"	6"	6"	6"	6"	6"
TIP/TAIL WIDTH	27,5	28,3	24,8	25,4	25,9	23,4	27,4	27,7
CENTER WIDTH	43,7	44,3	42,5	42,2	43,4	45	45,5	42,42
ROCKER	3-Stage	3-Stage	A/C*	A/C*	A/C*	3-stage	3-stage	3-stage
BOARD LEVEL	I/A*	I/A*	ALL	ALL	ALL	Beg.-Adv.*	ALL	ALL
RIDER WEIGHT	63-95	75 and up	31-67	45-81	63-103	24-62	45-77	70 and up

	ARTIST	ARTIST	ARTIST	MAX	MAX	ISIS	ISIS	PEARL	PEARL
LENGTH	132	137	142	131	136	132	137	127	135
INSERT SETUP	6"	6"	6"	6"	6"	6"	6"	6"	6"
TIP/TAIL WIDTH	26,8	26,8	27	24,8	25,4	26,8	43,1	23,4	27,4
CENTER WIDTH	43,1	43,6	43,9	39,9	40,4	43,1	43,6	40,1	42,7
ROCKER	3-Stage	3-Stage	3-Stage	A/C*	A/C*	3-Stage	3-Stage	3-Stage	3-Stage
BOARD LEVEL	I/A*	I/A*	I/A*	ALL	ALL	I/A*	I/A*	ALL	ALL
RIDER WEIGHT	31-67	45 - 81	63 and up	31-67	45-81	31-67	45-81	24-62	45-77

* I/A = Intermediate / Advanced, Beg.-Adv. = Beginner / Advanced
A/C = Aggressive / Continuous

All sizes and measurements are for reference only

080-085 HIGH END WAKEBOARD BINDINGS

AUSTIN SERIES										
US	4.5-5	6	7-7.5	8-8.5	9	10	11-12			
EU	36-37	38	39-40	41-42	43	44	45-46			
CLICK										
US	4.5-5	6	7-7.5	8-8.5	9	10	11-12			
EU	36-37	38	39-40	41-42	43	44	45-46			
BRIGADE										
US	4.5-5	6	7-7.5	8-8.5	9	10	11-12			
EU	36-37	38	39-40	41-42	43	44	45-46			
DELUXE										
US	4.5-5	6	7-7.5	8-8.5	9	10	11-12			
EU	36-37	38	39-40	41-42	43	44	45-46			

076-086 WAKEBOARD BINDINGS

STRIKE			
MINI	STANDARD	XL	
US	6.5-11.5	9-13	
EU	38.5-45	43-48	
STATIC			
MINI	STANDARD	XL	
US	3-7	7-11	9-13
EU	34-40	39-45	42.5-48
MAZE			
MINI	STANDARD		
US	7-11		
EU	39-45		
JUNIOR			
MINI	ACCESS WAKE		
US	4.5-7.5	3-6	
EU	36-40	34-38	

099 WAKESKI RIDER WEIGHT

	144	153
WEIGHT (KG) WAKE	40-70	65-100
WEIGHT (KG) CABLE	40-80	70-100

090-091 COMBO SKIS

	LENGTH	WEIGHT	BINDING SIZE (EU)
HEMI	59"	Up to 59 KG	35-40
	62"	36-73 KG	37-45
	65"	50 KG and up	37-45
TRADITIONAL	46"	up to 33 KG	
	59"	up to 54 KG	35-40
	67"	50 KG and up	37-45

094 SLALOM SKIS

	ROGUE	ENCORE	DEFIANT	BARON	FLORA	HAMMER	ASSAULT JR	HEMI	PROGRESS
PRO	X	X	X						
ADVANCED		X	X	X	X		X		
INTERMEDIATE				X	X	X	X	X	X
BEGINNER				X	X	X	X	X	X

095-098 TRADITIONAL SLALOM SKIS JOBE

	63.5	65"	66"	67"	68"	69"
28-30 MPH / 46-49 KMH	30-45 KG	45-54 KG	50-60 KG	54-64 KG	59-68 KG	64-73 KG
30-32 MPH / 40-52 KMH	40-55 KG	54-64 KG	60-70 KG	64-73 KG	68-77 KG	73-82 KG
32-34 MPH / 52-55 KMH	50-60 KG	64-73 KG	70-80 KG	73-82 KG	77-86 KG	82-91 KG
34-36 MPH / 55-58 KMH	50-70 KG	73-82 KG	75-85 KG	82-91 KG	86-95 KG	91-100 KG

098 WIDE TRACK SLALOM SKIS

	65"	67"	68.5"	69"
21-23 MPH / 34-37 KMH	32-52 KG	36-50 KG	50-65 KG	54-68 KG
23-25 MPH / 37-40 KMH	46-60 KG	50-64 KG	65-80 KG	68-82 KG
25-27 MPH / 40-43 KMH	60-73 KG	64-77 KG	80-95 KG	82-95 KG
27-28,5 MPH / 43-46 KMH	72-84 KG	77-91 KG	95-105 KG	95-109 KG
28.5-30,5 MPH / 46-49 KMH	84-95 KG	91-104 KG	100 KG+	100 KG+

039 / 108 HELMETS

LOGO SERIES		AUSTIN, CLICK		STRIPE, X		BARRACUDA	
HUSTLER		ACHELOS, PATROL		S/M	54-58 CM	M	57-58 CM
S	53-54 CM	S	53-54 CM	L/XL	58-62 CM	L	59-60 CM
M	55-56 CM	M	55-56 CM			XL	61-62 CM
L	57-58 CM	L	57-58 CM				
XL	59-60 CM	XL	59-60 CM				

MAX			
US (FEMALE)	6-7	8	8.5-9.5
EU (FEMALE)	36-37	38	39-41
VANITY			
US	5-8	8-11	11-14
EU	37-41	41-45	45-48.5
REPUBLIC			
US	5-8	8-11	11-14
EU	37-41	41-45	45-48.5
REPUBLIC JR			
US	4.5-7.5		
EU	36-40		
PEARL			
US (FEMALE)	5-9	8-11	
EU (FEMALE)	35-38.5	38.5-43	

087 WAKESKATES

	SAVAGE 43"	EXCEED 41"	EXCEED 43"	UNION 43"
LENGTH (CM)	109	104	109	109
TIP / TAIL WIDTH (CM)	26	29.5	29.5	30.5
CENTER WIDTH (CM)	39,5	37,8	37,8	40,5
WEIGHT (KG)	3,3	4,04	4,44	5
ROCKER	Continuous	Continuous	Continuous	Continuous

088-089 KNEEBOARDS

	PROPHECY	TEMPEST	CHILI PEPPER	SHOCK	JUSTICE
LENGTH (CM)	138	138	135	132	135
WIDTH (CM)	51	51	50	51,56	51,56
WEIGHT (KG)	8,75	8,75	8,75	7,26	6,8
STRAP	DOUBLE	SINGLE	SINGLE	DOUBLE	SINGLE
FINIS	INMOLDED	INMOLDED	NONE	NONE	NONE
HYDROHOOK	NO	NO	NO	YES	YES

090-093 COMBO SKI BINDINGS

	TRAINER	JUNIOR	ADULT
US	>4.5	3.5-7	5.5-11.5
EU	>36	35-40	37-45

100-101 SLALOM SKI BINDINGS

ROGUE						
US	8-8,5	9	10			
EU	41-42	43	44			
LIMIT						
XS	S	M	L	XL	XXL	
EU	33-35	36-40	41-43	44-45	46-47	47-48

FOCUS			STANDARD	XL
EU	38,5-42			43-48
COMFORT				
US	5-8		8-11	
EU	37-41		41-45	45-48,5
CAPRI				
US	5-8		8-11	
EU	35-38,5		38,5-43	

109 KNEEBRACE

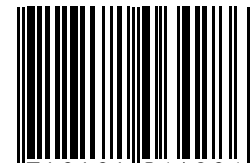
S		40 CM-44 CM	
M			43 CM-47 CM
L			45 CM-49 CM
XL			48 CM-52 CM



2012



JOBE
.....
JOBESPORTS.COM



8 718181 064286